

EMC Filters for AC Power Line

Inlet-socket Type ZUB.U-11, ZUB.D-11 Series

Conformity to RoHS Directive

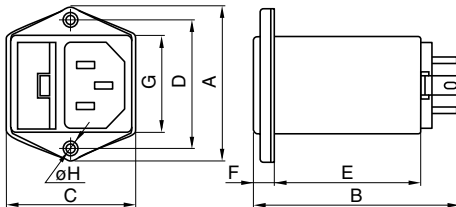
FEATURES

- Either single fuse filters(U type) or double fuse filters(D type).
- Internal fuse simplifies maintenance(Without spare fuse).
- Current leakage is maintained at less than 0.5mA.
- Uses Faston® #250 output terminals, simplifying handling and maintenance, and permitting soldering.
- It is a product conforming to RoHS directive.

APPLICATIONS

Computer terminals, various types of office automation equipment, digital devices(ECRs, etc.), measurement equipment, medical equipment, etc.

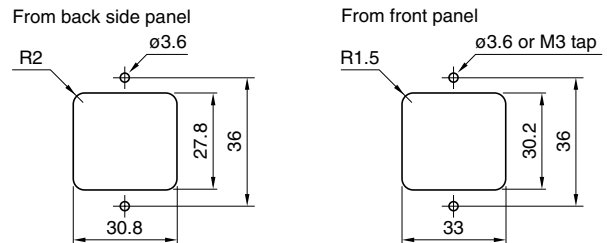
SHAPES AND DIMENSIONS



SAFETY STANDARDS

Part No.	Standard and standard No.		
	U.S.A.	Canada	Europe
	UL	CSA	NEMKO
	UL1283	CSA C22.2 No.8	EN60939
ZUB2203U-11	E62388	LR76849C	P08209030
ZUB2206U-11	E62388	LR76849C	P08209030
ZUB2203D-11	E62388	LR76849C	P08209030
ZUB2206D-11	E62388	LR76849C	P08209030

Typical dimensions for installation



- Tighten the panel mounting M3 dia. bolt with the torque under 5.88X10⁻¹N•m.

Series	Dimensions in mm							
	A	B	C	D	E	F	G	øH
ZUB-U-22	44	59	37	36	41	6	27	3.5
ZUB-D-22	44	68	37	36	41	15	27	3.5

- Case:metal, input terminal:inlet-socket(EN60320), output terminal: Faston® #250(t:0.8mm)



- Faston® is a registered trademark of Tyco Electronics AMP Corp. Incorporated.

- Conformity to RoHS Directive: This means that, in conformity with EU Directive 2002/95/EC, lead, cadmium, mercury, hexavalent chromium, and specific bromine-based flame retardants, PBB and PBDE, have not been used, except for exempted applications.

- All specifications are subject to change without notice.

ELECTRICAL CHARACTERISTICS

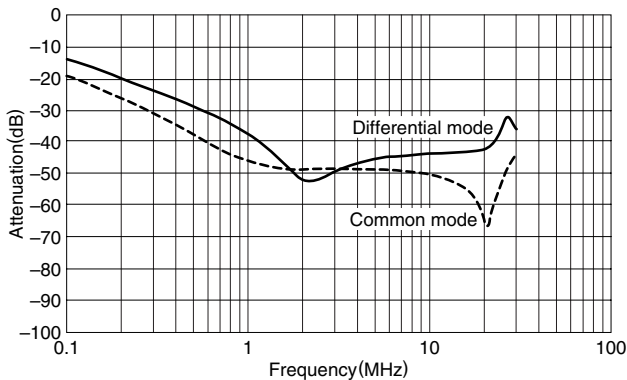
Part No.	ZUB2203U-11	ZUB2206U-11	ZUB2210U-11
Rated voltage Eac (V)	250	250	250
Rated current (A)	3	6	10
Test voltage Eac (V) [Between terminal and ground terminal]	1500	1500	1500
Insulation resistance (MΩ) [DC.500V, 1min/between terminal and ground terminal]	100min.	100min.	100min.
Leakage current (mA) [250V • 60Hz]	0.5max.	0.5max.	0.5max.
DC resistance (mΩ)	150max.	100max.	100max.
Operating temperature range (°C)[Including self-temperature rise]	-25 to +85	-25 to +85	-25 to +85
With derating over(°C)	55	55	55
Temperature rise (°C)	30max.	30max.	30max.
Attenuation frequency range	Differential mode	1 to 20[20dB]	2 to 20[20dB]
(MHz) [+5 to +35° C]	Common mode	1 to 30[30dB]	2 to 30[20dB]
Weight (g)	55	55	55

Part No.	ZUB2203D-11	ZUB2206D-11	ZUB2210D-11
Rated voltage Eac (V)	250	250	250
Rated current (A)	3	6	10
Test voltage Eac (V) [Between terminal and ground terminal]	1500	1500	1500
Insulation resistance (MΩ) [DC.500V, 1min/between terminal and ground terminal]	100min.	100min.	100min.
Leakage current (mA) [250V • 60Hz]	0.5max.	0.5max.	0.5max.
DC resistance (mΩ)	150max.	100max.	100max.
Operating temperature range (°C)[Including self-temperature rise]	-25 to +85	-25 to +85	-25 to +85
With derating over(°C)	55	55	55
Temperature rise (°C)	30max.	30max.	30max.
Attenuation frequency range	Differential mode	2 to 30[20dB]	1 to 20[20dB]
(MHz) [+5 to +35° C]	Common mode	1 to 30[30dB]	2 to 30[20dB]
Weight (g)	60	60	60

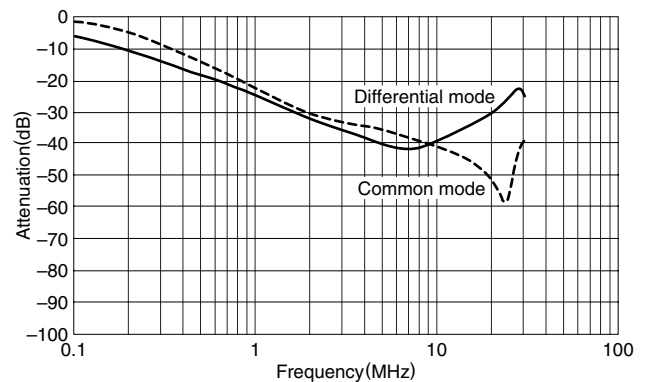
TYPICAL ELECTRICAL CHARACTERISTICS

ATTENUATION vs. FREQUENCY CHARACTERISTICS

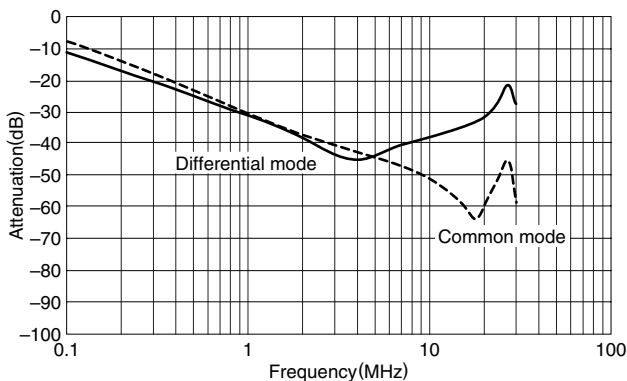
ZUB2203U-11/D-11



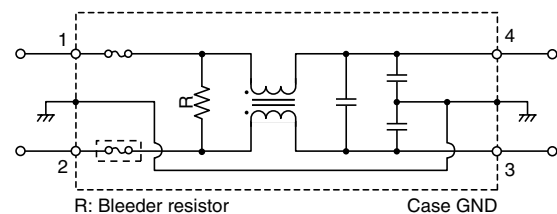
ZUB2210U-11/D-11



ZUB2206U-11/D-11



CIRCUIT DIAGRAM



- R: Bleeder resistor
Case GND
- The U type lacks a fuse within the circuit region indicated by the dashed line.