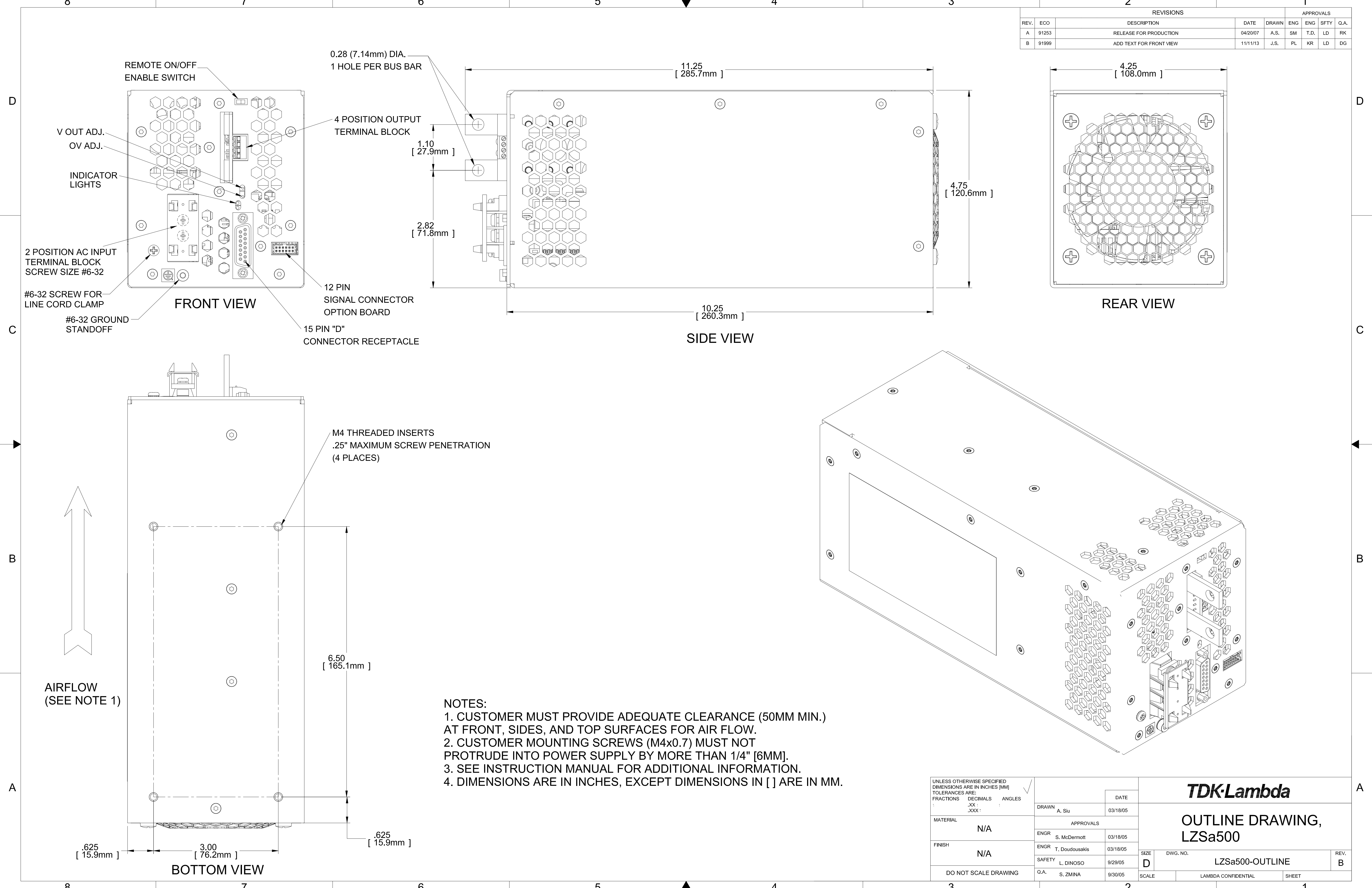


REV. ECO		REVISIONS				APPROVALS			
REV.	ECO	DESCRIPTION	DATE	DRAWN	ENG	ENG	SFTY	Q.A.	
A	91253	RELEASE FOR PRODUCTION	04/20/07	A.S.	SM	T.D.	LD	RK	
B	91999	ADD TEXT FOR FRONT VIEW	11/11/13	J.S.	PL	KR	LD	DG	



- NOTES:**
1. CUSTOMER MUST PROVIDE ADEQUATE CLEARANCE (50MM MIN.) AT FRONT, SIDES, AND TOP SURFACES FOR AIR FLOW.
 2. CUSTOMER MOUNTING SCREWS (M4x0.7) MUST NOT PROTRUDE INTO POWER SUPPLY BY MORE THAN 1/4" [6MM].
 3. SEE INSTRUCTION MANUAL FOR ADDITIONAL INFORMATION.
 4. DIMENSIONS ARE IN INCHES, EXCEPT DIMENSIONS IN [] ARE IN MM.

UNLESS OTHERWISE SPECIFIED DIMENSIONS ARE IN INCHES (MM)		DATE		TDK-Lambda		
TOLERANCES ARE:		03/18/05				
FRACTIONS	DECIMALS	ANGLES		OUTLINE DRAWING, LZSa500		
: .XX	: .XXX	:				
MATERIAL			APPROVALS			
N/A			ENGR S. McDermott			03/18/05
FINISH			ENGR T. Doudousakis	03/18/05	SIZE DWG. NO. REV.	
N/A			SAFETY L. DINOSO	9/29/05		
DO NOT SCALE DRAWING			Q.A. S. ZMINA	9/30/05	D LZSa500-OUTLINE B	
			SCALE	LAMBDA CONFIDENTIAL	SHEET 1	