

## 150-200W Single Output General Purpose Power Supplies

### Features

- ◆ Very low cost
- ◆ Small Size
- ◆ Wide Range AC Input
- ◆ Convection or Fan Cooled
- ◆ Five year warranty
- ◆ 1.6" high (For 1U racking)



### Key Market Segments & Applications



<b>Specifications</b>		Model	LS200 (Enclosed style with internal fan)	LS200/L (U channel style - no internal fan)
AC Input Voltage (300VAC for 5s)	VAC		85 - 264VAC	85 - 264VAC (3)
Input Frequency	Hz			47 - 63Hz
DC Input Voltage	VDC			120 - 373VDC*
Inrush Current (230VAC, cold start)	A			60
Power Factor	-		Meets EN61000-3-2, -3 (Typical PF 0.98/0.95)(1)	
Input Current (115/230VAC)	A			3.5 / 1.7 (typical)
Temperature Coefficient	-			<0.02%/°C (0 - 50°C)
Overcurrent Protection	-		>105% of nominal or peak. Constant current style	
Overvoltage Protection (2)	V		3.3V: 3.8 - 4.45V, 5V: 5.75 - 6.75V, 7.5V: 8.6 - 10.1V, 12V: 15.1 - 17.75V 15V: 17.25 - 20.25V, 24V: 30.25 - 35.5V, 36V: 41.4 - 48.6V, 48V: 60 - 69.6V	
Overtemperature Protection (2)	-			Yes
Hold Up Time (115/230V input)	ms			20ms
Leakage Current (230VAC 60Hz)	mA			<1mA
Remote Sense	-			Yes
Remote On/Off	-			On: 0 - 0.8V; Off: 3 - 12V
LED Indicator	-			Green LED = On
Operating Temperature	°C		Fan or forced air rating: -25 to +70°C. Derate linearly to 60% load from +50 to +70°C	
Storage Temperature	°C			-40 to +85°C
Operating Humidity	-			20 - 90% RH (non condensing)
Storage Humidity	-			10 - 95% RH (non condensing)
Cooling	-		Internal Fan (air exhausts from fan end)	Convection or customer supplied airflow
Withstand Voltage	-		Input to Ground 1.5kVAC, Input to Output 3kVAC, Output to Ground 500VAC for 1 min.	
Isolation Resistance	-		>100M at 25°C & 70%RH, Output to Ground 500VDC	
Vibration (non operating)	-		10 - 55Hz: 19.6m/s <sup>2</sup> constant sweep 1 min X, Y, Z for 1 hour	
Shock	-		< 196.1 m/s <sup>2</sup> (20G)	
Immunity	-		IEC61000-4-2, -3, -4, -5, -6, -8, -11	
Safety Agency Certifications	-		IEC/EN/UL/CSA60950-1, IEC/EN/UL/CSA62368-1 and CE Mark	
Conducted & Radiated EMI	-		EN55011/EN55022-B, FCC--B	
Weight (Typ)	g		700	600
Size (LxWxH)	in		7.8 x 3.9 x 1.61"	
Warranty	yrs		Five Years	

Notes:

- (1) 115 / 230VAC input
- (2) Recycle AC to reset
- (3) (Derate linearly to 65% load from 115VAC to 85VAC)

\*Safety certified for AC input only

## Output Ratings

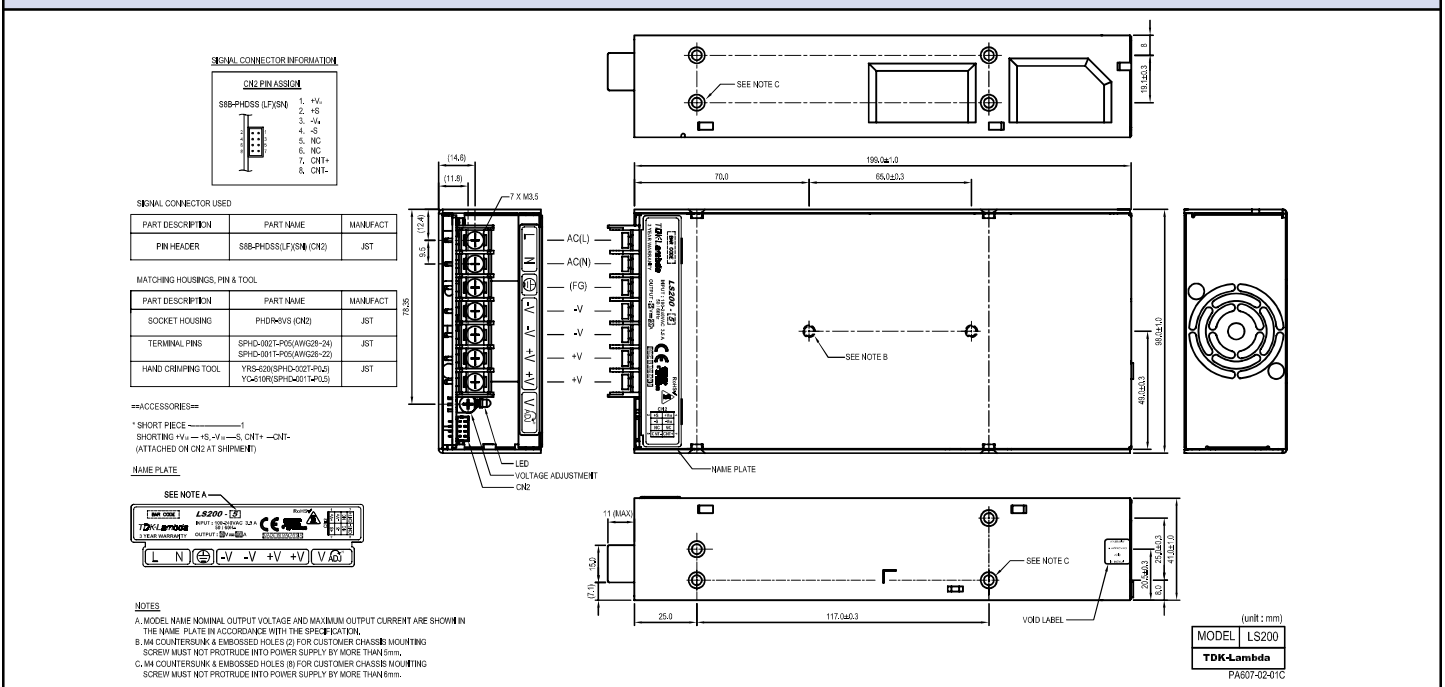
Model	Adjust Range Voltage (V)	Max Current Forced Air(A) <sup>(4)</sup>	Max Current Convect.(A) <sup>(5)</sup>	Peak Current (A)	Load Reg (mV)	Line Reg (mV)	Ripple Noise (mV)	Efficiency (typ) % <sup>(1)</sup>	
LS200-3.3	3.3V	3.0 - 3.6	40.0	N/A	-	40	16	80	67 / 68
LS200-5	5V	4.75 - 5.5	40.0	N/A	-	40	20	80	72 / 75
LS200-7.5	7.5V	6.8 - 8.2	26.7	N/A	-	40	20	80	74 / 77
LS200-12	12V	10.8 - 14.4	16.7	N/A	-	96	48	120	76 / 79
LS200-15	15V	13.5 - 16.5	13.4	N/A	-	120	60	120	80 / 83
LS200-24	24V	22 - 28.8	8.4	N/A	10.4	192	96	120	82 / 84
LS200-36	36V	32 - 40	5.6	N/A	6.9	288	144	150	82 / 85
LS200-48	48V	42 - 57.6	4.2	N/A	-	384	192	200	82 / 85
LS200-3.3/L	3.3V	3.0 - 3.6	40.0	26	-	40	16	80	67 / 68
LS200-5/L	5V	4.75 - 5.5	40.0	26	-	40	20	80	72 / 75
LS200-7.5/L	7.5V	6.8 - 8.2	26.7	17.3	-	40	20	80	74 / 77
LS200-12/L	12V	10.8 - 14.4	16.7	11.6	-	96	48	120	76 / 79
LS200-15/L	15V	13.5 - 16.5	13.4	9.3	-	120	60	120	80 / 83
LS200-24/L	24V	22 - 28.8	8.4	5.8	10.4	192	96	120	82 / 84
LS200-36/L	36V	32 - 40	5.6	3.9	6.9	288	144	150	82 / 85
LS200-48/L	48V	42 - 57.6	4.2	2.9	-	384	192	200	82 / 85

### Notes

(4) With internal fan version LS200-xx or LS200-xx/L version with external airflow.

(5) See Installation manual for derating curve.

## Outline Drawing



## Other Related Products

LS25 - 150	25W to 150W low cost
HWS15 - 1800	15W to 1800W limited lifetime warranty
SWS300 - 1000	300 to 1000W single output

## Options

Suffix	Description
/L	No cover or fan (U channel)
Blank	Cover and fan

For Additional Information, please visit  
<https://product.tdk.com/info/en/products/power/index.html>

