

Attracting Tomorrow

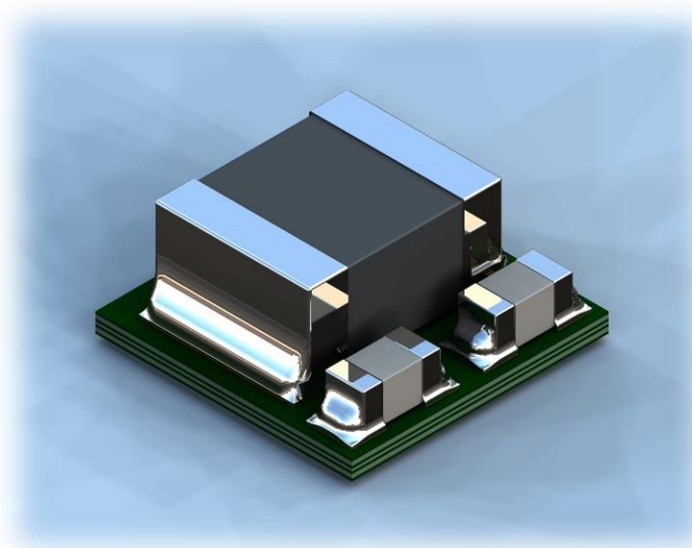


# $\mu$ POL™ Technology

State of the Art DC/DC Converter

## Chip Embedded Power Modules

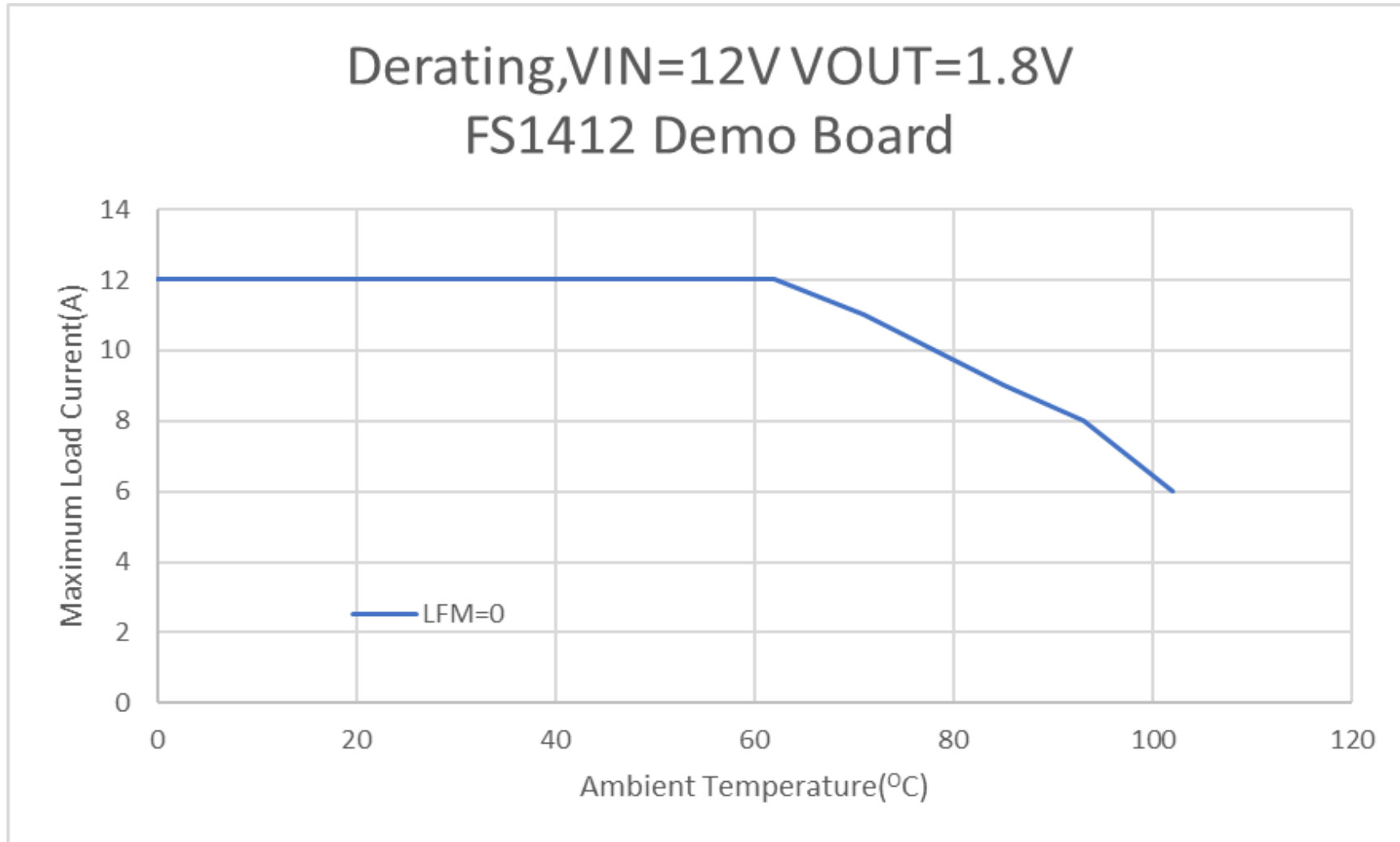
FS1412 Derating Performance



**Faradaysemi**  
A Group Company  
Communication Devices Business Group  
Feb 2021

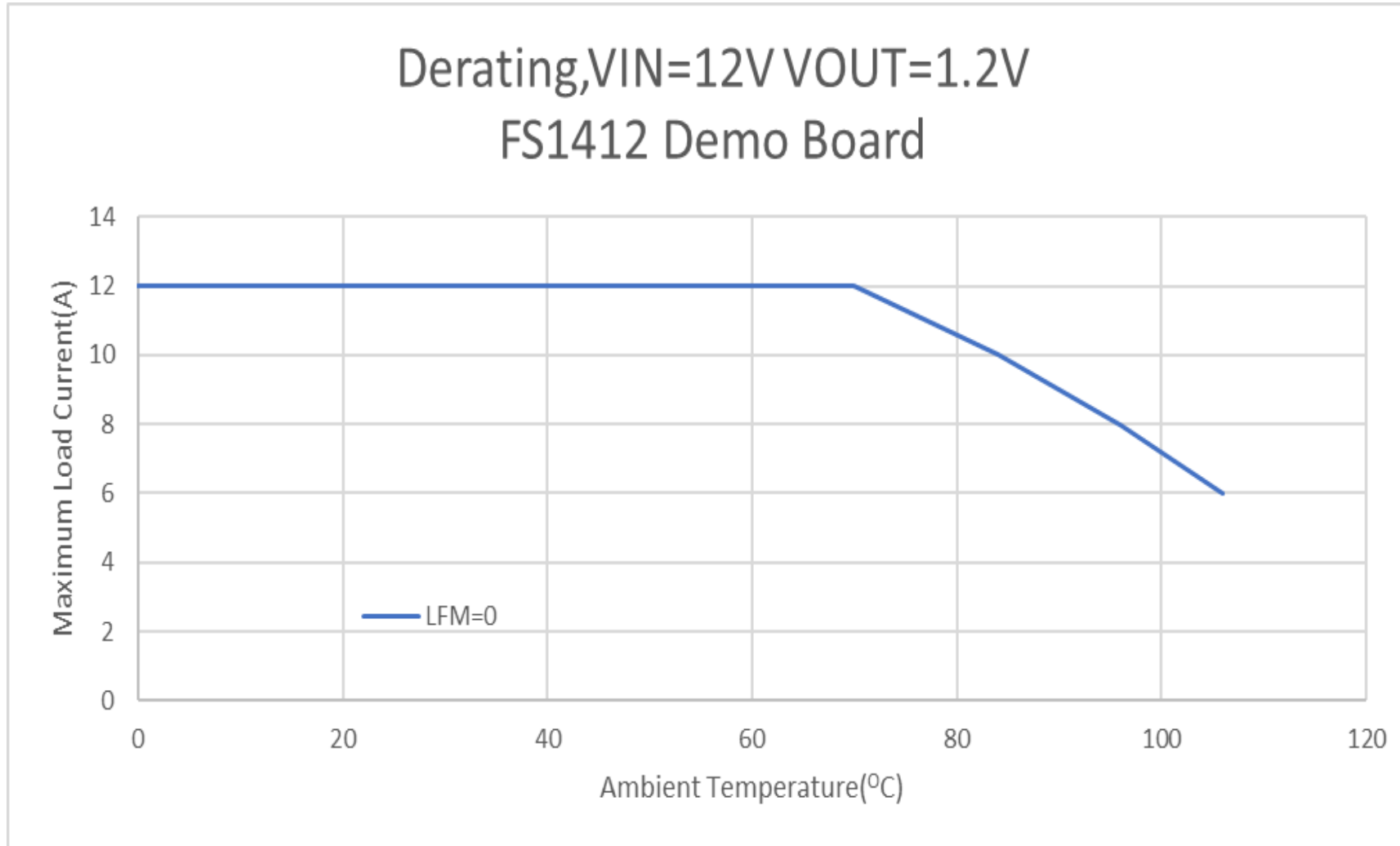


# De-Rating Curves, FS1412



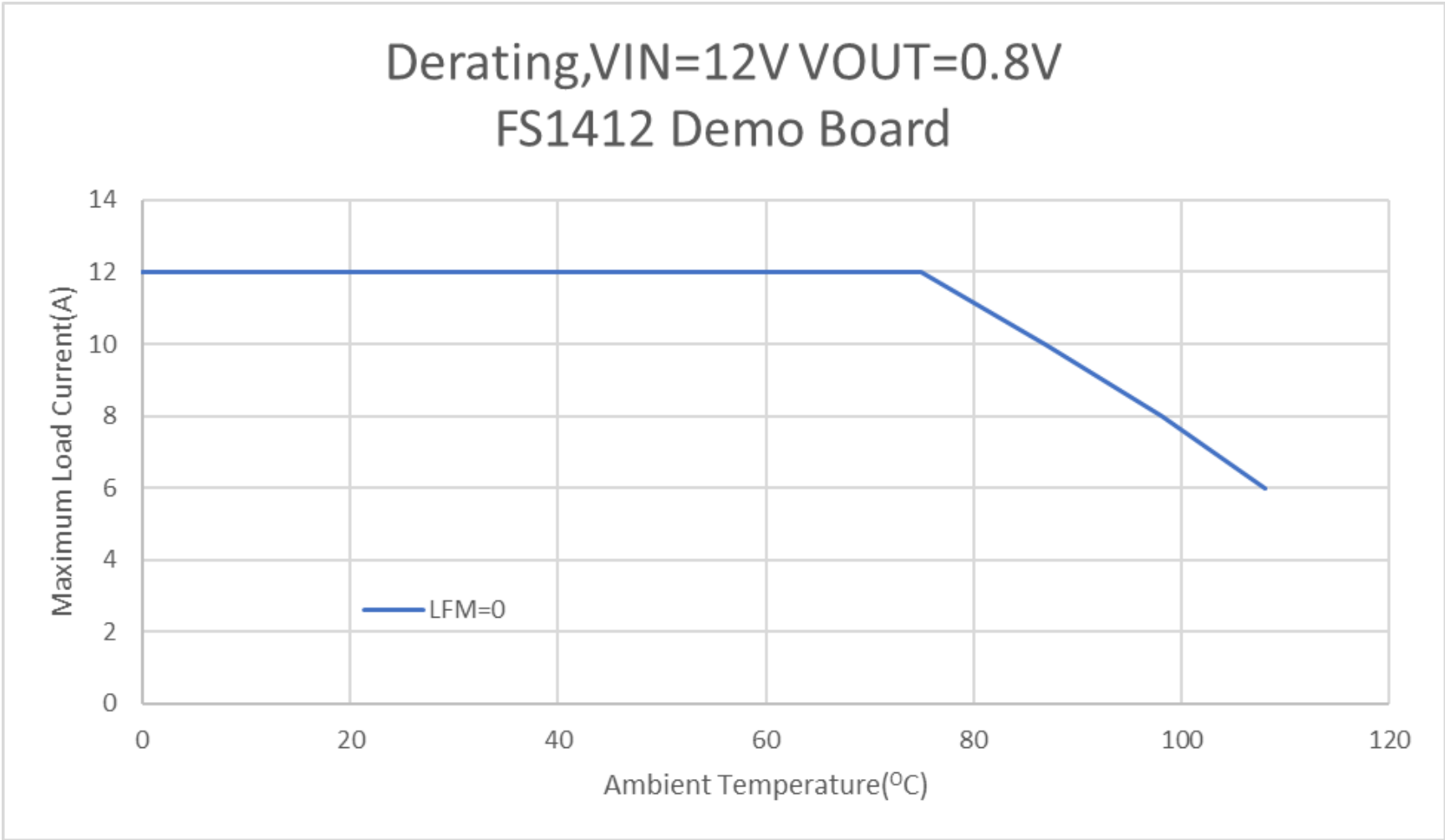
Test Condition: The module temp is monitored and it is kept at or below 125°C while increasing the Ambient temp.

# De-Rating Curves, FS1412



Test Condition: The module temp is monitored and it is kept at or below 125°C while increasing the Ambient temp.

# De-Rating Curves, FS1412



Test Condition: The module temp is monitored and it is kept at or below 125°C while increasing the Ambient temp.

