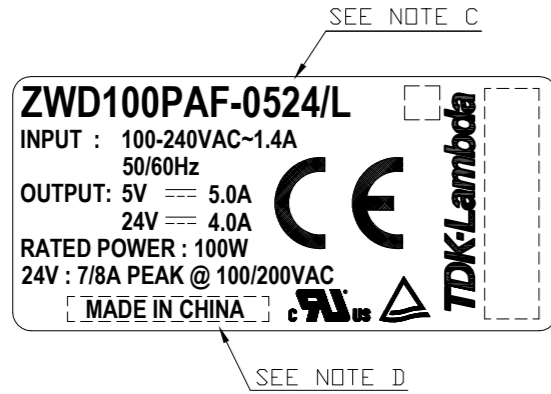
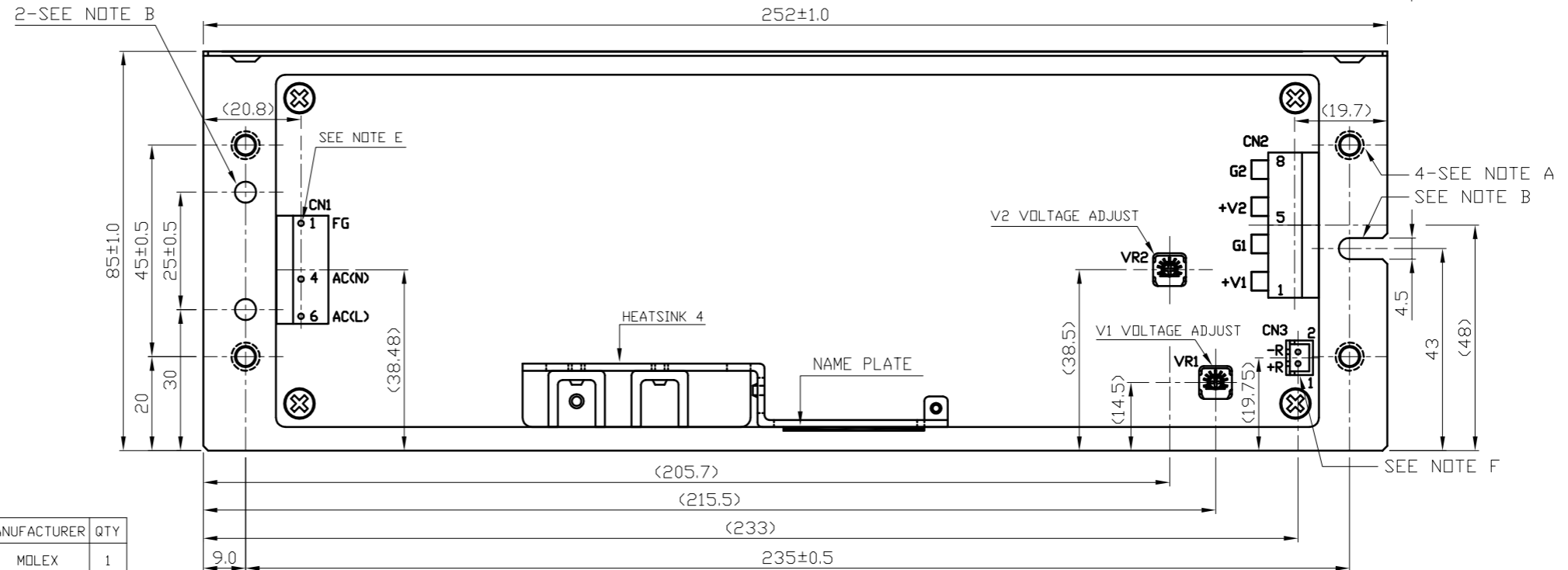
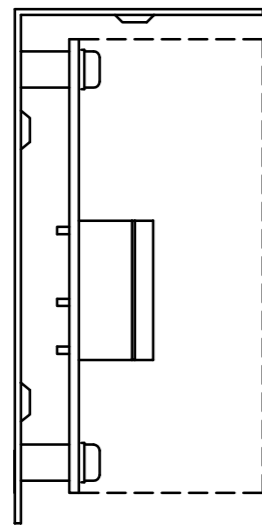
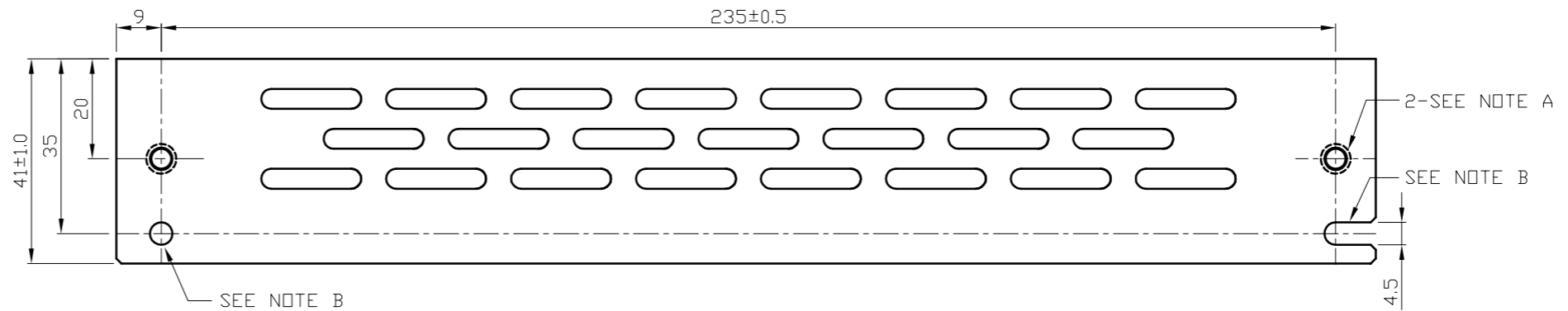


== NAME PLATE ==



SEE NOTE C
SEE NOTE D



CONNECTOR USED :

PART DESCRIPTION	PART NAME	MANUFACTURER	QTY
PIN HEADER (INPUT SIDE CN1)	5414-30B OR 5273-06A(1.4.6)	MOLEX	1
PIN HEADER (OUTPUT SIDE CN2)	5273-08A	MOLEX	1
PIN HEADER (OUTPUT SIDE CN3)	B2B-XH-A	JST	1

* CURRENT OF THE CN2 CONNECTOR PIN MUST BE LESS THAN 5A (7A AT PEAK LOAD)

RECOMMENDED HOUSING & TERMINAL PIN :

* NOT INCLUDED WITH THE PRODUCT.

PART DESCRIPTION	PART NAME	MANUFACTURER	QTY
SOCKET HOUSING (CN1)*1	5195-06	MOLEX	1
SOCKET HOUSING (CN2)*1	5195-08	MOLEX	1
SOCKET HOUSING (CN3)*2	XHP-2	JST	1
TERMINAL PINS (CN1, CN2)	5194PBTL	MOLEX	11
TERMINAL PINS (CN3)*2	BXH-001T-P0.6 OR SXH-001T-P0.6	JST	2

HAND CRIMPING TOOL : 11-26-0058 CN1,CN2 MANUFACTURER : MOLEX
HAND CRIMPING TOOL : YC-110R OR YRS-110 CN3 MANUFACTURER : JST

*1 FOLLOWING HOUSING ARE RECOMMENDED AS EQUIVALENT PARTS

MAIN PARTS	SUB PARTS 1	SUB PARTS 2
5195-06	09-50-3061 (MOLEX) (2139-06)	09-91-0600 (MOLEX) (3069-06)
5195-08	09-50-3081 (MOLEX) (2139-08)	09-91-0800(MOLEX) (3069-08)

*2 APPLICABLE ONLY WHEN USING REMOTE ON/OFF

== NOTE ==

- A. M4 EMBOSSED TAPPED & COUNTERSUNK HOLES (6) ARE FOR CUSTOMER'S CHASSIS MOUNTING. SCREW MUST NOT PROTRUDE INTO POWER SUPPLY BY MORE THAN 6mm.
- B. Ø4.5 HOLES (3) AND R2.25 SLOT HOLES (2) ARE FOR CUSTOMER'S CHASSIS MOUNTING. (USE M4 MOUNTING SCREW)
- C. MODEL NAME, INPUT VOLTAGE RANGE, AVERAGE OUTPUT POWER, NOMINAL OUTPUT VOLTAGE, AVERAGE OUTPUT CURRENT AND PEAK OUTPUT CURRENT ARE SHOWN HERE IN ACCORDANCE WITH THE SPECIFICATIONS.

- D. COUNTRY OF MANUFACTURER WILL BE SHOWN HERE.
- E. FG IS FOR SAFETY GROUND CONNECTION.
- F. CN3 IS NORMALLY SHORTED BY JM-2W-96(JST). IF USING REMOTE ON/OFF, REMOVE JM-2W-96 AND REFER TO THE TABLE FOR RECOMMENDED HOUSING AND TERMINAL PIN.

(unit : mm)

MODEL NAME	ZWD100PAF/L
TDK-Lambda	

PA572-02-01/L-G