

CONNECTOR USED :

| PART DESCRIPTION | PART NAME | MANUFACTURER | QTY |
|------------------------------|-----------|--------------|-----|
| PIN HEADER (INPUT SIDE CN1) | B3P5-VH | JST | 1 |
| PIN HEADER (OUTPUT SIDE CN2) | B8P-VH | JST | 1 |
| PIN HEADER (OUTPUT SIDE CN3) | B2B-XH-A | JST | 1 |

* CURRENT OF THE CN2 CONNECTOR PIN MUST BE LESS THAN 5A (7A AT PEAK LOAD)

RECOMMENDED HOUSING & TERMINAL PIN :

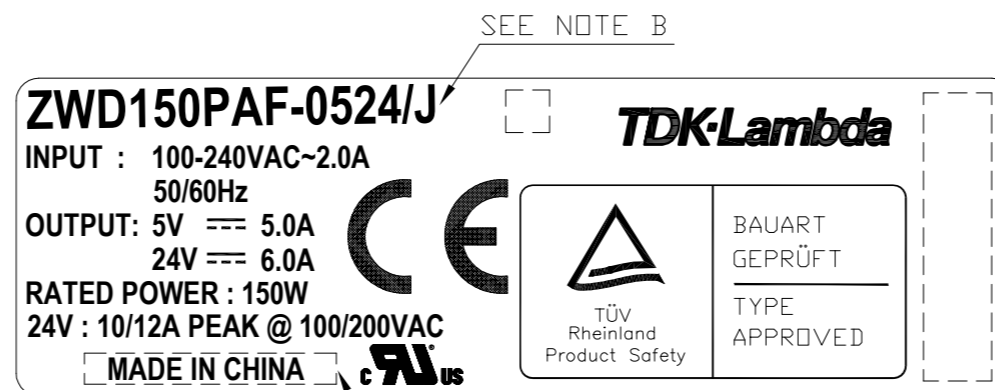
* NOT INCLUDED WITH THE PRODUCT.

| PART DESCRIPTION | PART NAME | MANUFACTURER | QTY |
|--------------------------|--------------------------------|--------------|-----|
| SOCKET HOUSING (CN1) | VHR-5N | JST | 1 |
| SOCKET HOUSING (CN2) | VHR-8N | JST | 1 |
| SOCKET HOUSING (CN3)*1 | XHP-2 | JST | 1 |
| TERMINAL PINS (CN1, CN2) | SVH-21T-P1.1 | JST | 11 |
| TERMINAL PINS (CN3)*1 | BXH-001T-P0.6 OR SXH-001T-P0.6 | JST | 2 |

HAND CRIMPING TOOL : YC-160R CN1,CN2 MANUFACTURER : JST
 HAND CRIMPING TOOL : YC-110R OR YRS-110 CN3 MANUFACTURER : JST

*1 APPLICABLE ONLY WHEN USING REMOTE ON/OFF

== NAME PLATE ==



SEE NOTE B

SEE NOTE C

== NOTE ==

- A. THE 5-ø3.5 HOLES ARE FOR CUSTOMER'S CHASSIS MOUNTING HOLE. ALL MUST BE SCREWED IN ORDER TO CONFORM THE VIBRATION SPEC.
- B. MODEL NAME, INPUT VOLTAGE RANGE, AVERAGE OUTPUT POWER, NOMINAL OUTPUT VOLTAGE, AVERAGE OUTPUT CURRENT AND PEAK OUTPUT CURRENT ARE SHOWN HERE IN ACCORDANCE WITH THE SPECIFICATIONS.
- C. COUNTRY OF MANUFACTURER WILL BE SHOWN HERE.
- D. TO KEEP A DISTANCE MORE THAN 4.5mm FROM PC-BOARD EDGE, LEAD CUT AND COMPONENT HEIGHT TO CUSTOMER'S CHASSIS.
- E. FG IS FOR SAFETY GROUND CONNECTION.
- F. CN3 IS NORMALLY SHORTED BY JM-2W-96(JST). IF USING REMOTE ON/OFF, REMOVE JM-2W-96 AND REFER TO THE TABLE FOR RECOMMENDED HOUSING AND TERMINAL PIN.

(unit : mm)

| | |
|------------|-------------|
| MODEL NAME | ZWD150PAF/J |
|------------|-------------|

TDK-Lambda

PA573-02-01/J-E