

Attracting Tomorrow

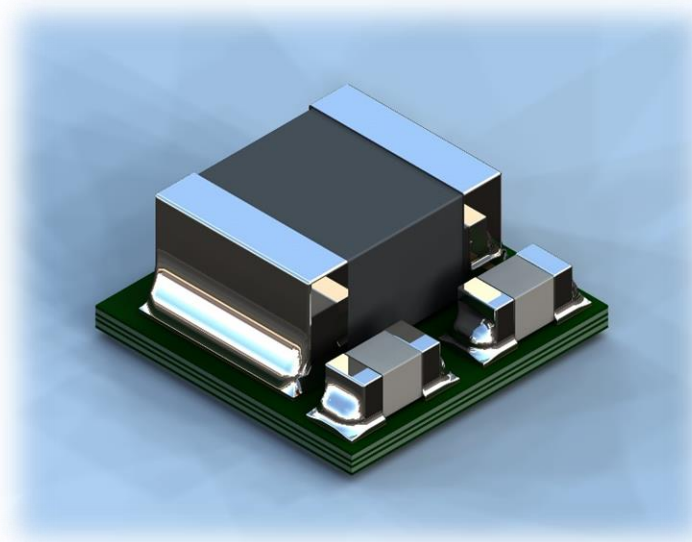


# $\mu$ POL™ Technology

State of the Art DC/DC Converter

## Chip Embedded Power Modules

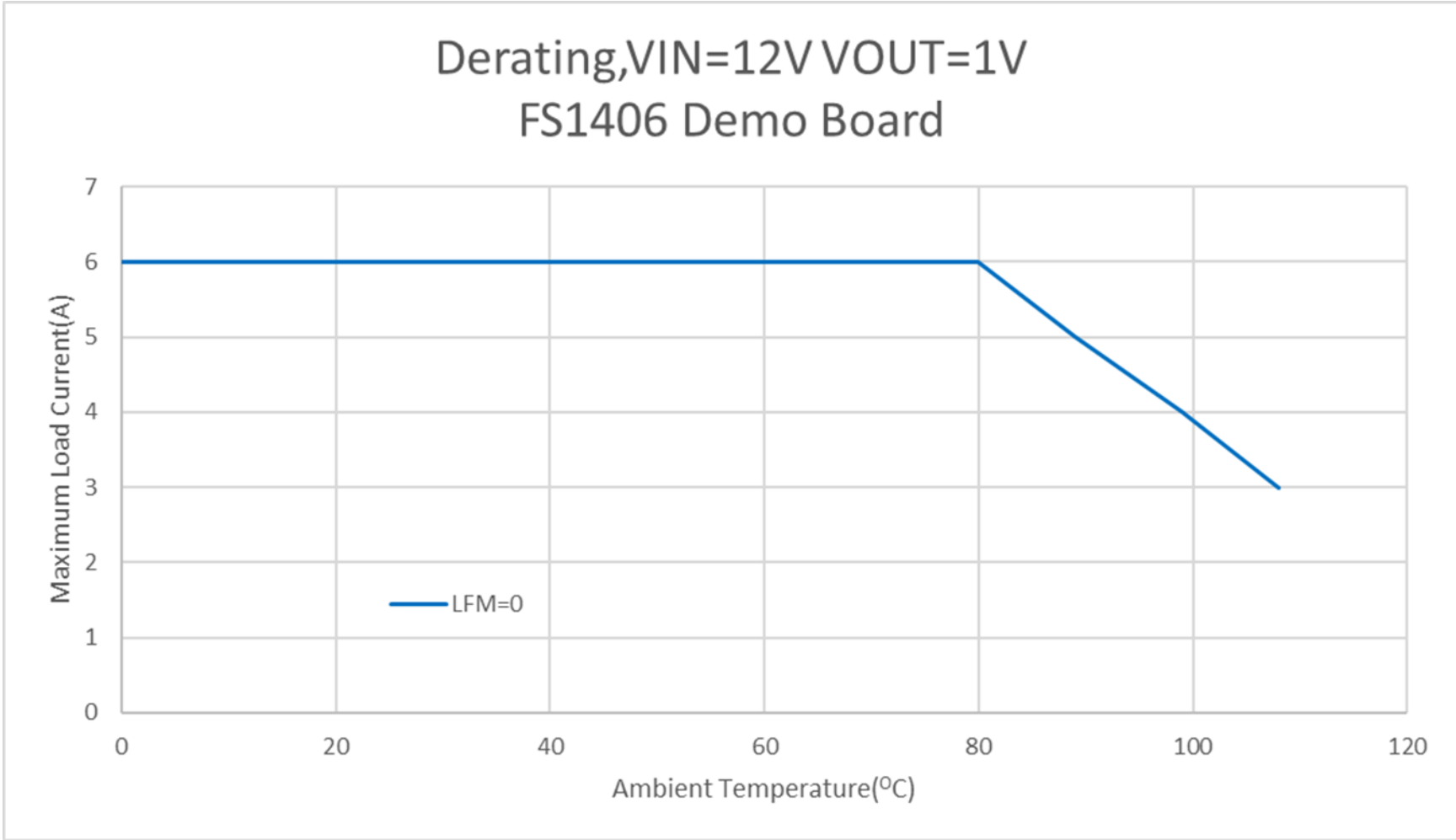
FS1406/ FS1404 / FS1403 Derating Performance



**Faradaysemi**  
A Group Company  
Communication Devices Business Group  
Jan 2021

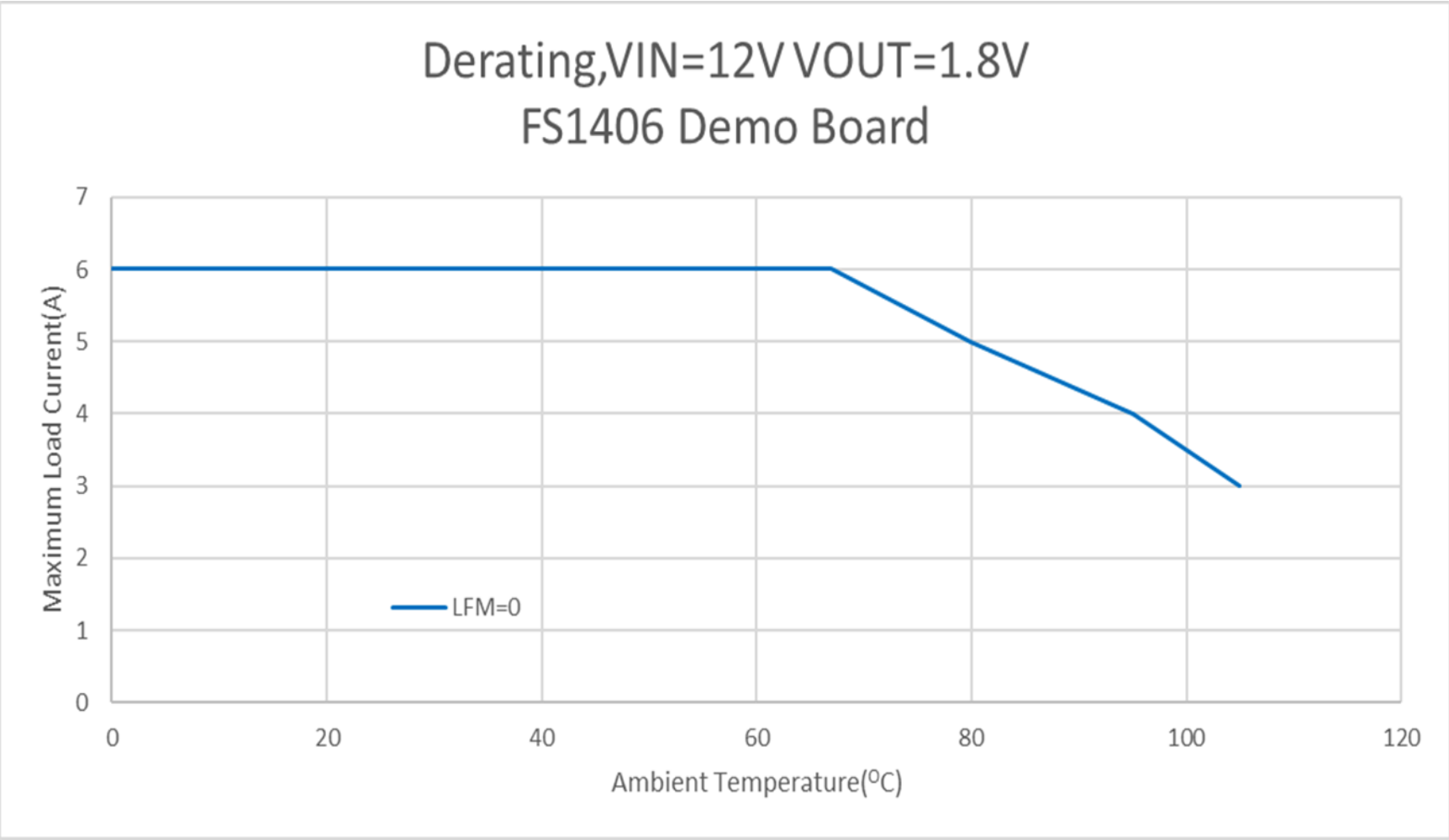


# De-Rating Curves, FS1406



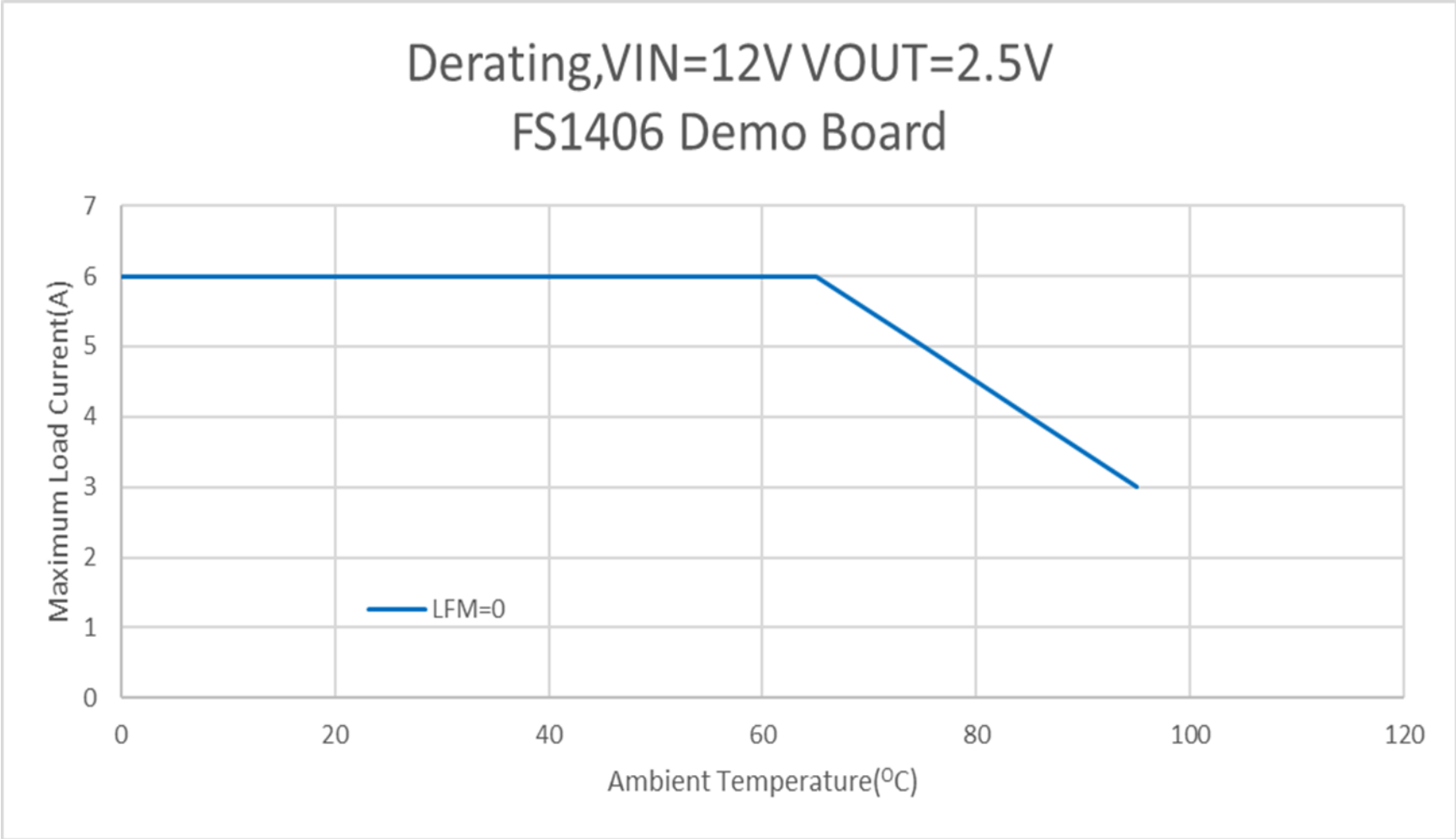
Test Condition: The module temp is monitored and it is kept at or below 125°C while increasing the Ambient temp.

# De-Rating Curves, FS1406



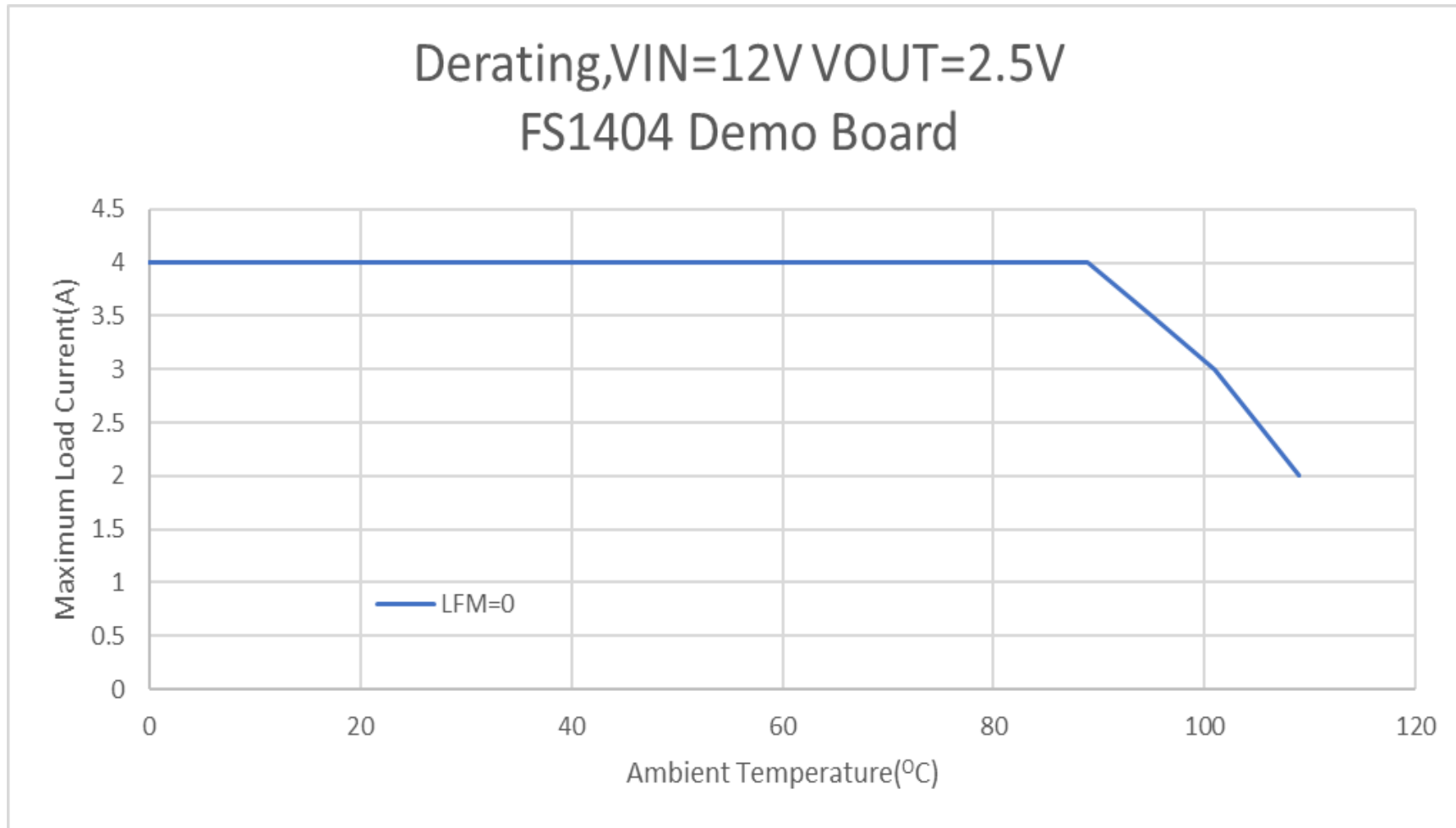
Test Condition: The module temp is monitored and it is kept at or below 125°C while increasing the Ambient temp.

# De-Rating Curves, FS1406



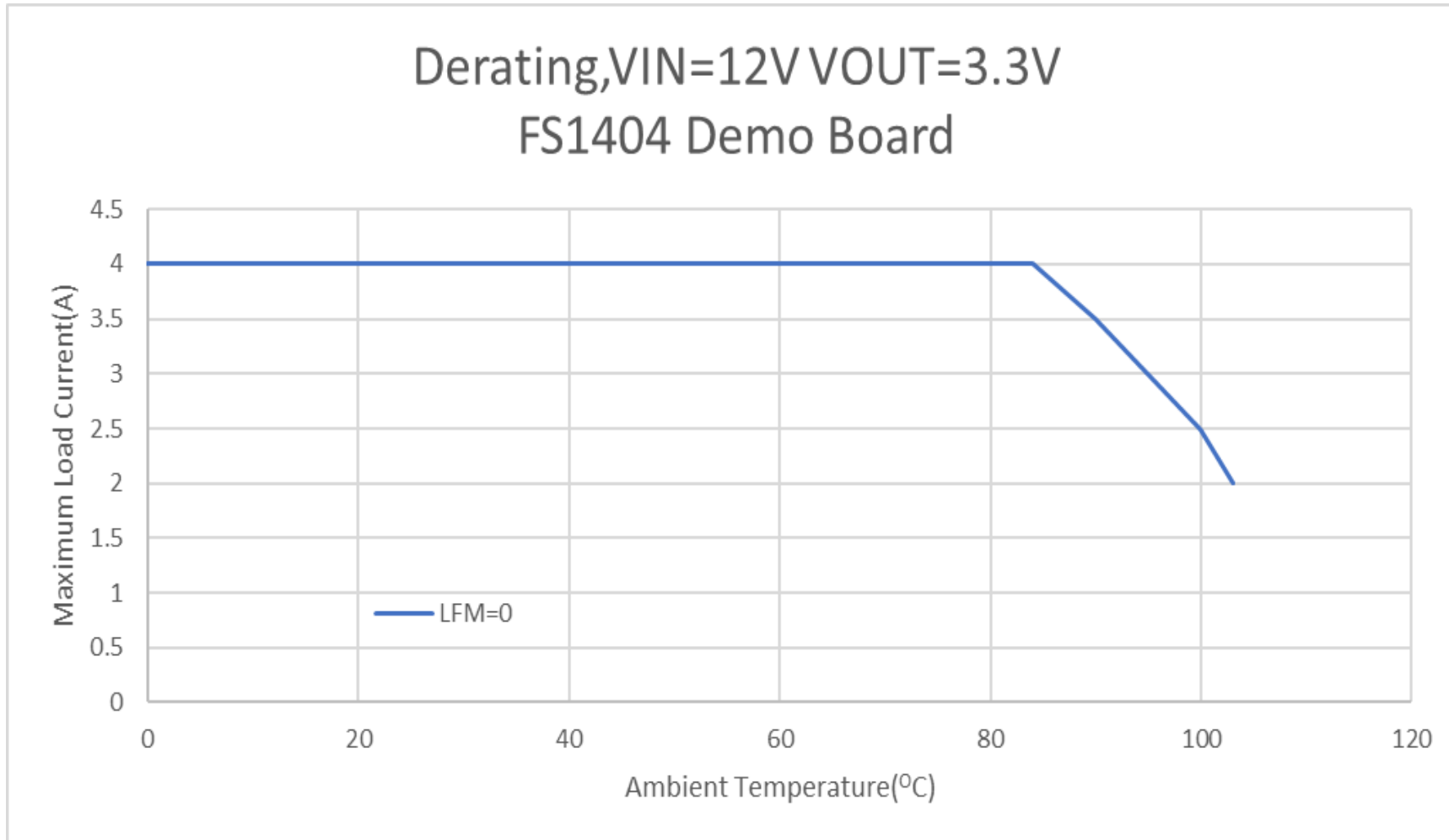
Test Condition: The module temp is monitored and it is kept at or below 125°C while increasing the Ambient temp.

# De-Rating Curves, FS1404



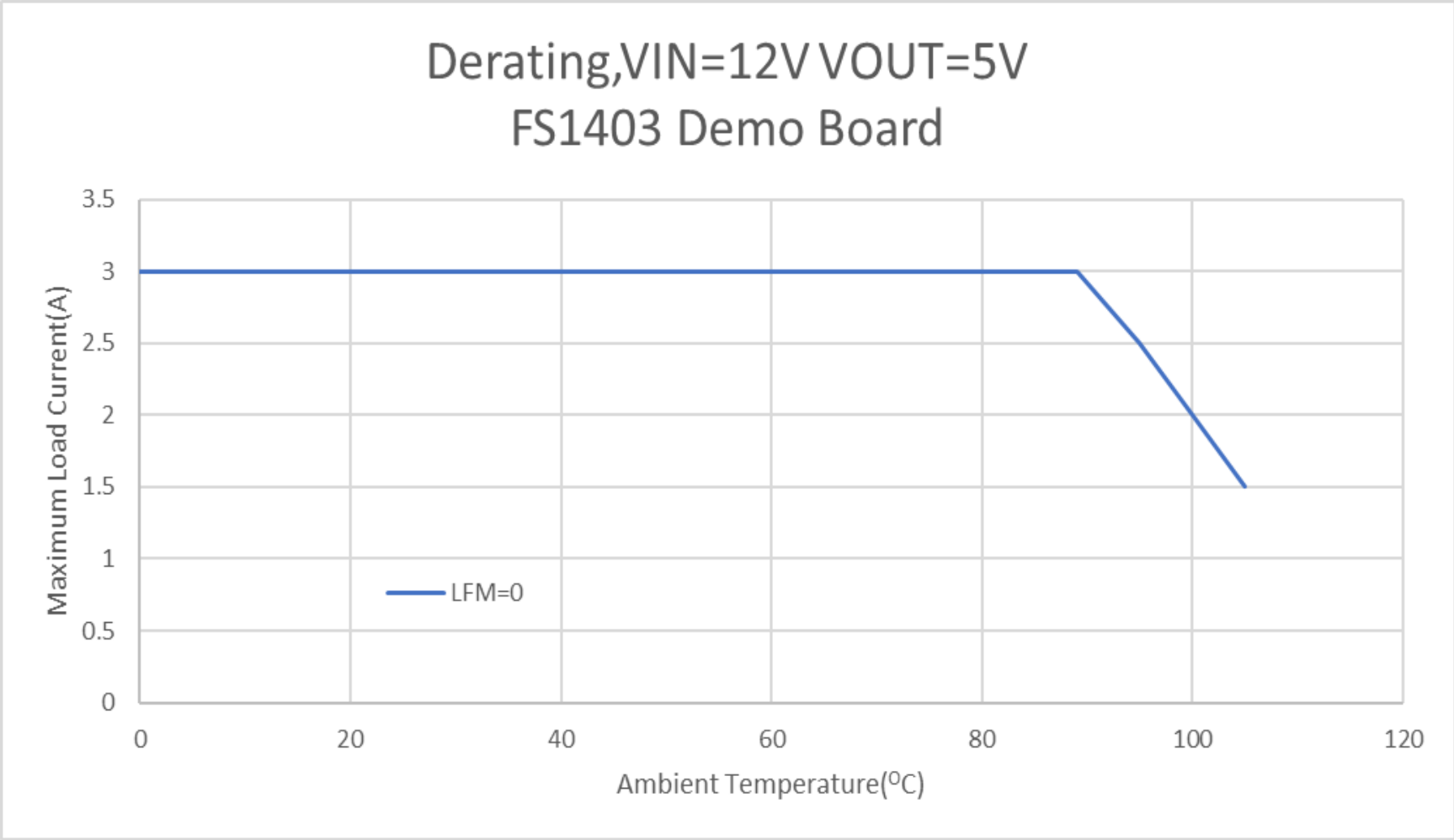
Test Condition: The module temp is monitored and it is kept at or below 125°C while increasing the Ambient temp.

# De-Rating Curves, FS1404



Test Condition: The module temp is monitored and it is kept at or below 125°C while increasing the Ambient temp.

# De-Rating Curves, FS1403



Test Condition: The module temp is monitored and it is kept at or below 125°C while increasing the Ambient temp.

