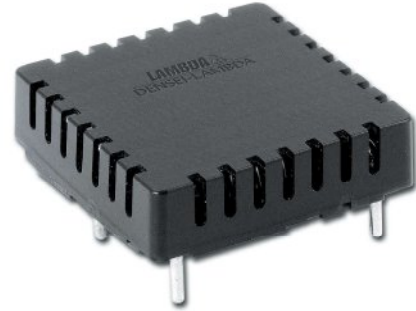


20A, 48VDC pcb mount EMI Filter

Features

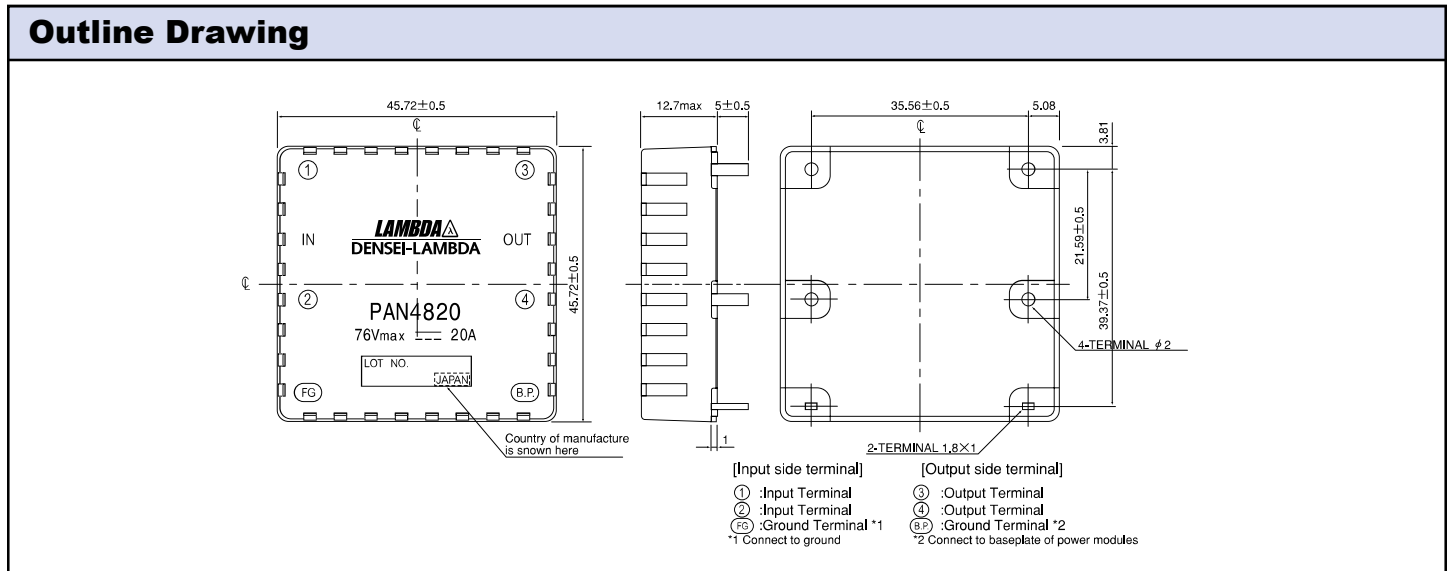
- ◆ Compact Size
- ◆ PCB Mount
- ◆ Conforms to UL1950, CSA950, EN60950
- ◆ Suitable for use with Lambda's PAF Series



Specifications	
Model	PAN4820
Rated Voltage	VDC 76VDC Max
Rated Current	A 20A
Test Voltage (For 1 min.)	V Terminals to Case: 1500VDC; Between terminals: 100VDC
Isolation Resistance	MΩ 100MΩ minimum (terminals to case, 500VDC)
Leakage Current	mA Not Applicable
DC Resistance	mΩ 6
Operating Temperature	°C -40 to +100 (see derating curve)
Storage Temperature	°C -40 to +100
Operating Humidity	- 30 to 95% RH (non condensing)
Storage Humidity	- 10 to 95% RH (non condensing)
Vibration	- 10-55Hz sweep for 1 minute Amplitude 0.825mm (max 49m/s ² , X, Y, Z (1 hour each))
Safety Standards	- Conforms to UL60950, CSA60950, EN60950
Weight (Typ)	g 45
Warranty	- 1 Year

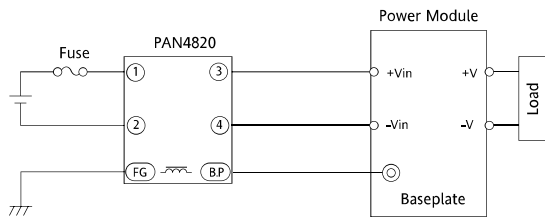
Notes:

(1) Value at Ta ≤35°C. Refer to the derating curve at Ta > 35°C.

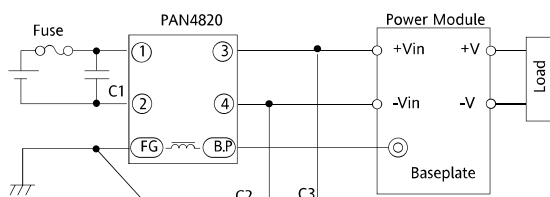


Circuit Connection 1

◆ Conform to EN55011/55022, VCCI Class A

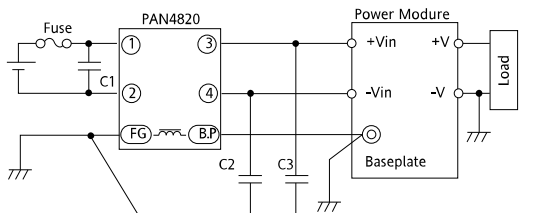
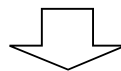
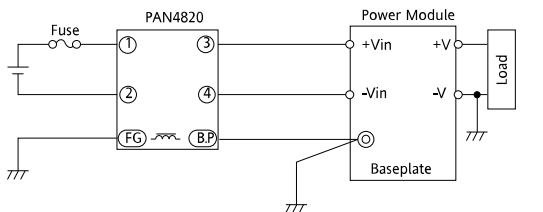


◆ Conform to EN55011/55022, VCCI Class B



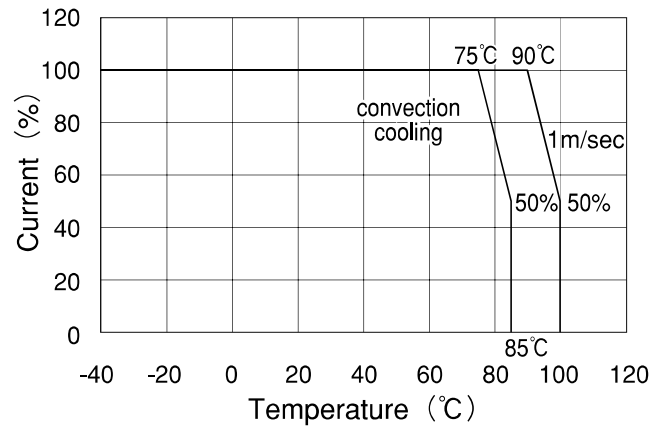
Recommended Values C1: 22 μ F (Ceramic Capacitor)
C2,3: 0.47 μ F (Film or Ceramic Capacitor)

Circuit Connection 2



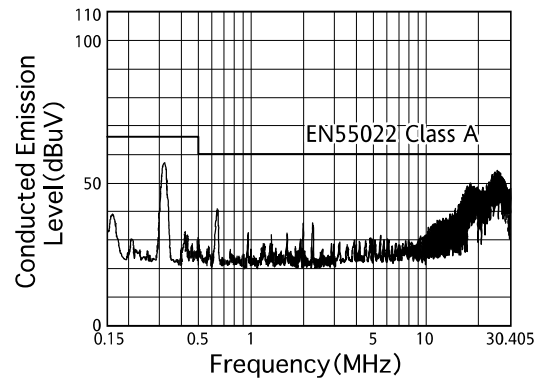
Recommended Values C1: 22 μ F (Ceramic Capacitor)
C2,3: 0.47 μ F (Film or Ceramic Capacitor)

Derating

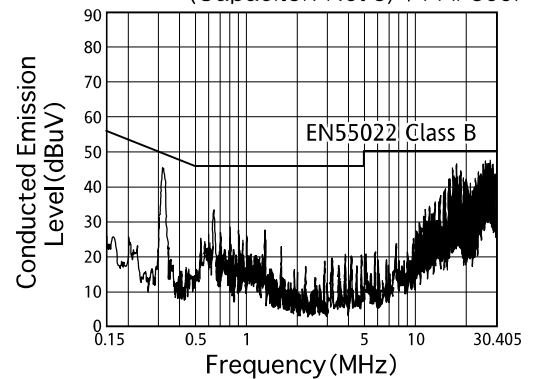


Attenuation

● CLASS-A Application
PAN4820 + PAF500F



● CLASS-B Application
PAN4820 + adding external components
(Capacitor: Net 3) + PAF500F



For Additional Information, please visit
<https://product.tdk.com/en/power/>

