

## RPE-F SERIES

Single-Phase Filter with Fuse and Inlet Socket Type for High Frequency Noise



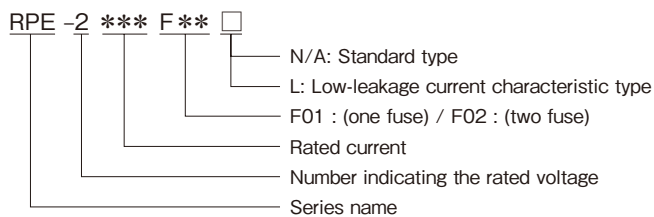
### FEATURES

- The lineup of this series are both F01 type (one fuse) and F02 type (two fuses).
- Easy to maintain due to building in the fuse. (when it ship, it does not attached spare fuse.)
- Leakage current of standard type is 0.5 mA max and also lineup low-leakage current characteristic type is 0.01 mA max.
- Faston terminal #250 (t=0.8mm).

### SAFETY STANDARDS

UL1283  
 CSA C22.2 No.8 (cUL)  
 EN60939-1/-2 (NEMKO)

### PRODUCT IDENTIFICATION



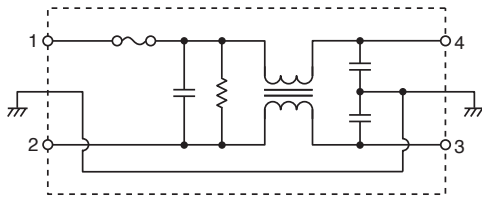
### CONFORMITY TO RoHS Directive

web231206

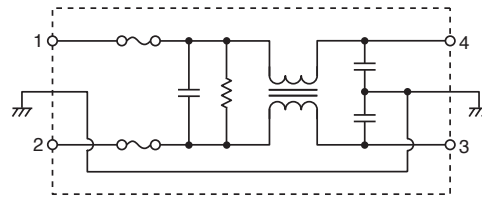
• Faston® is a registered trademark of TE Connectivity.

**■ CIRCUIT DIAGRAMS**

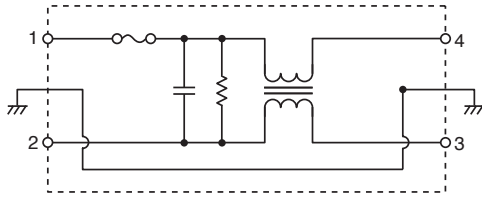
RPE-2 \*\*\* F01



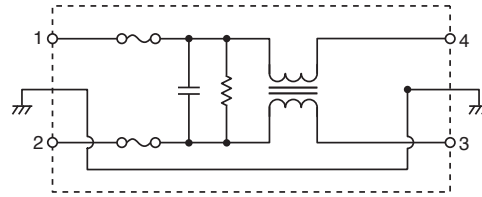
RPE-2 \*\*\* F02



RPE-2 \*\*\* F01L

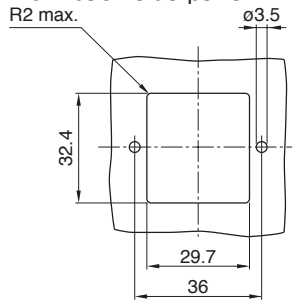


RPE-2 \*\*\* F02L

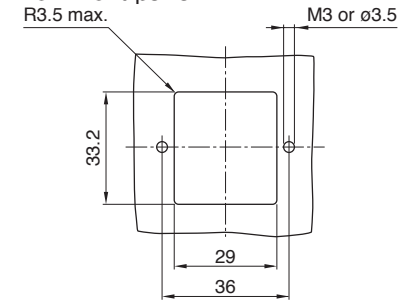


**■ PANEL INSTALLATION MEASUREMENT**

From back side panel



From front panel



**■ ELECTRICAL CHARACTERISTICS**

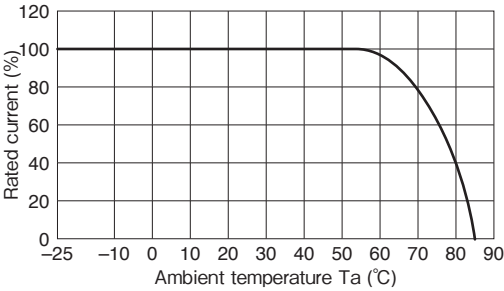
RPE-2 \*\*\* F01 / L02

Part No.	Rated voltage (AC/DC)	Rated current (AC/DC)	Withstand voltage	Insulation resistance	Leakage current	Operating temperature range	With derating over	DC resistance (mΩ)	Attenuation frequency range (MHz)		Weight (g)
									Common mode	Differential mode	
									at 25dB	at 25dB	
RPE-2003F01	250V	3A	AC.1500V 60s [line - earth]	100MΩ min. [DC.500V/ 1min]	0.5mA max. [250V/60Hz]	-25 to +85°C	55°C	150 max.	0.5 to 10	2 to 10	70
RPE-2006F01		6A							2 to 10	3 to 10	
RPE-2003F02		3A							0.5 to 10	2 to 10	
RPE-2006F02		6A							2 to 10	3 to 10	

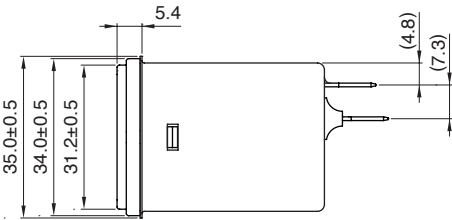
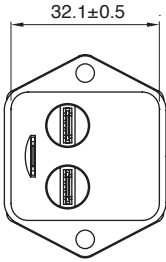
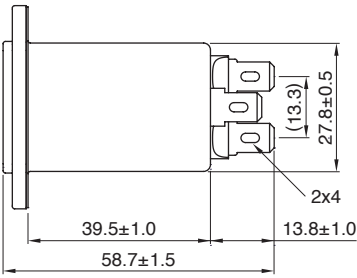
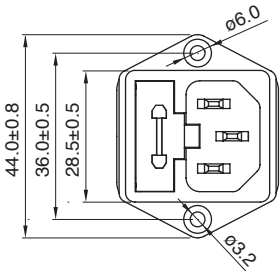
RPE-2 \*\*\* F01L/02L

Part No.	Rated voltage (AC/DC)	Rated current (AC/DC)	Withstand voltage	Insulation resistance	Leakage current	Operating temperature range	With derating over	DC resistance (mΩ)	Attenuation frequency range (MHz)		Weight (g)
									Common mode	Differential mode	
									at 10dB	at 15dB	
RPE-2003F01L	250V	3A	AC.1500V 60s [line - earth]	100MΩ min. [DC.500V/ 1min]	0.01mA max. [250V/60Hz]	-25 to +85°C	55°C	150 max.	0.2 to 10	1 to 10	70
RPE-2006F01L		6A							0.3 to 10	2 to 10	
RPE-2003F02L		3A							0.2 to 10	1 to 10	
RPE-2006F02L		6A							0.3 to 10	2 to 10	

DERATING GRAPH



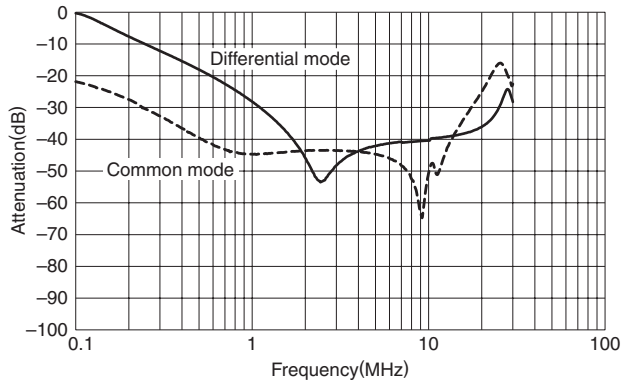
SHAPES AND DIMENSIONS



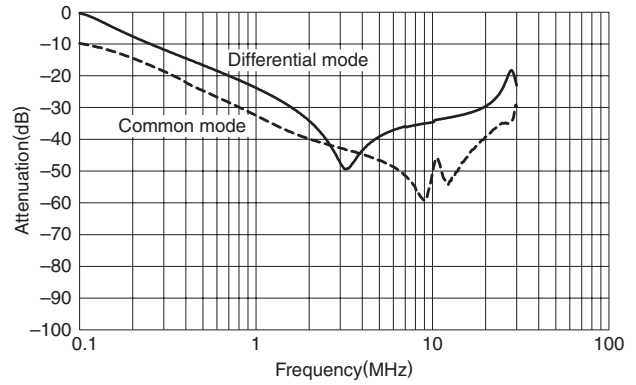
Dimensions in mm

■ ATTENUATION vs. FREQUENCY CHARACTERISTICS

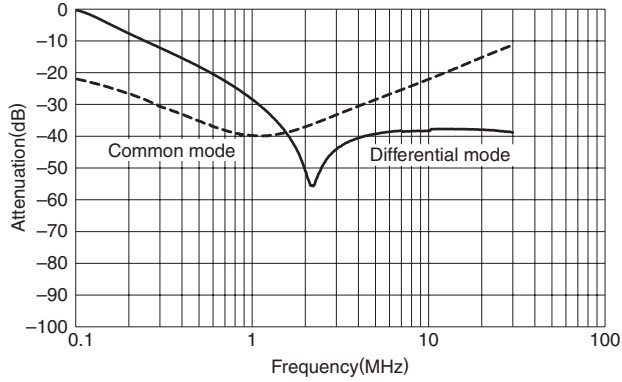
RPE-2003F01/02



RPE-2006F01/02



RPE-2003F01L/02L



RPE-2006F01L/02L

