

## RPE SERIES

Single-Phase Filter with Inlet Socket Type for High Frequency Noise



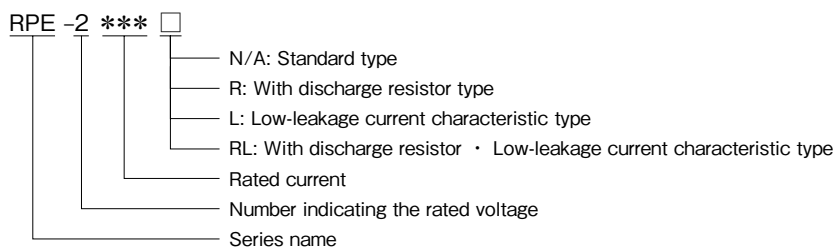
### FEATURES

- This product provides superior attenuation for both differential mode and common mode noise.
- Amorphous core is used as the common mode coil core for this series, which helps prevent high frequency noise.
- Leakage current of standard type is 0.5 mA max and also lineup low-leakage current characteristic type is 0.01 mA max.
- Faston terminal #250 (t=0.8mm).

### SAFETY STANDARDS

UL1283	UL File No. E62388
CSA C22.2 No.8 (cUL)	UL File No. E62388
EN60939-1/-2 (NEMKO)	Certificate No. P12215895

### PRODUCT IDENTIFICATION

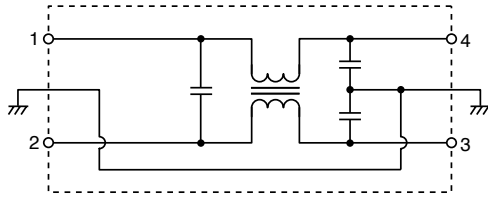


### CONFORMITY TO RoHS Directive

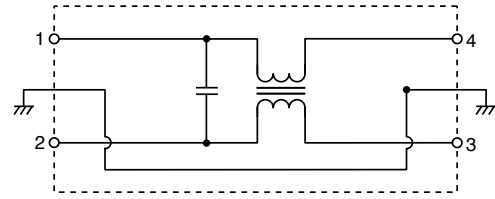
• Faston® is a registered trademark of TE Connectivity.

**CIRCUIT DIAGRAMS**

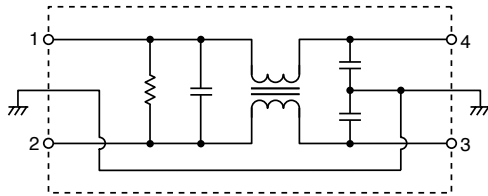
RPE-2 \*\*\*



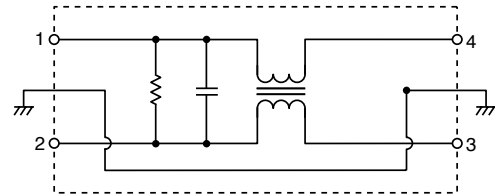
RPE-2 \*\*\* L



RPE-2 \*\*\* R

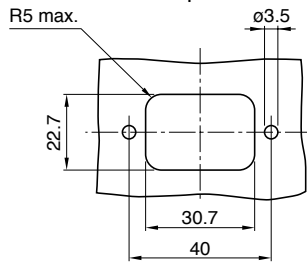


RPE-2 \*\*\* RL

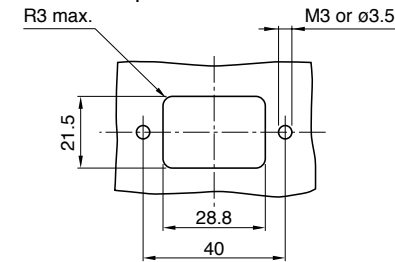


**PANEL INSTALLATION MEASUREMENT**

From back side panel



From front panel



**ELECTRICAL CHARACTERISTICS**

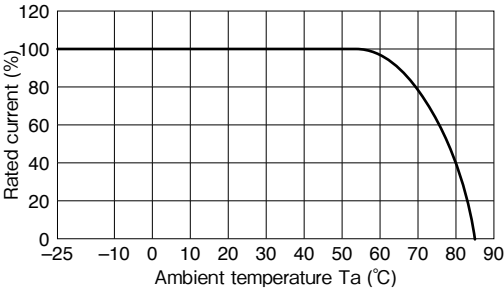
RPE-2 \*\*\* / R

Part No.	Rated voltage (AC/DC)	Rated current (AC/DC)	Withstand voltage	Insulation resistance	Leakage current	Operating temperature range	With derating over	DC resistance (mΩ)	Attenuation frequency range (MHz)		Weight (g)
									Common mode at 25dB	Differential mode at 25dB	
RPE-2003	250V	3A	AC.1500V 60s [line - earth]	100MΩ min. [DC.500V/ 1min]	0.5mA max. [250V/60Hz]	-25 to +85°C	55°C	150 max.	1 to 30	3 to 30	40
RPE-2006		6A						100 max.	2 to 30	5 to 30	40
RPE-2010		10A						30 max.	5 to 30	10 to 30	40
RPE-2003R		3A						150 max.	1 to 30	3 to 30	40
RPE-2006R		6A						100 max.	2 to 30	5 to 30	40
RPE-2010R		10A						30 max.	5 to 30	10 to 30	40

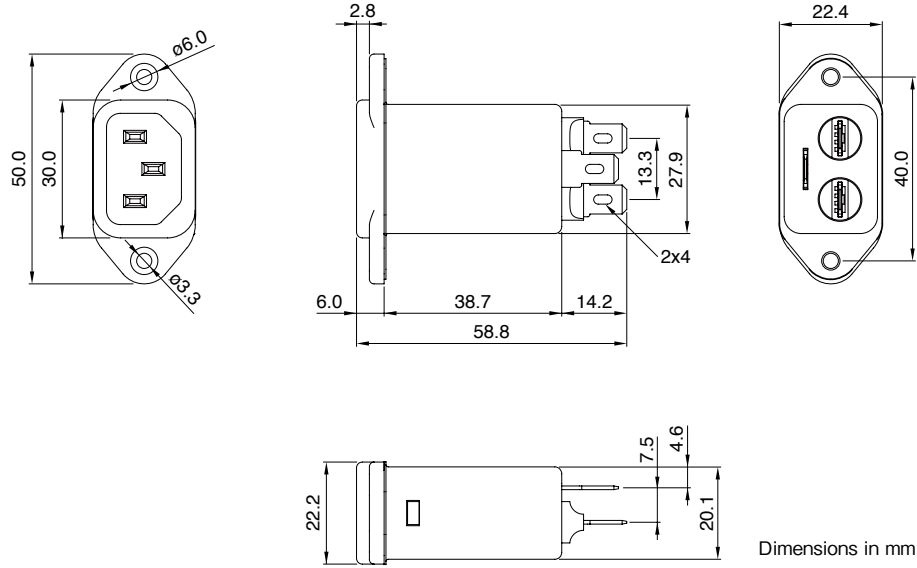
RPE-2 \*\*\* L/RL

Part No.	Rated voltage (AC/DC)	Rated current (AC/DC)	Withstand voltage	Insulation resistance	Leakage current	Operating temperature range	With derating over	DC resistance (mΩ)	Attenuation frequency range (MHz)		Weight (g)
									Common mode at 10dB	Differential mode at 15dB	
RPE-2003L	250V	3A	AC.1500V 60s [line - earth]	100MΩ min. [DC.500V/ 1min]	0.01mA max. [250V/60Hz]	-25 to +85°C	55°C	150 max.	0.3 to 5	1 to 30	40
RPE-2006L		6A						100 max.	0.4 to 5	2 to 30	40
RPE-2010L		10A						30 max.	1 to 5	3 to 30	40
RPE-2003RL		3A						150 max.	0.3 to 5	1 to 30	40
RPE-2006RL		6A						100 max.	0.4 to 5	2 to 30	40
RPE-2010RL		10A						30 max.	1 to 5	3 to 30	40

DERATING GRAPH



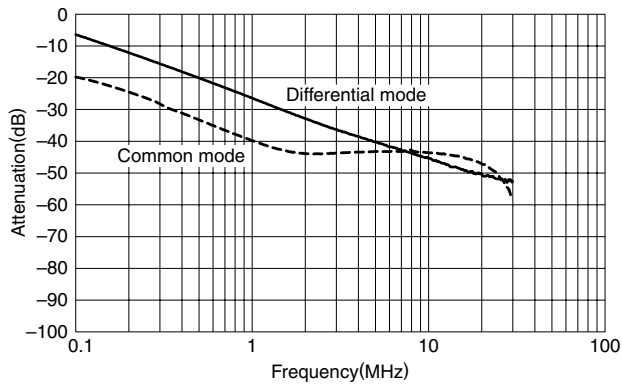
MECHANICAL



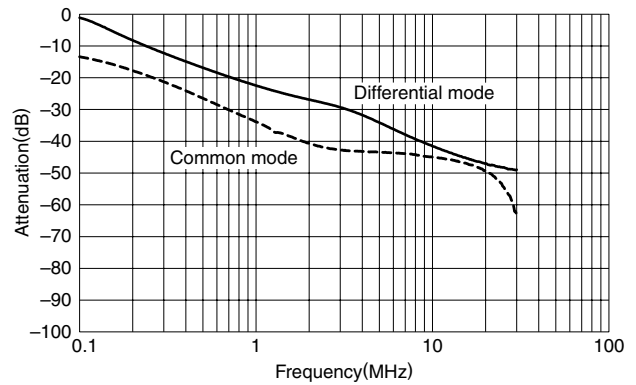
All specifications are subject to change without notice.

**ATTENUATION vs. FREQUENCY CHARACTERISTICS**

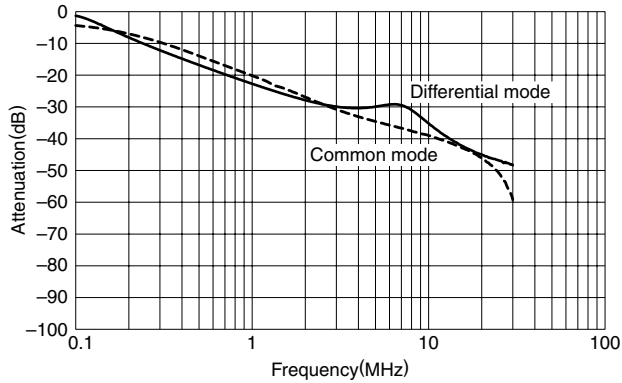
RPE-2003/RPE-2003R



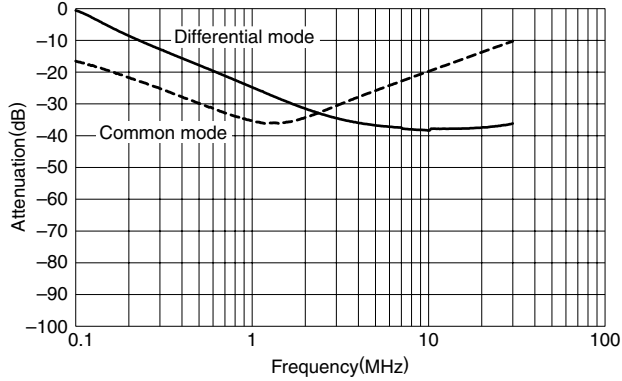
RPE-2006/RPE-2006R



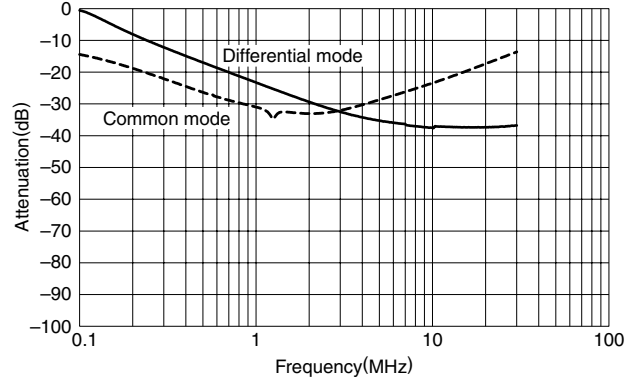
RPE-2010/RPE-2010R



RPE-2003L/RPE-2003R



RPE-2006L/RPE-2006RL



RPE-2010L/RPE-2010RL

