



FOUP Load Port

TAS450

TYPE: A2

The TAS450 is the latest generation of Load Port from TDK, supporting both FOUP and H-MAC. The TAS450 is innovative design, easy set-up, and superior reliability. The TAS450 is a high-performance module that meet your needs for particle-free operation, fast throughput.

FOUP Load Port

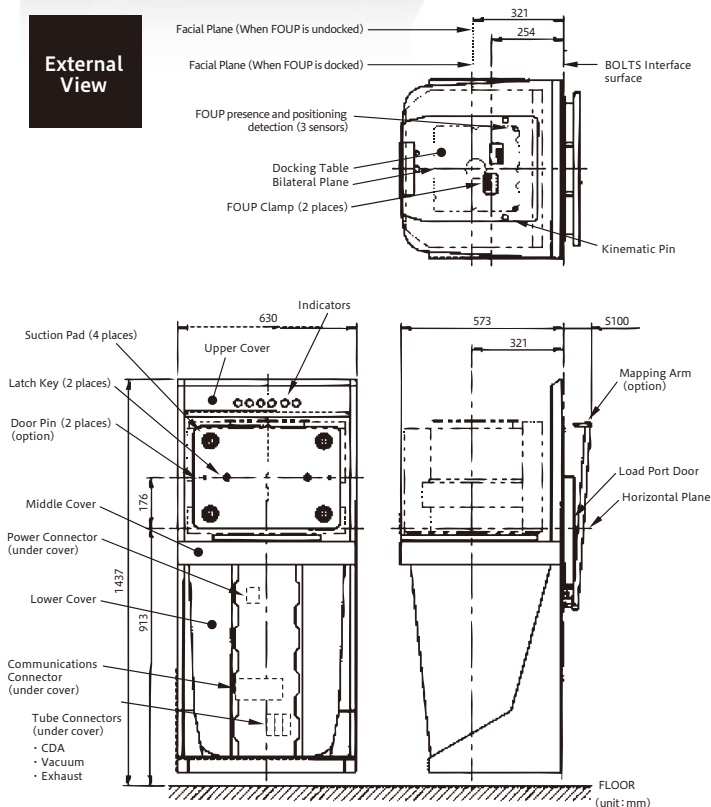
TAS450 TYPE:A2



Features

- 1 SEMI Standard E154** MECHANICAL INTERFACE SPECIFICATION FOR 450mm LOAD PORT
- 2** With all moving parts, including mapping unit, are installed below the wafer surface, which provides high-level particle-free design.
- 3** Transmission-type mapping unit optionally available.
- 4** Obstacle detection sensors on Dock position.
- 5** FOUP/H-MAC presence / Placement detection.

External View



Supported FOUPs

450-mm FOUPs compliant with SEMI E158 and E154

Standard Specifications

External Dimensions and Weight	Full Height		1,437mm
	Full Width		630mm
	Depth		573mm (From BOLTS interface surface)
	Weight		115kg (excluding all options other than mapper)
Operation Times	Without mapping (Standard)	Load	Max.10sec(FOUP set→Robot access enable)
		Unload	Max.10sec(Robot access enable→FOUP eject enable)
Operation Times	With mapping (Option)	Load	Max.15sec(FOUP set→Robot access enable)
		Unload	Max.10sec(Robot access enable→FOUP eject enable)
Docking Mechanism	FOUP clamp		Hold down feature (Air driven)
	FOUP door lock		Vacuum suction
	Wafer position at docking		
Utilities	Clean dry air	Pressure	0.52 - 0.60 MPa(G)
		Flow	30L/min (ANR)
	Vacuum	Pressure	-61 ± 10kPa(G)
		Flow	10L/min (ANR)
Exhaust			6-mm outer-diameter air tube
Interface	Power Source		24VDC ± 5%, 3A (2-A at full load) Breaking capacity: 50A
	Communication		

Options

Power Cable	Length	2m ; 4m ; 6m
	Carrier ID Reader/Writer	Omron V640 Brooks LF80 ; LF60 Solid Asyst ATR9100
E84	Optical I/O only	Hokuyo Automatic DMS-HB1; DMG-HB1
	Serial comm. control	Details available on request.
Interface		Ethernet (Details available on request.)
Comm. Protocol		SECS (Details available on request.)
Lockout Pads 1,2		Lockout pins
Info Pads A, B, C, D, E, F		Electrical detection and lockout pins
Doubled-wafer detection sensor		Details available on request.
CE Marking		Yes

Safety and Usage Precautions

TDK has prepared documentation providing important safety precautions and explaining how to use this equipment correctly and efficiently. Please request this documentation and read through it before using this equipment.



TDK Corporation

Technical Center Tel: 81-4-7378-9227
2-15-7 Higashi Owada, Ichikawa-shi,
Chiba 272-8558, Japan

<https://product.tdk.com/info/en/products/fa/index.html>