

CONNECTORS USED :

PART DESCRIPTION	PART NAME	MANUFACTURER	QTY
PIN HEADER (INPUT SIDE CN1)	B3P5-VH(LF)(SN)	J.S.T	1
PIN HEADER (OUTPUT SIDE CN51)	B8P-VH(LF)(SN)	J.S.T	1

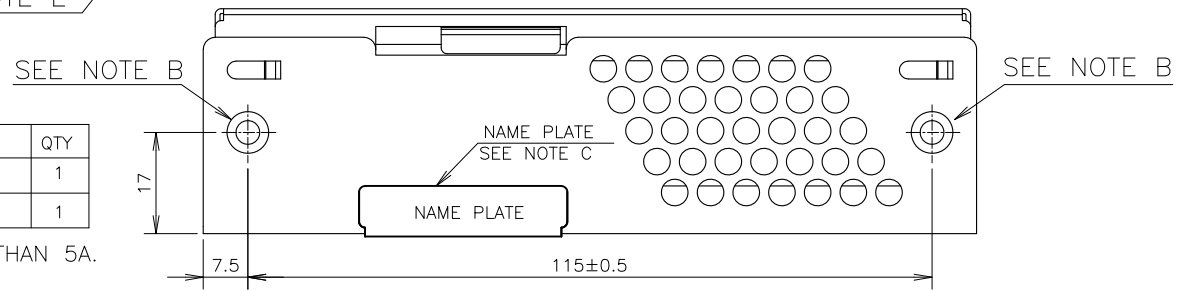
\*OUTPUT CURRENT OF EACH CONNECTOR PIN MUST BE LESS THAN 5A. MATCHING HOUSINGS (NOT INCLUDED WITH THE PRODUCT):

PART DESCRIPTION	PART NAME	MANUFACTURER	QTY
SOCKET HOUSING (CN1)	VHR-5N	J.S.T	1
SOCKET HOUSING (CN51)	VHR-8N	J.S.T	1

MATCHING PINS & TOOL (NOT INCLUDED WITH THE PRODUCT):

PART DESCRIPTION	PART NAME	MANUFACTURER	QTY
TERMINAL PINS	SVH-21T-P1.1	J.S.T	11
	BVH-21T-P1.1		
HAND CRIMPING TOOL	YC-160R	J.S.T	-

PART DESCRIPTION	PART NAME	MANUFACTURER	QTY
TERMINAL PINS	SVH-41T-P1.1	J.S.T	11
	BVH-41T-P1.1		
HAND CRIMPING TOOL	YC-930R	J.S.T	-
	YC-931R		



NOTES :

- A: THE 2-M3 TAPPED & STANDOFF FOR CUSTOMER'S CHASSIS MOUNTING. SCREWS MUST NOT PROTRUDE INTO POWER SUPPLY BY MORE THAN 5mm.
- B: THE 2-M4 EMBOSSED TAPPED & COUNTER-SUNK HOLES FOR CUSTOMER'S CHASSIS MOUNTING. SCREWS MUST NOT PROTRUDE INTO POWER SUPPLY BY MORE THAN 8mm.
- C: MODEL NAME, INPUT VOLTAGE RANGE, NOMINAL OUTPUT VOLTAGE, NOMINAL OUTPUT CURRENT, PEAK OUTPUT CURRENT AND SAFETY MARKING(FOR ONLY APPROVED PRODUCTS)ARE SHOWN ON THE NAME PLATE IN ACCORDANCE WITH THE SPECIFICATIONS. COUNTRY OF MANUFACTURE WILL BE SHOWN ON THE NAME PLATE.
- D: IS FOR SAFETY GROUND CONNECTION.
- E: TO KEEP THE DISTANCE MORE THAN 4mm BETWEEN PC-BOARD EDGE FOR FRONT & BACK SIDE AND CUSTOMER'S CHASSIS.

(unit : mm)

MODEL NAME	CUT75J/A
<b>TDK-Lambda</b>	

CA874-02-01/A-B