

JWT 100/RA

**SPECIFICATIONS**

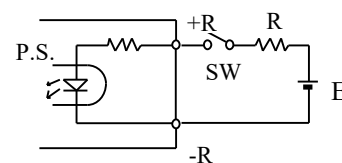
A179-01-01/RA-F

ITEMS	MODEL	JWT100-522/RA			JWT100-5FF/RA			JWT100-525/RA				
		V1	V2	V3	V1	V2	V3	V1	V2	V3		
1	Nominal Output Voltage	V	+5	+12	-12	+5	+15	-15	+5	+12	-5	
2	Minimum Output Current (*1)	A	1.3	0	0	1.3	0	0	1.3	0	0	
3	Maximum Output Current	A	13	5.5	1	13	4.5	1	13	5.5	1	
4	Maximum Output Power / CH	W	65	66	12	65	67.5	15	65	66	5	
5	Total Allowable Output Power	W	100			100			100			
6	Efficiency (Typ) (*2)	-	72%									
7	Input Voltage Range (*3)	-	85 - 265VAC (47 - 63Hz) or 120 - 330VDC									
8	Input Current (100/200VAC) (Typ) (*2)	A	1.4 / 0.7									
9	Inrush Current (Typ) (*2,4)	A	14A at 100VAC, 28A at 200VAC, Ta=25°C, Cold Start									
10	PFHC	-	Designed to meet EN61000-3-2									
11	Power Factor (100/200VAC) (Typ) (*2)	-	0.99 / 0.93									
12	Output Voltage Range	V	5.0 - 5.25	Fixed	Fixed	5.0 - 5.25	Fixed	Fixed	5.0 - 5.25	Fixed	Fixed	
13	Output Voltage Accuracy	-	-	±5%	±5%	-	±5%	±5%	-	±5%	±5%	
14	Maximum Ripple & Noise (*5)	0≤Ta≤50°C	mV	120	150	150	120	150	150	120	150	150
		-10≤Ta≤0°C	mV	160	180	180	160	180	180	160	180	180
15	Maximum Line Regulation (*6)	mV	20	48	48	20	60	60	20	48	20	
16	Maximum Load Regulation (*7)	mV	40	100	150	40	120	150	40	100	100	
17	Temperature Coefficient	-	V1,V2:Less than 0.02% / °C, V3:Less than 0.03% / °C									
18	Over Current Protection (*8)	A	More than 105%									
19	Over Voltage Protection (*9)	V	5.7 - 7.0	-	-	5.7 - 7.0	-	-	5.7 - 7.0	-	-	
20	Hold-Up Time (Typ) (*10)	-	20 ms									
21	Leakage Current (*11)	-	0.75mA MAX,0.2mA(Typ) at 100VAC / 0.44mA(Typ) at 230VAC									
22	Remote ON/OFF Control (*12)	-	Possible									
23	Parallel Operation	-	-									
24	Series Operation	-	-									
25	Operating Temperature (*12)	-	-10 to +50°C (-10 to +40°C :100%, +50°C :60%)									
26	Operating Humidity	-	30 to 90%RH									
27	Storage Temperature	-	-30 to +85°C									
28	Storage Humidity	-	10 to 95%RH									
29	Cooling	-	Convection Cooling									
30	Withstand Voltage	-	Input - FG:2kVAC(20mA), Input - Output:3kVAC (20mA) Output - FG:500VAC(100mA), for 1min.									
31	Isolation Resistance	-	More than 100MΩ at 25°C and 70%RH Output - FG : 500VDC									
32	Vibration	-	At no operating, 10-55Hz (Sweep for 1min) 19.6m/s <sup>2</sup> Constant, X,Y,Z 1h each.									
33	Shock (In package)	-	Less than 196.1m/s <sup>2</sup>									
34	Safety (*13)	-	Approved by UL62368-1, CSA62368-1, EN62368-1, UL60950-1, CSA60950-1, EN60950-1 (Expire date of 60950-1 : 20/12/2020) Designed to meet DENAN									
35	Conducted Emission	-	Designed to meet EN55011 / EN55032-B, FCC-ClassB, VCCI-B.									
36	Radiated Emission	-	Designed to meet EN55011 / EN55032-B, FCC-ClassB, VCCI-B.									
37	Weight (Typ)	-	820g									
38	Size (W x H x D)	mm	49 x 92 x 203 (Refer to Outline Drawing)									

\*Read instruction manual carefully, before using the power supply unit.

=NOTES=

- \*1. For V2, V3 stability, to keep V1 minimum output current.
- \*2. At 100/200VAC, Ta=25°C and maximum output power.
- \*3. For cases where conformance to various safety specs (UL, CSA, EN) are required, input voltage range will be 100 - 240VAC(50/60Hz).
- \*4. No applicable for the in-rush current to Noise Filter less than 0.2ms.
- \*5. Measure with JEITA RC-9131 probe, Bandwidth of scope :100MHz.
- \*6. 85 - 265VAC, constant load.
- \*7. Minimum load - Full load, constant input voltage.
- \*8. Constant current limit with automatic recovery.  
(Only V3 of 522 and 5FF is Hiccup with automatic recovery)  
V3: Output might shutdown when output current exceeds 200% of rated output current.  
Output can be recovered by recycling input.
- \*9. OVP circuit will shut down all outputs, manual reset (Line recycle).
- \*10. At 100/200VAC nominal output voltage and maximum total output power.
- \*11. Measured by the each measuring method of UL, CSA, EN and DENAN (at 60Hz, Ta=25°C).
- \*12. As for ON/OFF control mode, see the right figure.
- \*13. Ratings - Derating at standard mounting.  
- Load (%) is percent of maximum output power or maximum output current, whichever is greater.  
- As for other mountings, refer to derating curve (A179-01-02/A- ).
- \*14. As for DENAN, designed to meet at 100VAC.



ON/OFF control mode

+R&-R terminal condition	Output condition
SW ON(Higher than 4.5V)	ON
SW OFF(Lower than 0.8V)	OFF

External voltage level : E	External resistance : R
4.5 - 12.5VDC	No required
12.5 - 24.5VDC	1.5kΩ