

ZWD75 SPECIFICATIONS

PA790-01-01 D

ITEMS	MODEL	ZWD75-0512		ZWD75-0524		
		V1	V2	V1	V2	
1	Nominal Output Voltage	V	+5	+12	+5	+24
2	Minimum Output Current	A	0.5	0.8	0.5	0.8
3	Average Output Current	A	3	3	3	2
4	Peak Output Current (*1)	A	6	4	6	3
5	Average Output Power/CH	W	15	36	15	48
6	Average Output Power	W	51		63	
7	Peak Output Power/CH (*1)	W	30	48	30	72
8	Peak Output Power (*1)	W	75		75	
9	Efficiency (typ) (*2)	%	73		75	
10	Input Voltage Range (*3)	-	85~132VAC / 170~265VAC (47~440Hz) Automatically switchable or 230~330VDC			
11	Input Current (typ) (*2)	-	1.4A at 100VAC / 0.7A at 200VAC			
12	In-rush Current (typ) (*4)	-	30A at 100 / 200VAC			
13	Output Voltage Range	-	±5%	Fixed	±5%	Fixed
14	Maximum Ripple & Noise (*10)	mV	120	240	120	480
15	Maximum Line Regulation (*5,*10)	-	+5%	+10%	+5%	+10%
16	Maximum load regulation (*6,*10)	-				
17	Maximum Temperature Drift (*7,*10)	-				
18	Conducted EMI	-	Built to meet FCC-B, VCCI-II, VDE Class-B			
19	Safety Agency	-	Built to meet UL1950, CSA C22.2 No. 234, EN60950 S.E.L.V			
20	Over Current Protection (*8)	-	105% ~			
21	Over Voltage Protection (*9)	-	110 ~ 135 %	135 ~ 160%	110 ~ 135 %	135 ~ 160%
22	Hold Up Time (typ) (*2)	-	20ms			
23	Operating Temperature (*11)	-	-10°C ~ +60°C			
24	Operating Humidity	-	30 ~ 90%RH (No dewdrop)			
25	Storage Temperature	-	-30°C ~ +85°C			
26	Storage Humidity	-	10 ~ 90%RH (No dewdrop)			
27	Cooling	-	Convection cooled			
28	Withstand Voltage	-	Input-FG... 2.0KVAC (20mA) 1 Min, Input-Output... 3.0KVAC (20mA) 1 Min, Output-FG... 500VAC (100mA) 1 Min			
29	Isolation Resistance	-	More than 100Mohm at 25°C and 70%RH Output-FG 500VDC			
30	Vibration	-	10 ~ 55Hz Amplitude (sweep 1 min) Less than 2G ... X, Y, Z 1 hr each			
31	Shock	-	Less than 20G			
32	Weight	-	350g			
33	Size (W/H/D)	-	99mm X 35.5mm X 160mm (3.9" X 1.4" X 6.3") Refer to Outline Drawing			

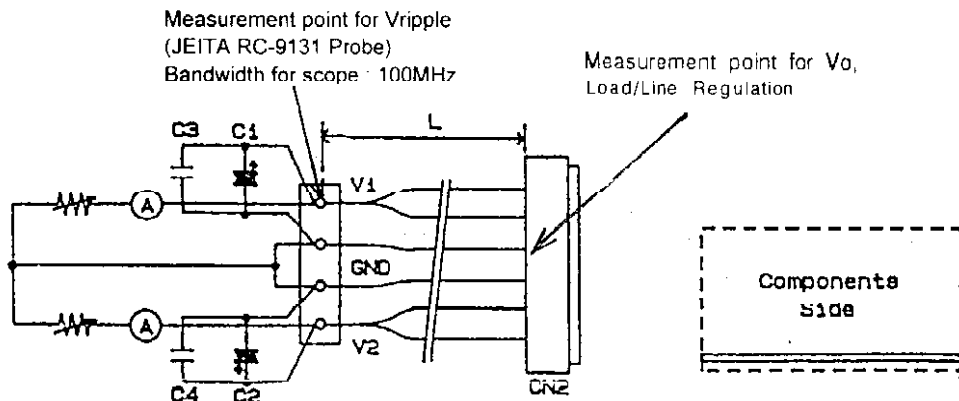
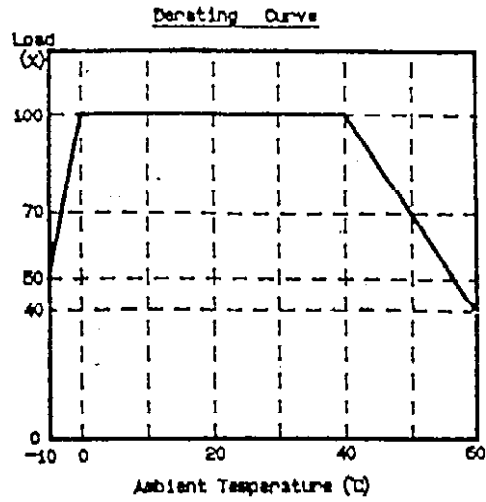
NOTES :

- *1 : Operating time at peak output is less than 5 sec.
- *2 : At 100VAC / 200VAC & Average Output Power.
- *3 : For cases where conformance to various safety specs (UL, CSA, VDE) are required, to be described as 100-120VAC, 200 - 240VAC, 50 / 60Hz on name plate.
- *4 : Typical value on cold start, $T_a = 25^{\circ}\text{C}$.
- *5 : From 85 ~ 132VAC or 170 ~ 265VAC, constant load.
- *6 : From Min Load ~ Full Load (Average Current and Power), Constant Input Voltage.
- *7 : From -10 ~ 50°C, constant input voltage and load.
- *8 : Current limiting with automatic recovery. Avoid to operate over load or dead short for long time.
- *9 : OVP circuit will shutdown all outputs, manual reset.
- *10 : Please refer to FIG. A for measurement determination of Line & Load Regulation and Output Ripple Voltage.
- *11 : Rating - Refer to Derating Curve on the right. (At standard mounting method, FIG. B)
 - Load (%) is percent of Average Output Power or Average Current, whichever is greater.
 - Refer to Instruction Manual for further mounting details.

SPECIFICATIONS

PA790-01-02 A

MODEL : ZWD75



Measurement point for Vripple
(JEITA RC-9131 Probe)
Bandwidth for scope : 100MHz

Measurement point for Vo,
Load/Line Regulation

Fig A

Fig B

- L = 150mm. AWG # 20 (Single Wire)
- C1 : Electrolytic Cap. 1000µF
- C2 : Electrolytic Cap. 100µF
- C3,C4 : Film cap. 0.1µF