

---

Material name : Evaluation data

---

Customer's product name :

---

TDK product name : DC-DC converter  
CC15-2405SF-E , CC15-2405SR-E

---

# ***TDK-Lambda***

**TDK Corporation**  
**Power Systems Business Group**

DWG.No.	TRSC-1551-2
---------	-------------

Revised 2006/12/01

# INDEX

1. Load regulation.....	P2
2. Line regulation.....	P2
3. Efficiency.....	P3
4. Switching frequency vs. output power.....	P3
5. Over current protection characteristics.....	P4
6. Output rise characteristics.....	P5
7. Output fall characteristics.....	P6
8. Dynamic load response characteristics.....	P7
9. Inrush current waveform.....	P7
10. Temperature distribution.....	P8

\* The measurement has been done without external output capacitor.

(Product specification)

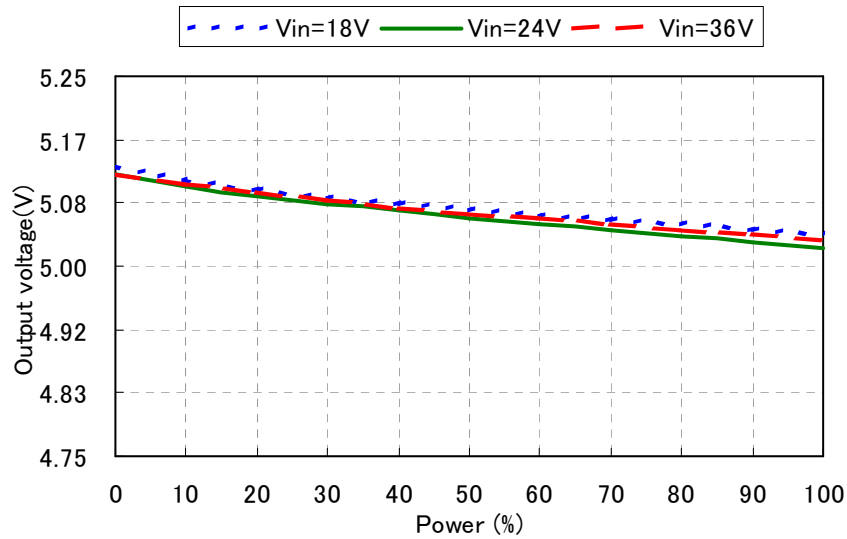
Product name	Input voltage(V)	Output voltage(V)	Output current(mA)	The maximum output power(W)	Ambient temperature(°C)
CC15-2405SF-E CC15-2405SR-E	18~36	5 +5% , -3%	0~3000	15	-40 ~ +85 *1

\*1 At 50°C or more, output power derating is necessary.

TDK CORPORATION	Product name or model, title		
	DC-DC converter CC15-2405SF-E , CC15-2405SR-E		
	Name of drawing	Drawing No.	PAGE
	Evaluation data	TRSC-1551-2	<b>1 / 8</b>

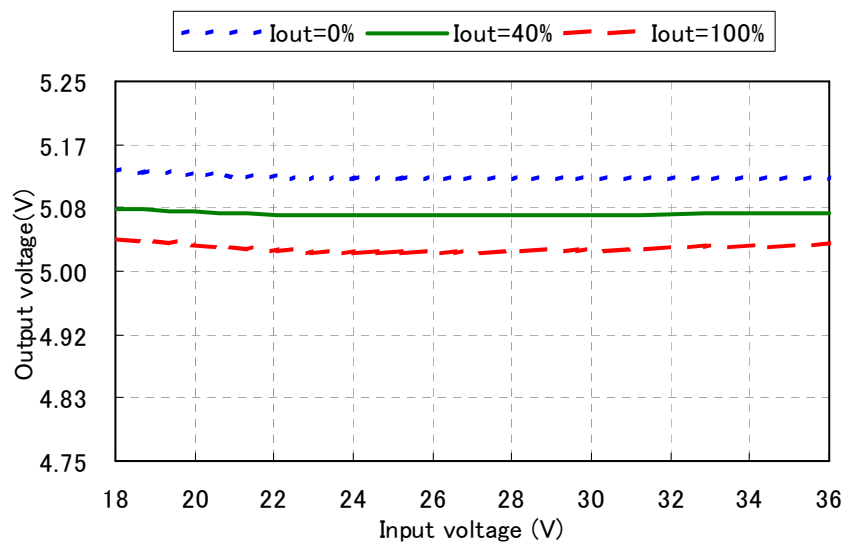
# 1. Load regulation

Condition Ta : 25°C



# 2. Line regulation

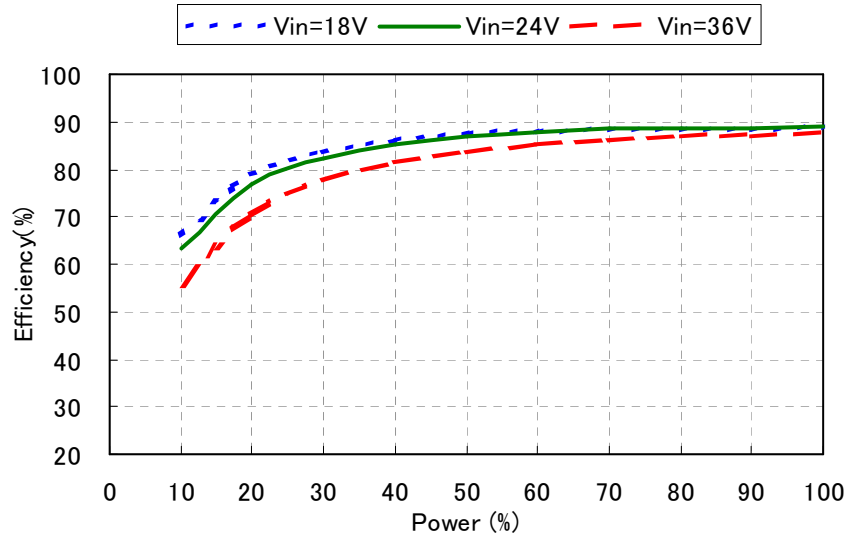
Condition Ta : 25°C



Product name or model, title			
DC-DC converter CC15-2405SF-E , CC15-2405SR-E			
TDK CORPORATION	Name of drawing	Drawing No.	PAGE
	Evaluation data	TRSC-1551-2	2 / 8

### 3. Efficiency

Condition Ta : 25°C



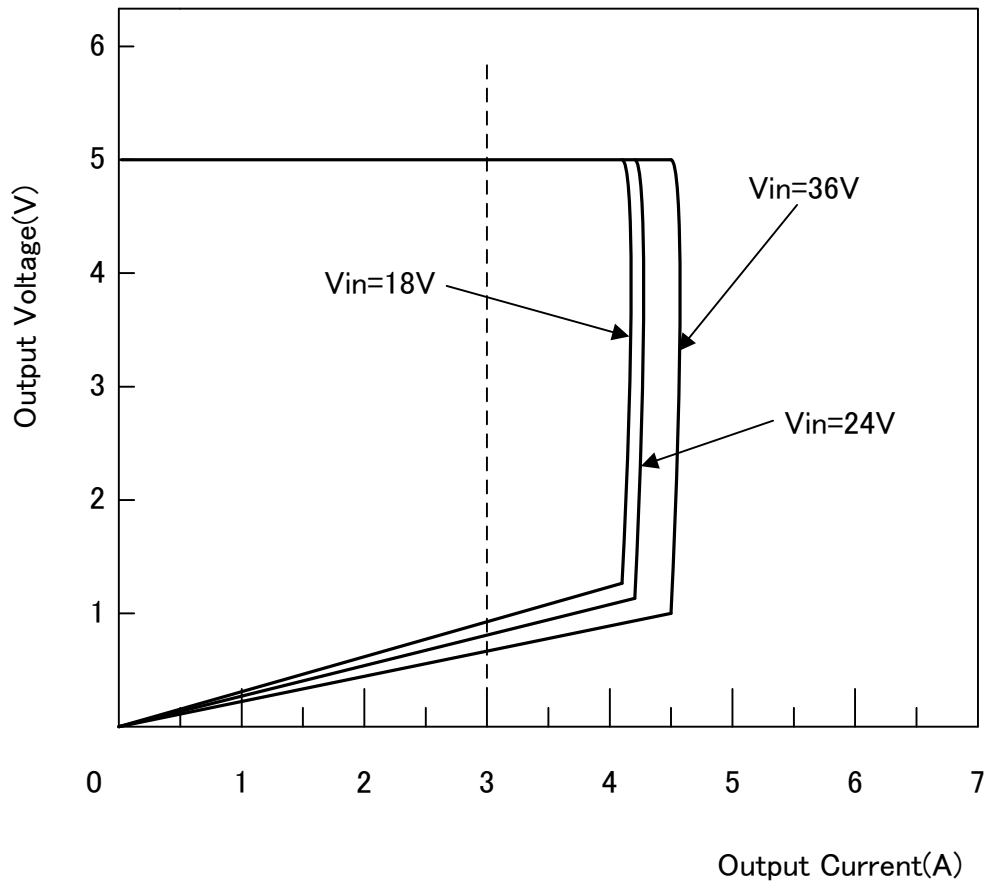
### 4. Switching frequency vs. output power

Swiching frequency : 520kHz (Fix)

Product name or model, title			
DC-DC converter CC15-2405SF-E , CC15-2405SR-E			
TDK CORPORATION	Name of drawing	Drawing No.	PAGE
	Evaluation data	TRSC-1551-2	3/ 8

## 5. Over current protection characteristics

Condition Ta : 25°C

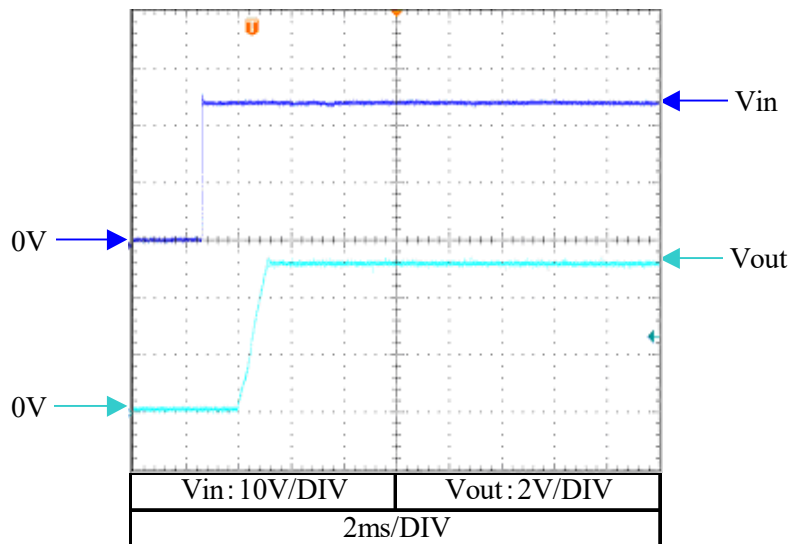


Product name or model, title			
DC-DC converter CC15-2405SF-E , CC15-2405SR-E			
TDK CORPORATION	Name of drawing	Drawing No.	PAGE
	Evaluation data	TRSC-1551-2	4/ 8

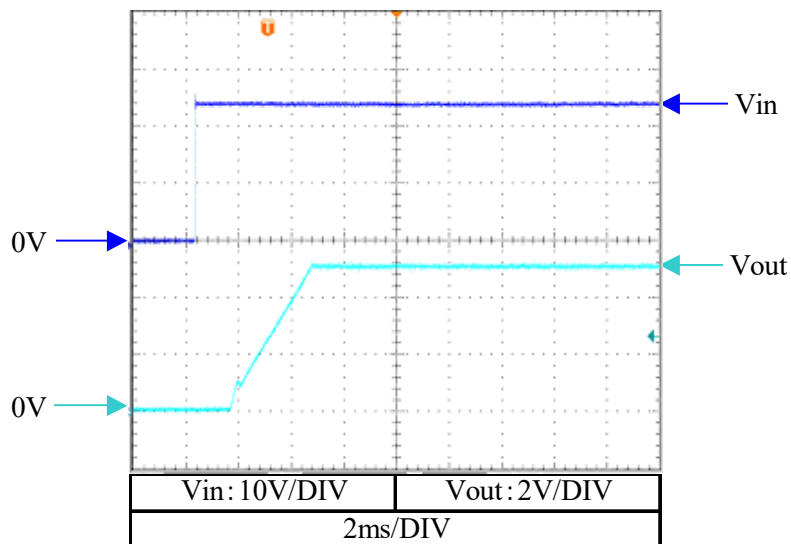
## 6. Output rise characteristics

Condition       $V_{in}$  : 24V  
                      $T_a$  : 25°C

$I_{out}$  : 0%



$I_{out}$  : 100%



Product name or model, title

DC-DC converter CC15-2405SF-E , CC15-2405SR-E

TDK CORPORATION

Name of drawing

Drawing No.

PAGE

Evaluation data

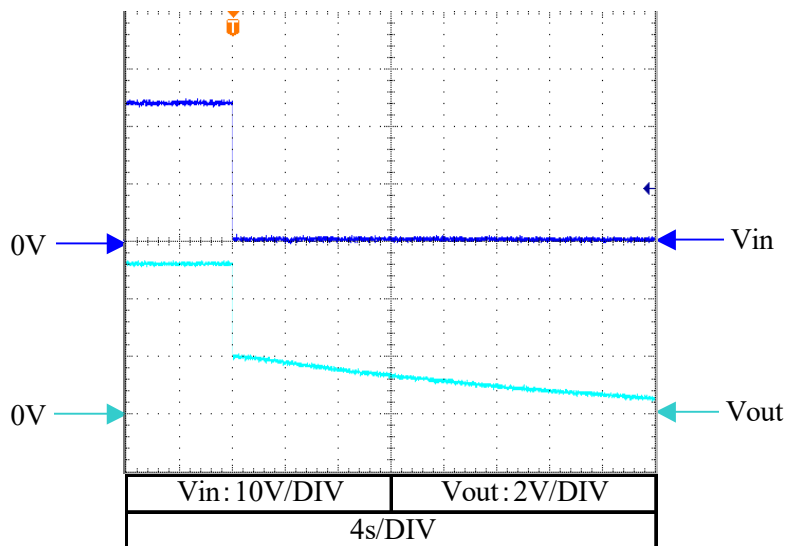
TRSC-1551-2

5/ 8

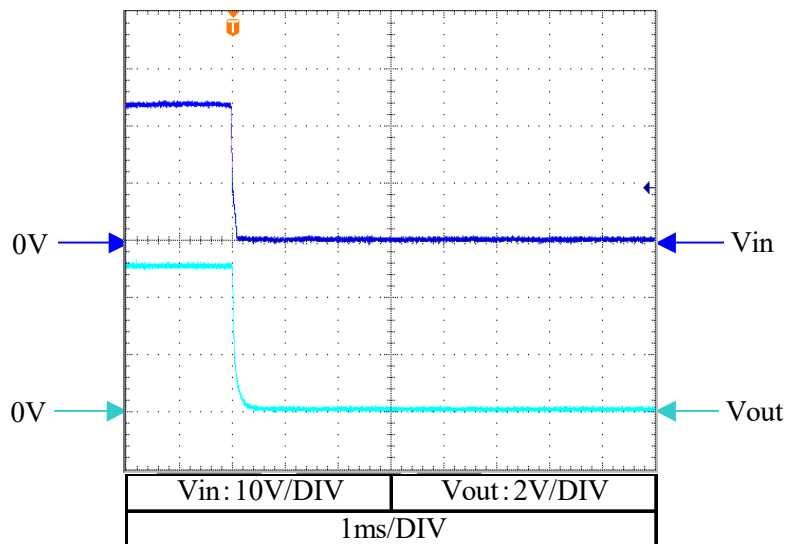
## 7. Output fall characteristics

Condition       $V_{in}$  : 24V  
                      $T_a$  : 25°C

$I_{out}$  : 0%



$I_{out}$  : 100%



Product name or model, title

DC-DC converter CC15-2405SF-E , CC15-2405SR-E

TDK CORPORATION

Name of drawing

Drawing No.

PAGE

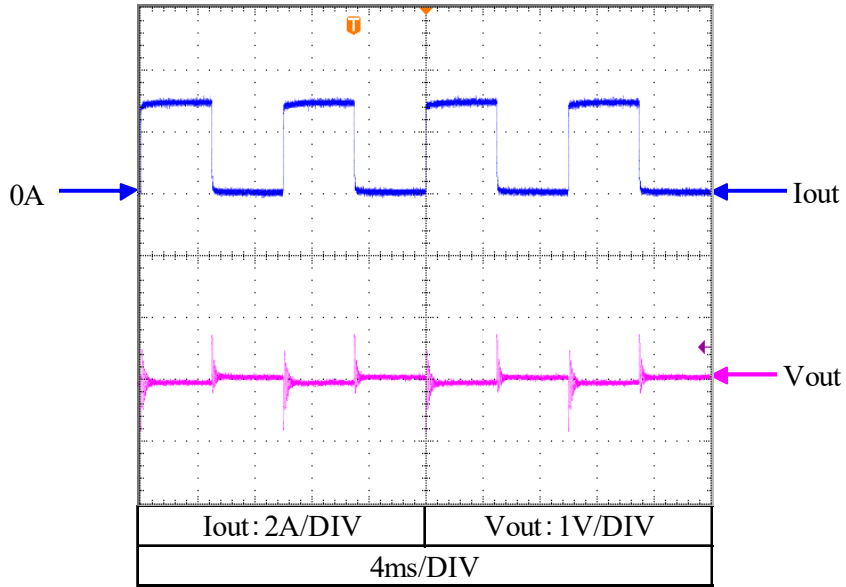
Evaluation data

TRSC-1551-2

6 / 8

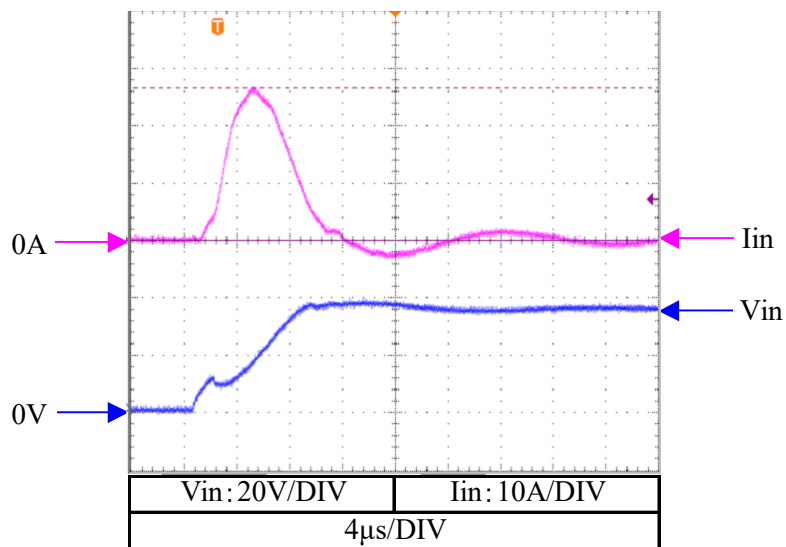
## 8. Dynamic load response characteristics

Condition  
 Vin : 24V  
 Vout : 5V  
 Iout : 0%  $\leftrightarrow$  100%  
 Tr=Tf : 100  $\mu$ s  
 f : 100Hz  
 Ta : 25°C



## 9. Inrush current waveform

Condition  
 Vin : 36V  
 Iout : 100%  
 Ta : 25°C



Product name or model, title

DC-DC converter CC15-2405SF-E , CC15-2405SR-E

TDK CORPORATION

Name of drawing

Drawing No.

PAGE

Evaluation data

TRSC-1551-2

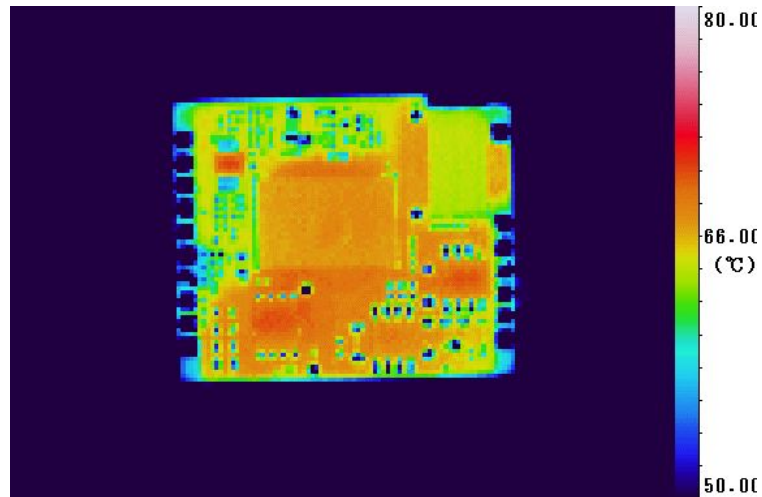
7/ 8



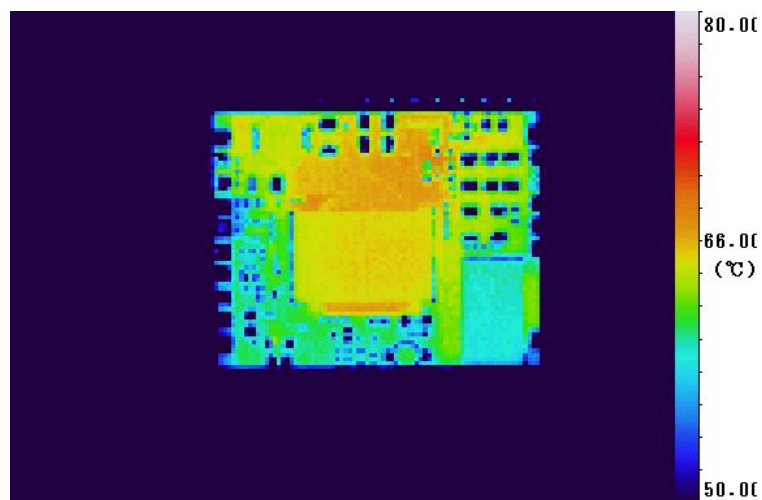
# 10. Temperature distribution

Condition      Vin : 24V  
                   Vout : 5V  
                   Iout : 100%  
                   Ta : 25°C  
                   Wind velocity : 0m/s

Top View



Bottom View



(\*) •This test was done on our evaluation board. (Glass epoxy substrate, Size:100x100x1.6mm)  
 •We measured the temperatures of parts without the case by using the thermography.  
 Therefore, it might be different a little from the actual temperature.

	Product name or model, title		
	DC-DC converter CC15-2405SF-E , CC15-2405SR-E		
TDK CORPORATION	Name of drawing	Drawing No.	PAGE
	Evaluation data	TRSC-1551-2	8 / 8