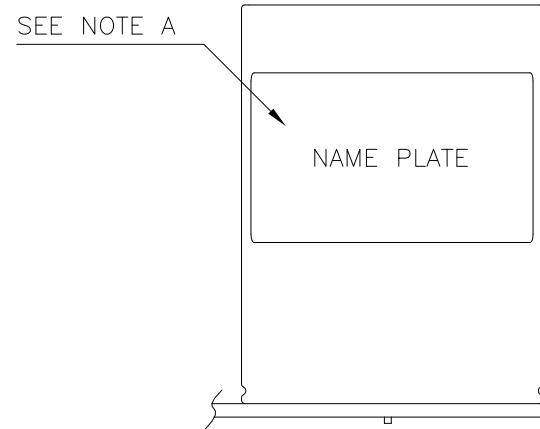


CONNECTORS USED :

PART DESCRIPTION	PART NAME	MANUFACT.	QTY
PIN HEADER (CN1 & CN2)	B6P-VH(LF)(SN)	J.S.T.	2
PIN HEADER (CN3)	B6B-XH-A(LF)(SN)	J.S.T.	1

MATCHING HOUSINGS, PINS & TOOL (NOT INCLUDED WITH THE PRODUCT):

PART DESCRIPTION	PART NAME	MANUFACT.	QTY
SOCKET HOUSING (CN1 & CN2)	VHR-6N	J.S.T.	2
SOCKET HOUSING (CN3)	XHP-6	J.S.T.	1
TERMINAL PINS	SVH-41T-P1.1	J.S.T.	12
TERMINAL PINS	SXH-002T-P0.6	J.S.T.	6



NAME PLATE PLACEMENT

NOTES

- A. MODEL NAME, INPUT VOLTAGE RANGE, NOMINAL OUTPUT VOLTAGE, MAXIMUM OUTPUT CURRENT, BUFFER TIME, COUNTRY OF MANUFACTURE AND SAFETY MARKING (FOR ONLY APPROVED PRODUCTS) ARE SHOWN HERE IN ACCORDANCE WITH THE SPECIFICATIONS.
- B. 5- $\phi$ 3.2 HOLES ARE FOR CUSTOMER'S CHASSIS MOUNTING HOLE.
- C. SWITCH IS SELECTED TO FIXED MODE BEFORE SHIPMENT. (SWITCH IS FOR 24V ONLY).

(unit : mm)

MODEL NAME	ZBM20/T
<b>TDK-Lambda</b>	

PA642-02-01/T-B