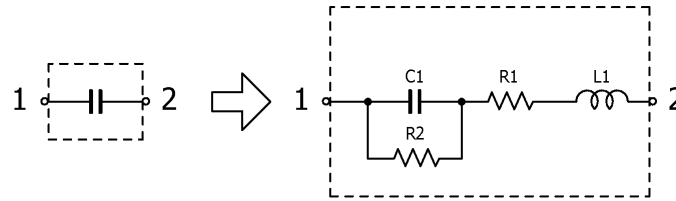


## Multilayer Ceramic Chip Capacitors

Feb. 27, 2026  
Simple Model

### Automotive Grade Soft Termination / CGA4 series (1/4)

#### Circuit Diagram



#### Circuit Parameters

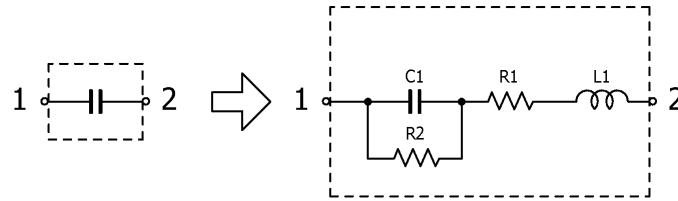
Part No.	C1[ $\mu$ F]	L1[nH]	R1[ $\Omega$ ]	R2[Gohm]
CGA4F2C0G1H153J085AE	15,000	0.480	0.0150	10.0
CGA4J2C0G1H223J125AE	22,000	0.480	0.0157	10.0
CGA4J2C0G1H333J125AE	33,000	0.480	0.0130	10.0
CGA4F1C0G2A153J085AE	15,000	0.480	0.0150	10.0
CGA4J1C0G2A223J125AE	22,000	0.480	0.0157	10.0
CGA4J1C0G2A333J125AE	33,000	0.480	0.0130	10.0
CGA4F3C0G2E332J085AE	3,300	0.480	0.0273	10.0
CGA4J3C0G2E392J125AE	3,900	0.480	0.0245	10.0
CGA4J3C0G2E472J125AE	4,700	0.480	0.0235	10.0
CGA4J3C0G2E562J125AE	5,600	0.480	0.0231	10.0
CGA4J3C0G2E682J125AE	6,800	0.480	0.0197	10.0
CGA4C4C0G2W101J060AE	100	0.480	0.1984	10.0
CGA4C4C0G2W151J060AE	150	0.480	0.1193	10.0
CGA4C4C0G2W221J060AE	220	0.480	0.1358	10.0
CGA4C4C0G2W331J060AE	330	0.480	0.1055	10.0
CGA4C4C0G2W471J060AE	470	0.480	0.0853	10.0
CGA4C4C0G2W681J060AE	680	0.480	0.0531	10.0
CGA4C4C0G2W102J060AE	1,000	0.480	0.0478	10.0
CGA4C4C0G2W122J060AE	1,200	0.480	0.0436	10.0
CGA4F4C0G2W152J085AE	1,500	0.480	0.0384	10.0
CGA4F4C0G2W182J085AE	1,800	0.480	0.0184	10.0
CGA4F4C0G2W222J085AE	2,200	0.480	0.0319	10.0
CGA4J4C0G2W272J125AE	2,700	0.480	0.0295	10.0
CGA4J4C0G2W332J125AE	3,300	0.480	0.0260	10.0
CGA4J4C0G2W392J125AE	3,900	0.480	0.0245	10.0
CGA4J1X7R0J106K125AE	10,000,000	0.480	0.0035	0.0100
CGA4J3X7R1C475K125AE	4,700,000	0.480	0.0051	0.106
CGA4J3X7R1C475M125AE	4,700,000	0.480	0.0051	0.106
CGA4J3X7R1E225K125AE	2,200,000	0.480	0.0067	0.227
CGA4J3X7R1E225M125AE	2,200,000	0.480	0.0067	0.227
CGA4J1X7R1E475K125AE	4,700,000	0.480	0.0051	0.106
CGA4J1X7R1E475M125AE	4,700,000	0.480	0.0051	0.106
CGA4J3X7R1V105K125AE	1,000,000	0.480	0.0062	0.500
CGA4J3X7R1V105M125AE	1,000,000	0.480	0.0111	0.500
CGA4J1X7R1V225K125AE	2,200,000	0.480	0.0127	0.227
CGA4J1X7R1V225M125AE	2,200,000	0.480	0.0127	0.227

## Multilayer Ceramic Chip Capacitors

Feb. 27, 2026  
Simple Model

### Automotive Grade Soft Termination / CGA4 series (2/4)

#### Circuit Diagram



#### Circuit Parameters

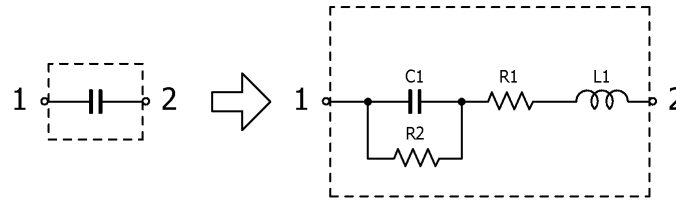
Part No.	C1[pF]	L1[nH]	R1[ohm]	R2[Gohm]
CGA4J1X7R1V475K125AE	4,700,000	0.480	0.0052	0.106
CGA4J1X7R1V475M125AE	4,700,000	0.480	0.0052	0.106
CGA4J2X7R1H104K125AE	100,000	0.480	0.0217	5.00
CGA4J2X7R1H104M125AE	100,000	0.480	0.0217	5.00
CGA4J2X7R1H224K125AE	220,000	0.480	0.0136	2.27
CGA4J2X7R1H224M125AE	220,000	0.480	0.0136	2.27
CGA4J3X7R1H474K125AE	470,000	0.480	0.0091	1.06
CGA4J3X7R1H474M125AE	470,000	0.480	0.0091	1.06
CGA4J3X7R1H105K125AE	1,000,000	0.480	0.0062	0.500
CGA4J3X7R1H105M125AE	1,000,000	0.480	0.0062	0.500
CGA4J3X7R1H225K125AE	2,200,000	0.480	0.0064	0.227
CGA4J3X7R1H225M125AE	2,200,000	0.480	0.0064	0.227
CGA4J1X7R1H475K125AE	4,700,000	0.480	0.0051	0.106
CGA4F2X7R2A102K085AE	1,000	0.480	0.2806	10.0
CGA4F2X7R2A102M085AE	1,000	0.480	0.2806	10.0
CGA4F2X7R2A222K085AE	2,200	0.480	0.2040	10.0
CGA4F2X7R2A222M085AE	2,200	0.480	0.2040	10.0
CGA4F2X7R2A472K085AE	4,700	0.480	0.1199	10.0
CGA4F2X7R2A472M085AE	4,700	0.480	0.1199	10.0
CGA4F2X7R2A103K085AE	10,000	0.480	0.0589	10.0
CGA4F2X7R2A103M085AE	10,000	0.480	0.0589	10.0
CGA4J2X7R2A223K125AE	22,000	0.480	0.0304	10.0
CGA4J2X7R2A223M125AE	22,000	0.480	0.0304	10.0
CGA4J2X7R2A473K125AE	47,000	0.480	0.0230	10.0
CGA4J2X7R2A473M125AE	47,000	0.480	0.0230	10.0
CGA4J2X7R2A104K125AE	100,000	0.480	0.0177	5.00
CGA4J2X7R2A104M125AE	100,000	0.480	0.0177	5.00
CGA4F3X7R2E102K085AE	1,000	0.480	0.2806	10.0
CGA4F3X7R2E102M085AE	1,000	0.480	0.2806	10.0
CGA4F3X7R2E222K085AE	2,200	0.480	0.2040	10.0
CGA4F3X7R2E222M085AE	2,200	0.480	0.2040	10.0
CGA4F3X7R2E472K085AE	4,700	0.480	0.1199	10.0
CGA4F3X7R2E472M085AE	4,700	0.480	0.1199	10.0
CGA4J3X7R2E103K125AE	10,000	0.480	0.0857	10.0
CGA4J3X7R2E103M125AE	10,000	0.480	0.0857	10.0
CGA4J3X7R2E223K125AE	22,000	0.480	0.0653	10.0

## Multilayer Ceramic Chip Capacitors

Feb. 27, 2026  
Simple Model

### Automotive Grade Soft Termination / CGA4 series (3/4)

#### Circuit Diagram



#### Circuit Parameters

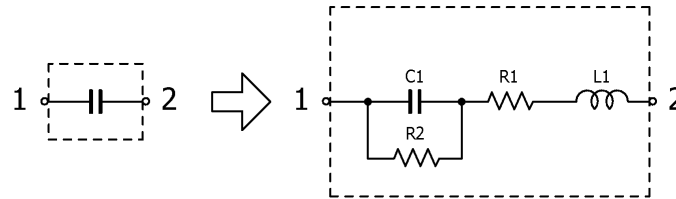
Part No.	C1[ $\mu$ F]	L1[nH]	R1[ohm]	R2[Gohm]
CGA4J3X7R2E223M125AE	22,000	0.480	0.0653	10.0
CGA4J3X7S1A106K125AE	10,000,000	0.480	0.0047	0.0100
CGA4J3X7S1A106M125AE	10,000,000	0.480	0.0047	0.0100
CGA4J1X7S1C106K125AE	10,000,000	0.480	0.0047	0.0100
CGA4J1X7S1C106M125AE	10,000,000	0.480	0.0047	0.0100
CGA4J1X7S1E106K125AE	10,000,000	0.480	0.0040	0.0500
CGA4J1X7S1N105K125AE	1,000,000	0.480	0.0073	0.500
CGA4F3X7S2A224K085AE	220,000	0.480	0.0416	2.27
CGA4F3X7S2A224M085AE	220,000	0.480	0.0416	2.27
CGA4J3X7S2A474K125AE	470,000	0.480	0.0104	1.06
CGA4J3X7S2A474M125AE	470,000	0.480	0.0104	1.06
CGA4J3X7S2A105K125AE	1,000,000	0.480	0.0078	0.500
CGA4J3X7S2A105M125AE	1,000,000	0.480	0.0078	0.500
CGA4J3X7T2E473K125AE	47,000	0.480	0.0280	10.0
CGA4J3X7T2E473M125AE	47,000	0.480	0.0280	10.0
CGA4J3X7T2E104K125AE	100,000	0.480	0.0198	5.00
CGA4J3X7T2E104M125AE	100,000	0.480	0.0198	5.00
CGA4F4X7T2W103K085AE	10,000	0.480	0.0737	10.0
CGA4F4X7T2W103M085AE	10,000	0.480	0.0737	10.0
CGA4J4X7T2W223K125AE	22,000	0.480	0.0588	10.0
CGA4J4X7T2W223M125AE	22,000	0.480	0.0588	10.0
CGA4J4X7T2W473K125AE	47,000	0.480	0.0280	10.0
CGA4J4X7T2W473M125AE	47,000	0.480	0.0280	10.0
CGA4J1X8L1A106K125AE	10,000,000	0.480	0.0040	0.0100
CGA4J1X8L1E475K125AE	4,700,000	0.480	0.0051	0.106
CGA4J1X8L1V225K125AE	2,200,000	0.480	0.0064	0.227
CGA4J1X8L1H474K125AE	470,000	0.480	0.0104	1.06
CGA4J1X8L1H105K125AE	1,000,000	0.480	0.0078	0.500
CGA4J3X8R1C684K125AE	680,000	0.480	0.0097	0.147
CGA4J3X8R1C684M125AE	680,000	0.480	0.0097	0.147
CGA4J3X8R1C105K125AE	1,000,000	0.480	0.0077	0.100
CGA4J3X8R1C105M125AE	1,000,000	0.480	0.0077	0.100
CGA4F2X8R1E154K085AE	150,000	0.480	0.0211	3.33
CGA4F2X8R1E154M085AE	150,000	0.480	0.0211	3.33
CGA4J2X8R1E224K125AE	220,000	0.480	0.0145	2.27
CGA4J2X8R1E224M125AE	220,000	0.480	0.0145	2.27

## Multilayer Ceramic Chip Capacitors

Feb. 27, 2026  
Simple Model

Automotive Grade Soft Termination / CGA4 series (4/4)

### Circuit Diagram



### Circuit Parameters

Part No.	C1[pF]	L1[nH]	R1[ohm]	R2[Gohm]
CGA4J2X8R1E334K125AE	330,000	0.480	0.0096	1.52
CGA4J2X8R1E334M125AE	330,000	0.480	0.0096	1.52
CGA4J3X8R1E474K125AE	470,000	0.480	0.0092	1.06
CGA4J3X8R1E474M125AE	470,000	0.480	0.0092	1.06
CGA4J1X8R1E684K125AE	680,000	0.480	0.0097	0.147
CGA4J1X8R1E684M125AE	680,000	0.480	0.0097	0.147
CGA4J1X8R1E105K125AE	1,000,000	0.480	0.0077	0.100
CGA4J1X8R1E105M125AE	1,000,000	0.480	0.0077	0.100
CGA4J2X8R1H104K125AE	100,000	0.480	0.0147	5.00
CGA4J2X8R1H104M125AE	100,000	0.480	0.0147	5.00
CGA4J3X8R1H154K125AE	150,000	0.480	0.0207	3.33
CGA4J3X8R1H154M125AE	150,000	0.480	0.0207	3.33
CGA4J3X8R1H224K125AE	220,000	0.480	0.0155	2.27
CGA4J3X8R1H224M125AE	220,000	0.480	0.0155	2.27
CGA4J2X8R2A223K125AE	22,000	0.480	0.0304	10.0
CGA4J2X8R2A223M125AE	22,000	0.480	0.0304	10.0
CGA4J3X8R2A473K125AE	47,000	0.480	0.0325	10.0
CGA4J3X8R2A473M125AE	47,000	0.480	0.0325	10.0
CGA4J3X8R2A683K125AE	68,000	0.480	0.0258	7.35
CGA4J3X8R2A683M125AE	68,000	0.480	0.0258	7.35