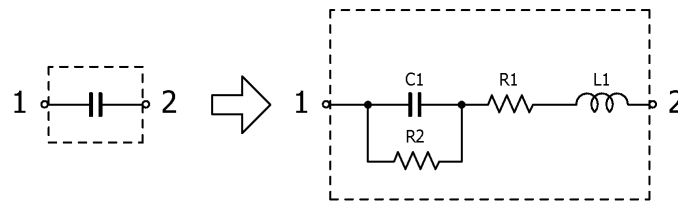


Multilayer Ceramic Chip Capacitors

Feb. 27, 2026
Simple Model

Automotive Grade Soft Termination / CGA5 series (1/3)

Circuit Diagram



Circuit Parameters

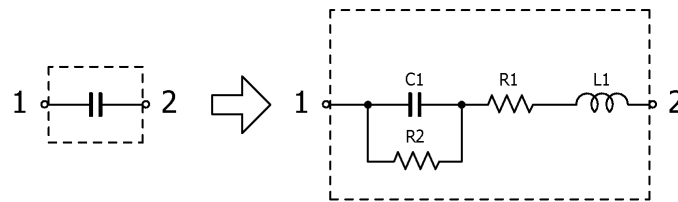
Part No.	C1[μ F]	L1[nH]	R1[ohm]	R2[Gohm]
CGA5H2C0G1H473J115AE	47,000	0.750	0.0091	10.0
CGA5L2C0G1H683J160AE	68,000	0.750	0.0102	7.35
CGA5L2C0G1H104J160AE	100,000	0.750	0.0072	5.00
CGA5H1C0G2A473J115AE	47,000	0.750	0.0091	10.0
CGA5L1C0G2A683J160AE	68,000	0.750	0.0102	7.35
CGA5L1C0G2A104J160AE	100,000	0.750	0.0072	5.00
CGA5H3C0G2E103J115AE	10,000	0.750	0.0134	10.0
CGA5L3C0G2E153J160AE	15,000	0.750	0.0109	10.0
CGA5H4C0G2W682J115AE	6,800	0.750	0.0132	10.0
CGA5H4C0G2W822J115AE	8,200	0.750	0.0131	10.0
CGA5L4C0G2W103J160AE	10,000	0.750	0.0145	10.0
CGA5F4C0G2J392G085AE	3,900	0.750	0.0187	10.0
CGA5F4C0G2J392J085AE	3,900	0.750	0.0187	10.0
CGA5H4C0G2J562G115AE	5,600	0.750	0.0153	10.0
CGA5H4C0G2J562J115AE	5,600	0.750	0.0153	10.0
CGA5H4C0G2J682G115AE	6,800	0.750	0.0132	10.0
CGA5H4C0G2J682J115AE	6,800	0.750	0.0132	10.0
CGA5L4C0G2J822G160AE	8,200	0.750	0.0124	10.0
CGA5L4C0G2J822J160AE	8,200	0.750	0.0124	10.0
CGA5L4C0G2J103G160AE	10,000	0.750	0.0145	10.0
CGA5L4C0G2J103J160AE	10,000	0.750	0.0145	10.0
CGA5L1X7R0J226M160AE	22,000,000	0.750	0.0037	0.00400
CGA5L2X7R1E225K160AE	2,200,000	0.750	0.0072	0.227
CGA5L2X7R1E225M160AE	2,200,000	0.750	0.0072	0.227
CGA5L1X7R1E106K160AE	10,000,000	0.750	0.0037	0.0500
CGA5L1X7R1E106M160AE	10,000,000	0.750	0.0037	0.0500
CGA5L3X7R1V225K160AE	2,200,000	0.750	0.0141	0.227
CGA5L3X7R1V225M160AE	2,200,000	0.750	0.0141	0.227
CGA5L1X7R1V475K160AE	4,700,000	0.750	0.0037	0.106
CGA5L1X7R1V475M160AE	4,700,000	0.750	0.0037	0.106
CGA5L1X7R1V106K160AE	10,000,000	0.750	0.0040	0.0500
CGA5L1X7R1V106M160AE	10,000,000	0.750	0.0040	0.0500
CGA5L3X7R1H105K160AE	1,000,000	0.750	0.0110	0.500
CGA5L3X7R1H105M160AE	1,000,000	0.750	0.0110	0.500
CGA5L3X7R1H225K160AE	2,200,000	0.750	0.0055	0.227
CGA5L3X7R1H225M160AE	2,200,000	0.750	0.0055	0.227

Multilayer Ceramic Chip Capacitors

Feb. 27, 2026
Simple Model

Automotive Grade Soft Termination / CGA5 series (2/3)

Circuit Diagram



Circuit Parameters

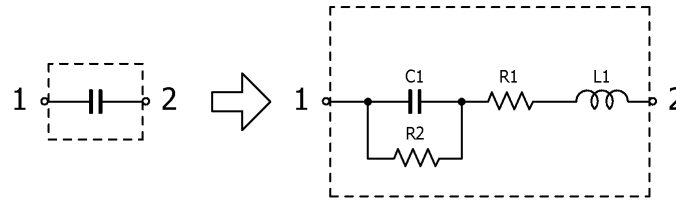
Part No.	C1[pF]	L1[nH]	R1[ohm]	R2[Gohm]
CGA5L3X7R1H475K160AE	4,700,000	0.750	0.0060	0.106
CGA5L3X7R1H475M160AE	4,700,000	0.750	0.0060	0.106
CGA5L1X7R1H106K160AE	10,000,000	0.750	0.0042	0.0500
CGA5L2X7R2A104K160AE	100,000	0.750	0.0232	5.00
CGA5L2X7R2A104M160AE	100,000	0.750	0.0232	5.00
CGA5H2X7R2A224K115AE	220,000	0.750	0.0152	2.27
CGA5H2X7R2A224M115AE	220,000	0.750	0.0152	2.27
CGA5L2X7R2A474K160AE	470,000	0.750	0.0148	1.06
CGA5L2X7R2A474M160AE	470,000	0.750	0.0148	1.06
CGA5L2X7R2A105K160AE	1,000,000	0.750	0.0108	0.500
CGA5L2X7R2A105M160AE	1,000,000	0.750	0.0108	0.500
CGA5H3X7R2E223K115AE	22,000	0.750	0.0633	10.0
CGA5H3X7R2E223M115AE	22,000	0.750	0.0633	10.0
CGA5L3X7R2E473K160AE	47,000	0.750	0.0350	10.0
CGA5L3X7R2E473M160AE	47,000	0.750	0.0350	10.0
CGA5L3X7R2E104K160AE	100,000	0.750	0.0266	5.00
CGA5L3X7R2E104M160AE	100,000	0.750	0.0266	5.00
CGA5H4X7R2J102K115AE	1,000	0.750	0.2588	10.0
CGA5H4X7R2J102M115AE	1,000	0.750	0.2588	10.0
CGA5H4X7R2J222K115AE	2,200	0.750	0.1524	10.0
CGA5H4X7R2J222M115AE	2,200	0.750	0.1524	10.0
CGA5H4X7R2J472K115AE	4,700	0.750	0.0979	10.0
CGA5H4X7R2J472M115AE	4,700	0.750	0.0979	10.0
CGA5H4X7R2J103K115AE	10,000	0.750	0.1061	10.0
CGA5H4X7R2J103M115AE	10,000	0.750	0.1061	10.0
CGA5K4X7R2J223K130AE	22,000	0.750	0.0604	10.0
CGA5K4X7R2J223M130AE	22,000	0.750	0.0604	10.0
CGA5L4X7R2J333K160AE	33,000	0.750	0.0426	10.0
CGA5L4X7R2J333M160AE	33,000	0.750	0.0426	10.0
CGA5L1X7S1N225K160AE	2,200,000	0.750	0.0061	0.227
CGA5L3X7S2A225K160AE	2,200,000	0.750	0.0175	0.227
CGA5L3X7S2A225M160AE	2,200,000	0.750	0.0175	0.227
CGA5L3X7T2E224K160AE	220,000	0.750	0.0159	2.27
CGA5L3X7T2E224M160AE	220,000	0.750	0.0159	2.27
CGA5L4X7T2W104K160AE	100,000	0.750	0.0175	5.00
CGA5L4X7T2W104M160AE	100,000	0.750	0.0175	5.00

Multilayer Ceramic Chip Capacitors

Feb. 27, 2026
Simple Model

Automotive Grade Soft Termination / CGA5 series (3/3)

Circuit Diagram



Circuit Parameters

Part No.	C1[μ F]	L1[nH]	R1[ohm]	R2[Gohm]
CGA5L1X7T2J473K160AE	47,000	0.750	0.0304	10.0
CGA5L1X7T2J473M160AE	47,000	0.750	0.0304	10.0
CGA5L1X8L1E106K160AE	10,000,000	0.750	0.0042	0.0500
CGA5L3X8R1C335K160AE	3,300,000	0.750	0.0056	0.0300
CGA5L3X8R1C335M160AE	3,300,000	0.750	0.0056	0.0300
CGA5L3X8R1C475K160AE	4,700,000	0.750	0.0059	0.0210
CGA5L3X8R1C475M160AE	4,700,000	0.750	0.0059	0.0210
CGA5L2X8R1E105K160AE	1,000,000	0.750	0.0093	0.500
CGA5L2X8R1E105M160AE	1,000,000	0.750	0.0093	0.500
CGA5L3X8R1E155K160AE	1,500,000	0.750	0.0091	0.333
CGA5L3X8R1E155M160AE	1,500,000	0.750	0.0091	0.333
CGA5L3X8R1E225K160AE	2,200,000	0.750	0.0068	0.227
CGA5L3X8R1E225M160AE	2,200,000	0.750	0.0068	0.227
CGA5L1X8R1E335K160AE	3,300,000	0.750	0.0056	0.0300
CGA5L1X8R1E335M160AE	3,300,000	0.750	0.0056	0.0300
CGA5L1X8R1E475K160AE	4,700,000	0.750	0.0059	0.0210
CGA5L1X8R1E475M160AE	4,700,000	0.750	0.0059	0.0210
CGA5L2X8R1H334K160AE	330,000	0.750	0.0137	1.52
CGA5L2X8R1H334M160AE	330,000	0.750	0.0137	1.52
CGA5L2X8R1H474K160AE	470,000	0.750	0.0096	1.06
CGA5L2X8R1H474M160AE	470,000	0.750	0.0096	1.06
CGA5L3X8R1H684K160AE	680,000	0.750	0.0102	0.735
CGA5L3X8R1H684M160AE	680,000	0.750	0.0102	0.735
CGA5L3X8R1H105K160AE	1,000,000	0.750	0.0077	0.500
CGA5L3X8R1H105M160AE	1,000,000	0.750	0.0077	0.500
CGA5H2X8R2A104K115AE	100,000	0.750	0.0233	5.00
CGA5H2X8R2A104M115AE	100,000	0.750	0.0233	5.00
CGA5L2X8R2A154K160AE	150,000	0.750	0.0182	3.33
CGA5L2X8R2A154M160AE	150,000	0.750	0.0182	3.33
CGA5L3X8R2A224K160AE	220,000	0.750	0.0180	2.27
CGA5L3X8R2A224M160AE	220,000	0.750	0.0180	2.27
CGA5L3X8R2A334K160AE	330,000	0.750	0.0149	1.52
CGA5L3X8R2A334M160AE	330,000	0.750	0.0149	1.52