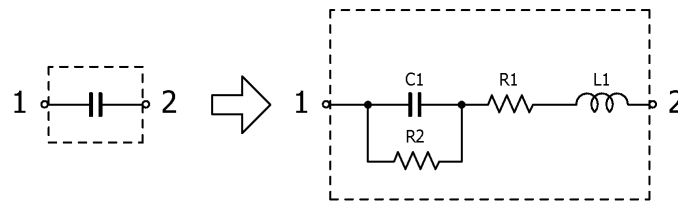


Multilayer Ceramic Chip Capacitors

Feb. 27, 2026
Simple Model

Commercial Grade General (Up to 75V) / C2012 series (1/10)

Circuit Diagram



Circuit Parameters

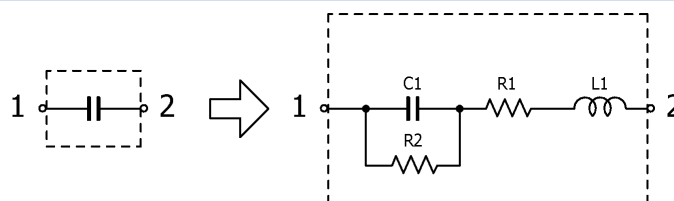
Part No.	C1[pF]	L1[nH]	R1[ohm]	R2[Gohm]
C2012C0G1E103J060AA	10,000	0.480	0.0370	10.0
C2012C0G1E223J125AA	22,000	0.480	0.0146	10.0
C2012C0G1E333J125AA	33,000	0.480	0.0114	10.0
C2012C0G1V223J060AC	22,000	0.480	0.0131	10.0
C2012C0G1H102J060AA	1,000	0.480	0.0399	10.0
C2012C0G1H102K060AA	1,000	0.480	0.0399	10.0
C2012C0G1H152J060AA	1,500	0.480	0.0356	10.0
C2012C0G1H152K060AA	1,500	0.480	0.0356	10.0
C2012C0G1H222J060AA	2,200	0.480	0.0254	10.0
C2012C0G1H222J085AA	2,200	0.480	0.0577	10.0
C2012C0G1H222K060AA	2,200	0.480	0.0254	10.0
C2012C0G1H332J060AA	3,300	0.480	0.0268	10.0
C2012C0G1H332J125AA	3,300	0.480	0.0363	10.0
C2012C0G1H332K060AA	3,300	0.480	0.0268	10.0
C2012C0G1H472J060AA	4,700	0.480	0.0436	10.0
C2012C0G1H472K060AA	4,700	0.480	0.0436	10.0
C2012C0G1H682J060AA	6,800	0.480	0.0198	10.0
C2012C0G1H682K060AA	6,800	0.480	0.0198	10.0
C2012C0G1H103J060AA	10,000	0.480	0.0370	10.0
C2012C0G1H103K060AA	10,000	0.480	0.0370	10.0
C2012C0G1H153J085AA	15,000	0.480	0.0130	10.0
C2012C0G1H153K085AA	15,000	0.480	0.0130	10.0
C2012C0G1H223J125AA	22,000	0.480	0.0120	10.0
C2012C0G1H223K125AA	22,000	0.480	0.0120	10.0
C2012C0G1H333J125AA	33,000	0.480	0.0085	10.0
C2012C0G1H333K125AA	33,000	0.480	0.0085	10.0
C2012X5R0G476M125AB	47,000,000	0.480	0.0010	0.00200
C2012X5R0J225K085AA	2,200,000	0.480	0.0034	0.0450
C2012X5R0J225M085AA	2,200,000	0.480	0.0034	0.0450
C2012X5R0J685K085AB	6,800,000	0.480	0.0024	0.0140
C2012X5R0J685M085AB	6,800,000	0.480	0.0024	0.0140
C2012X5R0J106K085AB	10,000,000	0.480	0.0029	0.0100
C2012X5R0J106M085AB	10,000,000	0.480	0.0029	0.0100
C2012X5R0J156M085AB	15,000,000	0.480	0.0023	0.00600
C2012X5R0J226K125AB	22,000,000	0.480	0.0016	0.00400
C2012X5R0J226M085AB	22,000,000	0.480	0.0027	0.00400

Multilayer Ceramic Chip Capacitors

Feb. 27, 2026
Simple Model

Commercial Grade General (Up to 75V) / C2012 series (2/10)

Circuit Diagram



Circuit Parameters

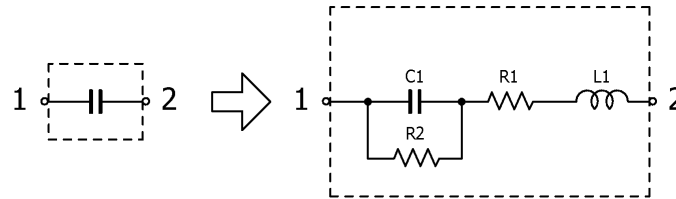
Part No.	C1[pF]	L1[nH]	R1[ohm]	R2[Gohm]
C2012X5R0J336M125AC	33,000,000	0.480	0.0012	0.00300
C2012X5R0J476M125AC	47,000,000	0.480	0.0010	0.00200
C2012X5R1A225K085AA	2,200,000	0.480	0.0051	0.0450
C2012X5R1A225M085AA	2,200,000	0.480	0.0051	0.0450
C2012X5R1A335K125AA	3,300,000	0.480	0.0042	0.0300
C2012X5R1A335M125AA	3,300,000	0.480	0.0042	0.0300
C2012X5R1A475K060AB	4,700,000	0.480	0.0048	0.0210
C2012X5R1A475K125AA	4,700,000	0.480	0.0024	0.0210
C2012X5R1A475M060AB	4,700,000	0.480	0.0048	0.0210
C2012X5R1A475M125AA	4,700,000	0.480	0.0024	0.0210
C2012X5R1A685K060AC	6,800,000	0.480	0.0053	0.0140
C2012X5R1A685K085AB	6,800,000	0.480	0.0059	0.0140
C2012X5R1A685M060AC	6,800,000	0.480	0.0053	0.0140
C2012X5R1A685M085AB	6,800,000	0.480	0.0059	0.0140
C2012X5R1A106K085AB	10,000,000	0.480	0.0029	0.0100
C2012X5R1A106M085AB	10,000,000	0.480	0.0029	0.0100
C2012X5R1A156M085AC	15,000,000	0.480	0.0023	0.00600
C2012X5R1A156M125AB	15,000,000	0.480	0.0021	0.00600
C2012X5R1A226K125AB	22,000,000	0.480	0.0016	0.00400
C2012X5R1A226M085AC	22,000,000	0.480	0.0027	0.00400
C2012X5R1A226M125AB	22,000,000	0.480	0.0016	0.00400
C2012X5R1A336M125AC	33,000,000	0.480	0.0015	0.00300
C2012X5R1A476M125AC	47,000,000	0.480	0.0024	0.00200
C2012X5R1C105K085AA	1,000,000	0.480	0.0062	0.100
C2012X5R1C105M085AA	1,000,000	0.480	0.0062	0.100
C2012X5R1C155K125AA	1,500,000	0.480	0.0061	0.0660
C2012X5R1C155M125AA	1,500,000	0.480	0.0061	0.0660
C2012X5R1C225K085AC	2,200,000	0.480	0.0051	0.0450
C2012X5R1C225K125AA	2,200,000	0.480	0.0049	0.0450
C2012X5R1C225M085AC	2,200,000	0.480	0.0051	0.0450
C2012X5R1C225M125AA	2,200,000	0.480	0.0049	0.0450
C2012X5R1C335K060AC	3,300,000	0.480	0.0114	0.0300
C2012X5R1C335K085AB	3,300,000	0.480	0.0039	0.0300
C2012X5R1C335K125AC	3,300,000	0.480	0.0030	0.0300
C2012X5R1C335M060AC	3,300,000	0.480	0.0114	0.0300
C2012X5R1C335M085AB	3,300,000	0.480	0.0039	0.0300

Multilayer Ceramic Chip Capacitors

Feb. 27, 2026
Simple Model

Commercial Grade General (Up to 75V) / C2012 series (3/10)

Circuit Diagram



Circuit Parameters

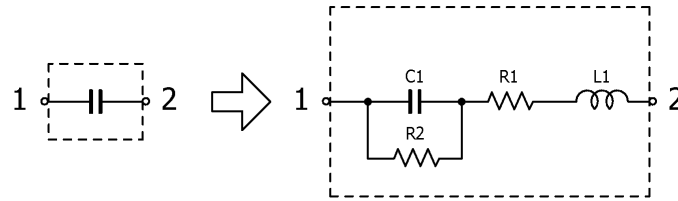
Part No.	C1[pF]	L1[nH]	R1[ohm]	R2[Gohm]
C2012X5R1C335M125AC	3,300,000	0.480	0.0030	0.0300
C2012X5R1C475K060AC	4,700,000	0.480	0.0048	0.0210
C2012X5R1C475K085AB	4,700,000	0.480	0.0023	0.0210
C2012X5R1C475K125AC	4,700,000	0.480	0.0024	0.0210
C2012X5R1C475M060AC	4,700,000	0.480	0.0048	0.0210
C2012X5R1C475M085AB	4,700,000	0.480	0.0023	0.0210
C2012X5R1C475M125AC	4,700,000	0.480	0.0024	0.0210
C2012X5R1C685K085AC	6,800,000	0.480	0.0024	0.0140
C2012X5R1C685M085AC	6,800,000	0.480	0.0024	0.0140
C2012X5R1C106K085AC	10,000,000	0.480	0.0029	0.0100
C2012X5R1C106M085AC	10,000,000	0.480	0.0029	0.0100
C2012X5R1C156M125AC	15,000,000	0.480	0.0021	0.00600
C2012X5R1C226K125AC	22,000,000	0.480	0.0016	0.00400
C2012X5R1C226M085AC	22,000,000	0.480	0.0027	0.00400
C2012X5R1C226M125AC	22,000,000	0.480	0.0016	0.00400
C2012X5R1E684K125AA	680,000	0.480	0.0124	0.735
C2012X5R1E684M125AA	680,000	0.480	0.0124	0.735
C2012X5R1E105K085AC	1,000,000	0.480	0.0073	0.100
C2012X5R1E105K125AA	1,000,000	0.480	0.0073	0.500
C2012X5R1E105M085AC	1,000,000	0.480	0.0073	0.100
C2012X5R1E105M125AA	1,000,000	0.480	0.0073	0.500
C2012X5R1E155K085AC	1,500,000	0.480	0.0057	0.0660
C2012X5R1E155K125AA	1,500,000	0.480	0.0061	0.333
C2012X5R1E155M085AC	1,500,000	0.480	0.0057	0.0660
C2012X5R1E155M125AA	1,500,000	0.480	0.0061	0.333
C2012X5R1E225K085AC	2,200,000	0.480	0.0051	0.0450
C2012X5R1E225K125AC	2,200,000	0.480	0.0049	0.0450
C2012X5R1E225M085AC	2,200,000	0.480	0.0051	0.0450
C2012X5R1E225M125AC	2,200,000	0.480	0.0049	0.0450
C2012X5R1E335K085AC	3,300,000	0.480	0.0039	0.0300
C2012X5R1E335K125AB	3,300,000	0.480	0.0037	0.151
C2012X5R1E335M085AC	3,300,000	0.480	0.0039	0.0300
C2012X5R1E335M125AB	3,300,000	0.480	0.0037	0.151
C2012X5R1E475K085AC	4,700,000	0.480	0.0023	0.0210
C2012X5R1E475K125AB	4,700,000	0.480	0.0056	0.106
C2012X5R1E475M085AC	4,700,000	0.480	0.0023	0.0210

Multilayer Ceramic Chip Capacitors

Feb. 27, 2026
Simple Model

Commercial Grade General (Up to 75V) / C2012 series (4/10)

Circuit Diagram



Circuit Parameters

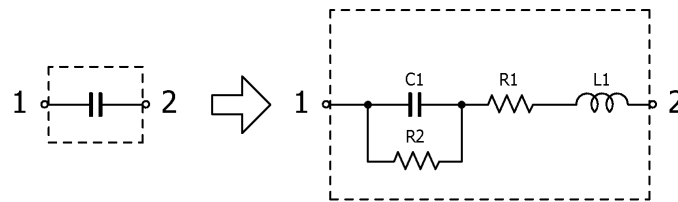
Part No.	C1[pF]	L1[nH]	R1[ohm]	R2[Gohm]
C2012X5R1E475M125AB	4,700,000	0.480	0.0056	0.106
C2012X5R1E685K125AC	6,800,000	0.480	0.0041	0.0140
C2012X5R1E685M125AC	6,800,000	0.480	0.0041	0.0140
C2012X5R1E106K085AC	10,000,000	0.480	0.0029	0.0100
C2012X5R1E106K125AB	10,000,000	0.480	0.0020	0.0500
C2012X5R1E106M085AC	10,000,000	0.480	0.0029	0.0100
C2012X5R1E106M125AB	10,000,000	0.480	0.0020	0.0500
C2012X5R1E156M125AC	15,000,000	0.480	0.0021	0.00600
C2012X5R1E226M125AC	22,000,000	0.480	0.0016	0.00400
C2012X5R1V105K085AB	1,000,000	0.480	0.0066	0.500
C2012X5R1V105M085AB	1,000,000	0.480	0.0066	0.500
C2012X5R1V155K125AB	1,500,000	0.480	0.0049	0.333
C2012X5R1V155M125AB	1,500,000	0.480	0.0049	0.333
C2012X5R1V225K085AB	2,200,000	0.480	0.0050	0.227
C2012X5R1V225K125AB	2,200,000	0.480	0.0047	0.227
C2012X5R1V225M085AB	2,200,000	0.480	0.0050	0.227
C2012X5R1V225M125AB	2,200,000	0.480	0.0047	0.227
C2012X5R1V335K125AC	3,300,000	0.480	0.0037	0.151
C2012X5R1V335M125AC	3,300,000	0.480	0.0037	0.151
C2012X5R1V475K125AC	4,700,000	0.480	0.0056	0.106
C2012X5R1V475M125AC	4,700,000	0.480	0.0056	0.106
C2012X5R1V685K125AC	6,800,000	0.480	0.0041	0.0730
C2012X5R1V685M125AC	6,800,000	0.480	0.0041	0.0730
C2012X5R1V106K085AC	10,000,000	0.480	0.0029	0.0500
C2012X5R1V106K125AC	10,000,000	0.480	0.0020	0.0500
C2012X5R1V106M085AC	10,000,000	0.480	0.0029	0.0500
C2012X5R1V106M125AC	10,000,000	0.480	0.0020	0.0500
C2012X5R1V156M125AC	15,000,000	0.480	0.0018	0.0330
C2012X5R1V226M125AC	22,000,000	0.480	0.0022	0.0220
C2012X5R1H224K125AA	220,000	0.480	0.0116	2.27
C2012X5R1H224M125AA	220,000	0.480	0.0116	2.27
C2012X5R1H334K125AA	330,000	0.480	0.0101	1.52
C2012X5R1H334M125AA	330,000	0.480	0.0101	1.52
C2012X5R1H474K125AB	470,000	0.480	0.0077	1.06
C2012X5R1H474M125AB	470,000	0.480	0.0151	1.06
C2012X5R1H684K125AB	680,000	0.480	0.0105	0.735

Multilayer Ceramic Chip Capacitors

Feb. 27, 2026
Simple Model

Commercial Grade General (Up to 75V) / C2012 series (5/10)

Circuit Diagram



Circuit Parameters

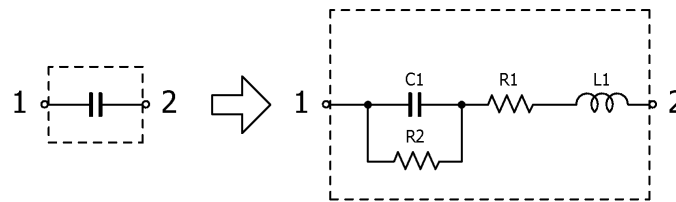
Part No.	C1[pF]	L1[nH]	R1[ohm]	R2[Gohm]
C2012X5R1H684M125AB	680,000	0.480	0.0105	0.735
C2012X5R1H105K085AB	1,000,000	0.480	0.0066	0.500
C2012X5R1H105K125AB	1,000,000	0.480	0.0053	0.500
C2012X5R1H105M085AB	1,000,000	0.480	0.0066	0.500
C2012X5R1H105M125AB	1,000,000	0.480	0.0091	0.500
C2012X5R1H155K125AB	1,500,000	0.480	0.0049	0.333
C2012X5R1H155M125AB	1,500,000	0.480	0.0049	0.333
C2012X5R1H225K085AB	2,200,000	0.480	0.0050	0.227
C2012X5R1H225K125AB	2,200,000	0.480	0.0047	0.227
C2012X5R1H225M085AB	2,200,000	0.480	0.0050	0.227
C2012X5R1H225M125AB	2,200,000	0.480	0.0047	0.227
C2012X5R1H335K125AB	3,300,000	0.480	0.0037	0.151
C2012X5R1H335M125AB	3,300,000	0.480	0.0037	0.151
C2012X5R1H475K125AB	4,700,000	0.480	0.0028	0.106
C2012X5R1H475M125AB	4,700,000	0.480	0.0028	0.106
C2012X5R1H106K125AC	10,000,000	0.480	0.0020	0.0100
C2012X6S0G156M085AC	15,000,000	0.480	0.0023	0.00600
C2012X6S0G226M085AC	22,000,000	0.480	0.0027	0.00400
C2012X6S0G336M125AC	33,000,000	0.480	0.0012	0.00300
C2012X6S0G476M125AC	47,000,000	0.480	0.0010	0.00200
C2012X6S0J475K125AB	4,700,000	0.480	0.0056	0.0210
C2012X6S0J475M125AB	4,700,000	0.480	0.0056	0.0210
C2012X6S0J685K085AB	6,800,000	0.480	0.0024	0.0140
C2012X6S0J685M085AB	6,800,000	0.480	0.0024	0.0140
C2012X6S0J106K085AC	10,000,000	0.480	0.0029	0.0100
C2012X6S0J106K125AB	10,000,000	0.480	0.0020	0.0100
C2012X6S0J106M085AC	10,000,000	0.480	0.0029	0.0100
C2012X6S0J106M125AB	10,000,000	0.480	0.0020	0.0100
C2012X6S0J156M125AB	15,000,000	0.480	0.0021	0.00600
C2012X6S0J226M085AC	22,000,000	0.480	0.0027	0.00400
C2012X6S0J226M125AB	22,000,000	0.480	0.0016	0.00400
C2012X6S1A475K085AB	4,700,000	0.480	0.0034	0.0210
C2012X6S1A475M085AB	4,700,000	0.480	0.0034	0.0210
C2012X6S1A685K085AC	6,800,000	0.480	0.0024	0.0140
C2012X6S1A685K125AB	6,800,000	0.480	0.0025	0.0140
C2012X6S1A685M085AC	6,800,000	0.480	0.0024	0.0140

Multilayer Ceramic Chip Capacitors

Feb. 27, 2026
Simple Model

Commercial Grade General (Up to 75V) / C2012 series (6/10)

Circuit Diagram



Circuit Parameters

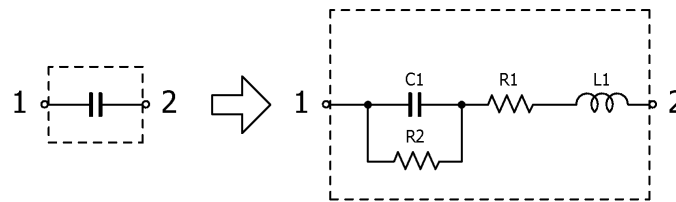
Part No.	C1[pF]	L1[nH]	R1[ohm]	R2[Gohm]
C2012X6S1A685M125AB	6,800,000	0.480	0.0025	0.0140
C2012X6S1A106K085AC	10,000,000	0.480	0.0029	0.0100
C2012X6S1A106K125AB	10,000,000	0.480	0.0020	0.0100
C2012X6S1A106M085AC	10,000,000	0.480	0.0029	0.0100
C2012X6S1A106M125AB	10,000,000	0.480	0.0020	0.0100
C2012X6S1A156M125AC	15,000,000	0.480	0.0021	0.00600
C2012X6S1A226M125AC	22,000,000	0.480	0.0016	0.00400
C2012X6S1C225K085AB	2,200,000	0.480	0.0052	0.0450
C2012X6S1C225M085AB	2,200,000	0.480	0.0052	0.0450
C2012X6S1C335K125AC	3,300,000	0.480	0.0037	0.0300
C2012X6S1C335M125AC	3,300,000	0.480	0.0037	0.0300
C2012X6S1C475K085AC	4,700,000	0.480	0.0034	0.0210
C2012X6S1C475K125AC	4,700,000	0.480	0.0056	0.0210
C2012X6S1C475M085AC	4,700,000	0.480	0.0034	0.0210
C2012X6S1C475M125AC	4,700,000	0.480	0.0056	0.0210
C2012X6S1C685K125AC	6,800,000	0.480	0.0041	0.0140
C2012X6S1C685M125AC	6,800,000	0.480	0.0041	0.0140
C2012X6S1C106K085AC	10,000,000	0.480	0.0029	0.0100
C2012X6S1C106K125AC	10,000,000	0.480	0.0020	0.0100
C2012X6S1C106M085AC	10,000,000	0.480	0.0029	0.0100
C2012X6S1C106M125AC	10,000,000	0.480	0.0020	0.0100
C2012X6S1C156M125AC	15,000,000	0.480	0.0018	0.00600
C2012X6S1C226M125AC	22,000,000	0.480	0.0022	0.0220
C2012X6S1E105K085AB	1,000,000	0.480	0.0066	0.500
C2012X6S1E105M085AB	1,000,000	0.480	0.0066	0.500
C2012X6S1E155K125AB	1,500,000	0.480	0.0061	0.333
C2012X6S1E155M125AB	1,500,000	0.480	0.0061	0.333
C2012X6S1E225K085AB	2,200,000	0.480	0.0050	0.227
C2012X6S1E225K125AC	2,200,000	0.480	0.0047	0.227
C2012X6S1E225M085AB	2,200,000	0.480	0.0050	0.227
C2012X6S1E225M125AC	2,200,000	0.480	0.0047	0.227
C2012X6S1E335K125AC	3,300,000	0.480	0.0037	0.0300
C2012X6S1E335M125AC	3,300,000	0.480	0.0037	0.0300
C2012X6S1E475K125AC	4,700,000	0.480	0.0028	0.106
C2012X6S1E475M125AC	4,700,000	0.480	0.0028	0.106
C2012X6S1V105K085AB	1,000,000	0.480	0.0066	0.500

Multilayer Ceramic Chip Capacitors

Feb. 27, 2026
Simple Model

Commercial Grade General (Up to 75V) / C2012 series (7/10)

Circuit Diagram



Circuit Parameters

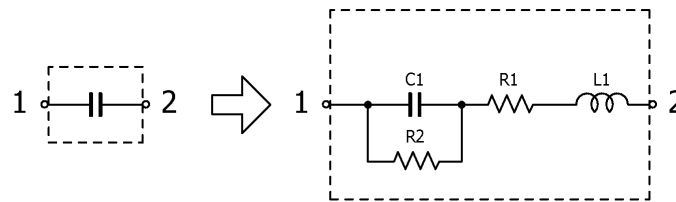
Part No.	C1[pF]	L1[nH]	R1[ohm]	R2[Gohm]
C2012X6S1V105M085AB	1,000,000	0.480	0.0066	0.500
C2012X6S1V155K125AB	1,500,000	0.480	0.0049	0.333
C2012X6S1V155M125AB	1,500,000	0.480	0.0049	0.333
C2012X6S1V225K085AB	2,200,000	0.480	0.0050	0.227
C2012X6S1V225K125AB	2,200,000	0.480	0.0047	0.227
C2012X6S1V225M085AB	2,200,000	0.480	0.0050	0.227
C2012X6S1V225M125AB	2,200,000	0.480	0.0047	0.227
C2012X6S1V335K125AB	3,300,000	0.480	0.0037	0.151
C2012X6S1V335M125AB	3,300,000	0.480	0.0037	0.151
C2012X6S1V475K125AB	4,700,000	0.480	0.0028	0.106
C2012X6S1V475M125AB	4,700,000	0.480	0.0028	0.106
C2012X6S1H474K125AB	470,000	0.480	0.0151	1.06
C2012X6S1H474M125AB	470,000	0.480	0.0151	1.06
C2012X6S1H684K125AB	680,000	0.480	0.0105	0.735
C2012X6S1H684M125AB	680,000	0.480	0.0105	0.735
C2012X6S1H105K085AB	1,000,000	0.480	0.0066	0.500
C2012X6S1H105K125AB	1,000,000	0.480	0.0091	0.500
C2012X6S1H105M085AB	1,000,000	0.480	0.0066	0.500
C2012X6S1H105M125AB	1,000,000	0.480	0.0091	0.500
C2012X6S1H155K125AB	1,500,000	0.480	0.0049	0.333
C2012X6S1H155M125AB	1,500,000	0.480	0.0049	0.333
C2012X6S1H225K085AC	2,200,000	0.480	0.0050	0.227
C2012X6S1H225K125AB	2,200,000	0.480	0.0047	0.227
C2012X6S1H225M085AC	2,200,000	0.480	0.0050	0.227
C2012X6S1H225M125AB	2,200,000	0.480	0.0047	0.227
C2012X6S1H335K125AC	3,300,000	0.480	0.0037	0.151
C2012X6S1H335M125AC	3,300,000	0.480	0.0037	0.151
C2012X6S1H475K125AC	4,700,000	0.480	0.0028	0.106
C2012X6S1H475M125AC	4,700,000	0.480	0.0028	0.106
C2012X7R0J475K085AB	4,700,000	0.480	0.0023	0.0210
C2012X7R0J475M085AB	4,700,000	0.480	0.0023	0.0210
C2012X7R0J685K125AB	6,800,000	0.480	0.0025	0.0140
C2012X7R0J685M125AB	6,800,000	0.480	0.0025	0.0140
C2012X7R0J106K125AB	10,000,000	0.480	0.0015	0.0100
C2012X7R0J106M125AB	10,000,000	0.480	0.0015	0.0100
C2012X7R1A335K125AC	3,300,000	0.480	0.0042	0.0300

Multilayer Ceramic Chip Capacitors

Feb. 27, 2026
Simple Model

Commercial Grade General (Up to 75V) / C2012 series (8/10)

Circuit Diagram



Circuit Parameters

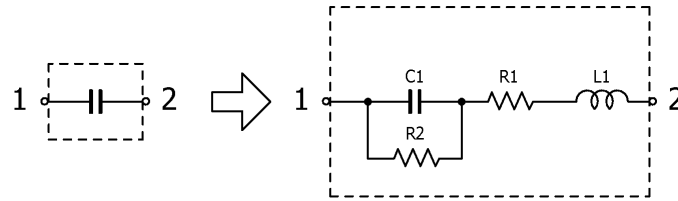
Part No.	C1[pF]	L1[nH]	R1[ohm]	R2[Gohm]
C2012X7R1A335M125AC	3,300,000	0.480	0.0042	0.0300
C2012X7R1A475K085AC	4,700,000	0.480	0.0023	0.0210
C2012X7R1A475K125AC	4,700,000	0.480	0.0024	0.0210
C2012X7R1A475M085AC	4,700,000	0.480	0.0023	0.0210
C2012X7R1A475M125AC	4,700,000	0.480	0.0024	0.0210
C2012X7R1A685K125AC	6,800,000	0.480	0.0025	0.0140
C2012X7R1A685M125AC	6,800,000	0.480	0.0025	0.0140
C2012X7R1A106K125AC	10,000,000	0.480	0.0015	0.0100
C2012X7R1A106M125AC	10,000,000	0.480	0.0015	0.0100
C2012X7R1C684K125AA	680,000	0.480	0.0074	0.147
C2012X7R1C684M125AA	680,000	0.480	0.0074	0.147
C2012X7R1C105K085AC	1,000,000	0.480	0.0069	0.100
C2012X7R1C105K125AA	1,000,000	0.480	0.0059	0.100
C2012X7R1C105M085AC	1,000,000	0.480	0.0069	0.100
C2012X7R1C105M125AA	1,000,000	0.480	0.0059	0.100
C2012X7R1C155K125AB	1,500,000	0.480	0.0061	0.0660
C2012X7R1C155M125AB	1,500,000	0.480	0.0061	0.0660
C2012X7R1C225K085AB	2,200,000	0.480	0.0050	0.0450
C2012X7R1C225K125AB	2,200,000	0.480	0.0049	0.0450
C2012X7R1C225M085AB	2,200,000	0.480	0.0050	0.0450
C2012X7R1C225M125AB	2,200,000	0.480	0.0049	0.0450
C2012X7R1C335K125AB	3,300,000	0.480	0.0037	0.0300
C2012X7R1C335M125AB	3,300,000	0.480	0.0037	0.0300
C2012X7R1C475K125AB	4,700,000	0.480	0.0028	0.0210
C2012X7R1C475M125AB	4,700,000	0.480	0.0028	0.0210
C2012X7R1E474K125AA	470,000	0.480	0.0086	1.06
C2012X7R1E474M125AA	470,000	0.480	0.0086	1.06
C2012X7R1E684K125AB	680,000	0.480	0.0124	0.735
C2012X7R1E684M125AB	680,000	0.480	0.0124	0.735
C2012X7R1E105K085AB	1,000,000	0.480	0.0066	0.500
C2012X7R1E105K125AB	1,000,000	0.480	0.0073	0.500
C2012X7R1E105M085AB	1,000,000	0.480	0.0066	0.500
C2012X7R1E105M125AB	1,000,000	0.480	0.0073	0.500
C2012X7R1E155K125AC	1,500,000	0.480	0.0061	0.333
C2012X7R1E155M125AC	1,500,000	0.480	0.0061	0.333
C2012X7R1E225K085AB	2,200,000	0.480	0.0050	0.227

Multilayer Ceramic Chip Capacitors

Feb. 27, 2026
Simple Model

Commercial Grade General (Up to 75V) / C2012 series (9/10)

Circuit Diagram



Circuit Parameters

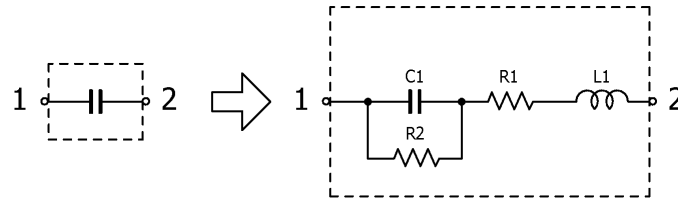
Part No.	C1[pF]	L1[nH]	R1[ohm]	R2[Gohm]
C2012X7R1E225K125AB	2,200,000	0.480	0.0047	0.227
C2012X7R1E225M085AB	2,200,000	0.480	0.0050	0.227
C2012X7R1E225M125AB	2,200,000	0.480	0.0047	0.227
C2012X7R1E335K125AB	3,300,000	0.480	0.0037	0.151
C2012X7R1E335M125AB	3,300,000	0.480	0.0037	0.151
C2012X7R1E475K125AB	4,700,000	0.480	0.0028	0.106
C2012X7R1E475M125AB	4,700,000	0.480	0.0028	0.106
C2012X7R1V474K125AB	470,000	0.480	0.0077	1.06
C2012X7R1V474M125AB	470,000	0.480	0.0151	1.06
C2012X7R1V684K125AB	680,000	0.480	0.0105	0.735
C2012X7R1V684M125AB	680,000	0.480	0.0105	0.735
C2012X7R1V105K085AB	1,000,000	0.480	0.0066	0.500
C2012X7R1V105K125AB	1,000,000	0.480	0.0053	0.500
C2012X7R1V105M085AB	1,000,000	0.480	0.0066	0.500
C2012X7R1V105M125AB	1,000,000	0.480	0.0091	0.500
C2012X7R1V155K125AB	1,500,000	0.480	0.0049	0.333
C2012X7R1V155M125AB	1,500,000	0.480	0.0049	0.333
C2012X7R1V225K085AC	2,200,000	0.480	0.0050	0.227
C2012X7R1V225K125AB	2,200,000	0.480	0.0047	0.227
C2012X7R1V225M085AC	2,200,000	0.480	0.0050	0.227
C2012X7R1V225M125AB	2,200,000	0.480	0.0047	0.227
C2012X7R1V335K125AC	3,300,000	0.480	0.0037	0.151
C2012X7R1V335M125AC	3,300,000	0.480	0.0037	0.151
C2012X7R1V475K125AC	4,700,000	0.480	0.0028	0.106
C2012X7R1V475M125AC	4,700,000	0.480	0.0028	0.106
C2012X7R1H224K125AA	220,000	0.480	0.0116	2.27
C2012X7R1H224M125AA	220,000	0.480	0.0116	2.27
C2012X7R1H334K125AA	330,000	0.480	0.0101	1.52
C2012X7R1H334M125AA	330,000	0.480	0.0101	1.52
C2012X7R1H474K125AB	470,000	0.480	0.0077	1.06
C2012X7R1H474M125AB	470,000	0.480	0.0151	1.06
C2012X7R1H684K125AB	680,000	0.480	0.0105	0.735
C2012X7R1H684M125AB	680,000	0.480	0.0105	0.735
C2012X7R1H105K085AC	1,000,000	0.480	0.0066	0.500
C2012X7R1H105K125AB	1,000,000	0.480	0.0053	0.500
C2012X7R1H105M085AC	1,000,000	0.480	0.0066	0.500

Multilayer Ceramic Chip Capacitors

Feb. 27, 2026
Simple Model

Commercial Grade General (Up to 75V) / C2012 series (10/10)

Circuit Diagram



Circuit Parameters

Part No.	C1[pF]	L1[nH]	R1[ohm]	R2[Gohm]
C2012X7R1H105M125AB	1,000,000	0.480	0.0091	0.500
C2012X7R1H155K125AC	1,500,000	0.480	0.0049	0.333
C2012X7R1H155M125AC	1,500,000	0.480	0.0049	0.333
C2012X7R1H225K125AC	2,200,000	0.480	0.0047	0.227
C2012X7R1H225M125AC	2,200,000	0.480	0.0047	0.227
C2012X7R1H475K125AC	4,700,000	0.480	0.0031	0.106
C2012X7S0G106K085AC	10,000,000	0.480	0.0029	0.0100
C2012X7S0G106M085AC	10,000,000	0.480	0.0029	0.0100
C2012X7S0G156M125AC	15,000,000	0.480	0.0018	0.00600
C2012X7S0G226M125AC	22,000,000	0.480	0.0016	0.00400
C2012X7S0J106K085AC	10,000,000	0.480	0.0029	0.0100
C2012X7S0J106M085AC	10,000,000	0.480	0.0029	0.0100
C2012X7S0J156M125AC	15,000,000	0.480	0.0018	0.00600
C2012X7S0J226M125AC	22,000,000	0.480	0.0016	0.00400
C2012X7S1A156M125AC	15,000,000	0.480	0.0018	0.00600
C2012X7S1A226M125AC	22,000,000	0.480	0.0022	0.00400
C2012X7S1C106K125AC	10,000,000	0.480	0.0027	0.0100
C2012X7S1C106M125AC	10,000,000	0.480	0.0027	0.0100
C2012X7S1E106K125AC	10,000,000	0.480	0.0020	0.0500