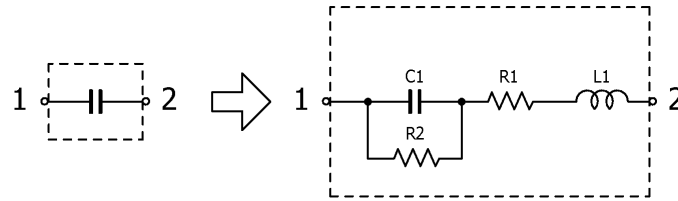


## Multilayer Ceramic Chip Capacitors

Feb. 27, 2026  
Simple Model

Commercial Grade General (Up to 75V) / C5750 series

### Circuit Diagram



### Circuit Parameters

Part No.	C1[pF]	L1[nH]	R1[ohm]	R2[Gohm]
C5750X5R0J107M280KA	100,000,000	0.650	0.0015	0.00100
C5750X5R1A686M230KA	68,000,000	0.650	0.0018	0.00100
C5750X5R1A107M280KC	100,000,000	0.650	0.0015	0.00100
C5750X5R1C336M200KA	33,000,000	0.650	0.0022	0.00300
C5750X5R1C476M230KA	47,000,000	0.650	0.0019	0.00200
C5750X5R1E226M230KA	22,000,000	0.650	0.0027	0.0220
C5750X5R1E226M250KA	22,000,000	0.650	0.0016	0.0220
C5750X5R1H106K230KA	10,000,000	0.650	0.0029	0.0500
C5750X5R1H106M230KA	10,000,000	0.650	0.0029	0.0500
C5750X7R1C226M280KA	22,000,000	0.650	0.0010	0.00400
C5750X7R1C336M200KB	33,000,000	0.650	0.0022	0.00300
C5750X7R1C476M230KB	47,000,000	0.650	0.0019	0.00200
C5750X7R1E106M200KA	10,000,000	0.650	0.0029	0.0500
C5750X7R1E156M230KA	15,000,000	0.650	0.0025	0.0330
C5750X7R1E226M250KA	22,000,000	0.650	0.0016	0.0220
C5750X7R1E476M230KB	47,000,000	0.650	0.0017	0.0100
C5750X7R1V476M230KC	47,000,000	0.650	0.0017	0.0100
C5750X7R1H475K200KA	4,700,000	0.650	0.0044	0.106
C5750X7R1H475M200KA	4,700,000	0.650	0.0044	0.106
C5750X7R1H475M280KA	4,700,000	0.650	0.0054	0.106
C5750X7R1H685K250KA	6,800,000	0.650	0.0027	0.0730
C5750X7R1H685M250KA	6,800,000	0.650	0.0027	0.0730
C5750X7R1H106K230KB	10,000,000	0.650	0.0029	0.0500
C5750X7R1H106M230KB	10,000,000	0.650	0.0029	0.0500
C5750X7R1H226M250KB	22,000,000	0.650	0.0017	0.0220