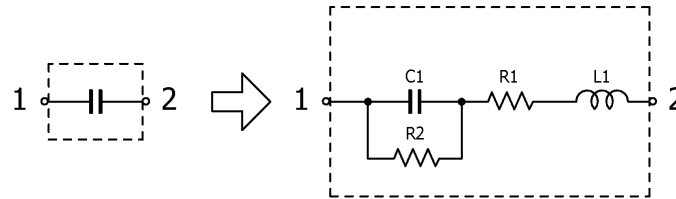


## Multilayer Ceramic Chip Capacitors

Feb. 27, 2026  
Simple Model

### Commercial Grade High Temperature Application / C2012 series (1/3)

#### Circuit Diagram



#### Circuit Parameters

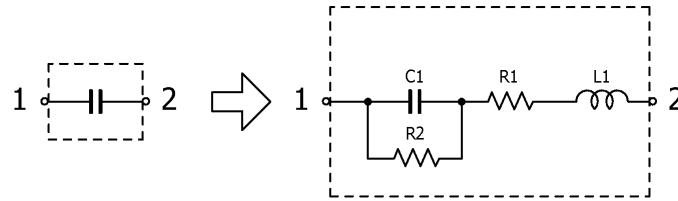
Part No.	C1[pF]	L1[nH]	R1[ohm]	R2[Gohm]
C2012NP01H332J060AA	3,300	0.480	0.0268	10.0
C2012NP01H472J060AA	4,700	0.480	0.0436	10.0
C2012NP01H682J060AA	6,800	0.480	0.0198	10.0
C2012NP01H103J060AA	10,000	0.480	0.0370	10.0
C2012NP01H153J085AA	15,000	0.480	0.0130	10.0
C2012NP01H223J125AA	22,000	0.480	0.0120	10.0
C2012NP01H333J125AA	33,000	0.480	0.0085	10.0
C2012NP02A102J060AA	1,000	0.480	0.0254	10.0
C2012NP02A122J060AA	1,200	0.480	0.0879	10.0
C2012NP02A152J060AA	1,500	0.480	0.0510	10.0
C2012NP02A182J085AA	1,800	0.480	0.0301	10.0
C2012NP02A222J085AA	2,200	0.480	0.0243	10.0
C2012NP02A272J125AA	2,700	0.480	0.0237	10.0
C2012NP02A332J125AA	3,300	0.480	0.0210	10.0
C2012NP02A392J125AA	3,900	0.480	0.0184	10.0
C2012NP02A472J125AA	4,700	0.480	0.0197	10.0
C2012NP02A562J125AA	5,600	0.480	0.0275	10.0
C2012NP02A682J125AA	6,800	0.480	0.0225	10.0
C2012NP02A822J125AA	8,200	0.480	0.0194	10.0
C2012NP02A103J125AA	10,000	0.480	0.0169	10.0
C2012NP02E332J085AA	3,300	0.480	0.0531	10.0
C2012NP02E392J125AA	3,900	0.480	0.0347	10.0
C2012NP02E472J125AA	4,700	0.480	0.0183	10.0
C2012NP02E562J125AA	5,600	0.480	0.0259	10.0
C2012NP02E682J125AA	6,800	0.480	0.0214	10.0
C2012NP02E822J125AA	8,200	0.480	0.0185	10.0
C2012NP02E103J125AA	10,000	0.480	0.0138	10.0
C2012NP02W101J060AA	100	0.480	0.1715	10.0
C2012NP02W151J060AA	150	0.480	0.1375	10.0
C2012NP02W221J060AA	220	0.480	0.1187	10.0
C2012NP02W331J060AA	330	0.480	0.0966	10.0
C2012NP02W471J060AA	470	0.480	0.0764	10.0
C2012NP02W681J060AA	680	0.480	0.0686	10.0
C2012NP02W102J060AA	1,000	0.480	0.0591	10.0
C2012NP02W122J060AA	1,200	0.480	0.0536	10.0
C2012NP02W152J085AA	1,500	0.480	0.0472	10.0

## Multilayer Ceramic Chip Capacitors

Feb. 27, 2026  
Simple Model

### Commercial Grade High Temperature Application / C2012 series (2/3)

#### Circuit Diagram



#### Circuit Parameters

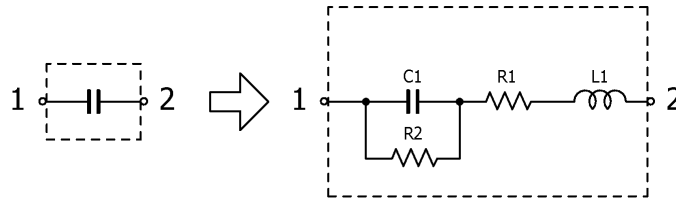
Part No.	C1[pF]	L1[nH]	R1[ohm]	R2[Gohm]
C2012NP02W182J085AA	1,800	0.480	0.0442	10.0
C2012NP02W222J085AA	2,200	0.480	0.0383	10.0
C2012NP02W272J125AA	2,700	0.480	0.0368	10.0
C2012NP02W332J125AA	3,300	0.480	0.0315	10.0
C2012NP02W392J125AA	3,900	0.480	0.0263	10.0
C2012NP02W472J125AA	4,700	0.480	0.0237	10.0
C2012NP02W562J125AA	5,600	0.480	0.0243	10.0
C2012X8L0J685K125AC	6,800,000	0.480	0.0031	0.0140
C2012X8L0J106K125AC	10,000,000	0.480	0.0027	0.0100
C2012X8L1A106K125AC	10,000,000	0.480	0.0020	0.0100
C2012X8L1C335K125AC	3,300,000	0.480	0.0046	0.0300
C2012X8L1C475K125AC	4,700,000	0.480	0.0032	0.0210
C2012X8L1E155K125AB	1,500,000	0.480	0.0054	0.333
C2012X8L1E225K125AB	2,200,000	0.480	0.0044	0.227
C2012X8L1E475K125AC	4,700,000	0.480	0.0031	0.106
C2012X8R1C684K125AB	680,000	0.480	0.0077	0.147
C2012X8R1C684M125AB	680,000	0.480	0.0077	0.147
C2012X8R1C105K125AB	1,000,000	0.480	0.0057	0.100
C2012X8R1C105M125AB	1,000,000	0.480	0.0057	0.100
C2012X8R1E154K085AA	150,000	0.480	0.0191	3.33
C2012X8R1E154M085AA	150,000	0.480	0.0191	3.33
C2012X8R1E224K125AA	220,000	0.480	0.0125	2.27
C2012X8R1E224M125AA	220,000	0.480	0.0125	2.27
C2012X8R1E334K125AA	330,000	0.480	0.0076	1.52
C2012X8R1E334M125AA	330,000	0.480	0.0076	1.52
C2012X8R1E474K125AB	470,000	0.480	0.0072	1.06
C2012X8R1E474M125AB	470,000	0.480	0.0072	1.06
C2012X8R1E684K125AC	680,000	0.480	0.0077	0.735
C2012X8R1E684M125AC	680,000	0.480	0.0077	0.735
C2012X8R1E105K125AC	1,000,000	0.480	0.0057	0.500
C2012X8R1E105M125AC	1,000,000	0.480	0.0057	0.500
C2012X8R1H683K125AA	68,000	0.480	0.0185	7.35
C2012X8R1H683M125AA	68,000	0.480	0.0185	7.35
C2012X8R1H104K125AA	100,000	0.480	0.0127	5.00
C2012X8R1H104M125AA	100,000	0.480	0.0127	5.00
C2012X8R1H154K125AB	150,000	0.480	0.0187	3.33

## Multilayer Ceramic Chip Capacitors

Feb. 27, 2026  
Simple Model

Commercial Grade High Temperature Application / C2012 series (3/3)

### Circuit Diagram



### Circuit Parameters

Part No.	C1[pF]	L1[nH]	R1[ohm]	R2[Gohm]
C2012X8R1H154M125AB	150,000	0.480	0.0187	3.33
C2012X8R1H224K125AB	220,000	0.480	0.0135	2.27
C2012X8R1H224M125AB	220,000	0.480	0.0135	2.27
C2012X8R2A223K125AA	22,000	0.480	0.0284	10.0
C2012X8R2A223M125AA	22,000	0.480	0.0284	10.0
C2012X8R2A333K125AB	33,000	0.480	0.0441	10.0
C2012X8R2A333M125AB	33,000	0.480	0.0441	10.0
C2012X8R2A473K125AB	47,000	0.480	0.0305	10.0
C2012X8R2A473M125AB	47,000	0.480	0.0305	10.0
C2012X8R2A683K125AB	68,000	0.480	0.0238	7.35
C2012X8R2A683M125AB	68,000	0.480	0.0238	7.35