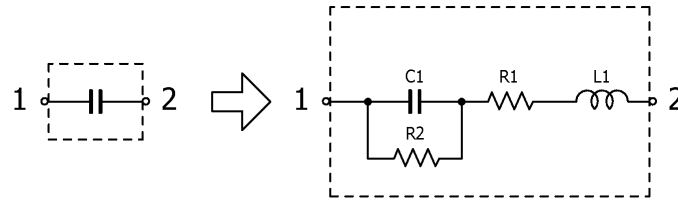


## Multilayer Ceramic Chip Capacitors

Nov. 18, 2020  
Simple Model

Automotive Grade, General (Up to 75V) / CGA5 series (1/4)

### Circuit Diagram



### Circuit Parameters

Part No.	C1[pF]	L1[nH]	R1[ohm]	R2[Gohm]
CGA5C2C0G1H472J060AA	4,700	0.750	0.0364	10.0
CGA5C2C0G1H562J060AA	5,600	0.750	0.0288	10.0
CGA5C2C0G1H682J060AA	6,800	0.750	0.0299	10.0
CGA5C2C0G1H822J060AA	8,200	0.750	0.0313	10.0
CGA5C2C0G1H103J060AA	10,000	0.750	0.0236	10.0
CGA5C2C0G1H153J060AA	15,000	0.750	0.0199	10.0
CGA5C2C0G1H223J060AA	22,000	0.750	0.0151	10.0
CGA5F2C0G1H333J085AA	33,000	0.750	0.0166	10.0
CGA5H2C0G1H473J115AA	47,000	0.750	0.0104	10.0
CGA5L2C0G1H683J160AA	68,000	0.750	0.0088	7.35
CGA5L2C0G1H104J160AA	100,000	0.750	0.0060	5.00
CGA5L2X5R1H474K160AA	470,000	0.750	0.0095	1.06
CGA5L2X5R1H474M160AA	470,000	0.750	0.0095	1.06
CGA5L2X7R1H474K160AA	470,000	0.750	0.0095	1.06
CGA5L2X7R1H474M160AA	470,000	0.750	0.0095	1.06
CGA5L2X5R1H684K160AA	680,000	0.750	0.0092	0.735
CGA5L2X5R1H684M160AA	680,000	0.750	0.0092	0.735
CGA5L2X7R1H684K160AA	680,000	0.750	0.0115	0.735
CGA5L2X7R1H684M160AA	680,000	0.750	0.0092	0.735
CGA5L2X5R1H105K160AA	1,000,000	0.750	0.0090	0.500
CGA5L2X5R1H105M160AA	1,000,000	0.750	0.0090	0.500
CGA5L3X7R1H105K160AB	1,000,000	0.750	0.0090	0.500
CGA5L3X7R1H105M160AB	1,000,000	0.750	0.0090	0.500
CGA5L2X7R1E105K160AA	1,000,000	0.750	0.0092	0.500
CGA5L2X7R1E105M160AA	1,000,000	0.750	0.0092	0.500
CGA5L3X5R1H155K160AB	1,500,000	0.750	0.0076	0.333
CGA5L3X5R1H155M160AB	1,500,000	0.750	0.0076	0.333
CGA5L3X5R1V155K160AB	1,500,000	0.750	0.0076	0.333
CGA5L3X5R1V155M160AB	1,500,000	0.750	0.0076	0.333
CGA5L2X5R1E155K160AA	1,500,000	0.750	0.0057	0.333
CGA5L2X5R1E155M160AA	1,500,000	0.750	0.0057	0.333
CGA5L3X7R1H155K160AB	1,500,000	0.750	0.0048	0.333
CGA5L3X7R1H155M160AB	1,500,000	0.750	0.0048	0.333
CGA5L3X7R1V155K160AB	1,500,000	0.750	0.0048	0.333
CGA5L3X7R1V155M160AB	1,500,000	0.750	0.0048	0.333
CGA5L2X7R1E155K160AA	1,500,000	0.750	0.0103	0.333

## Multilayer Ceramic Chip Capacitors

Nov. 18, 2020  
Simple Model

Automotive Grade, General (Up to 75V) / CGA5 series (2/4)

### Circuit Diagram



### Circuit Parameters

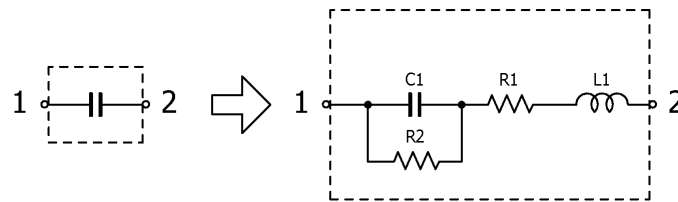
Part No.	C1[ $\mu$ F]	L1[nH]	R1[ohm]	R2[Gohm]
CGA5L2X7R1E155M160AA	1,500,000	0.750	0.0057	0.333
CGA5L3X5R1H225K160AB	2,200,000	0.750	0.0062	0.227
CGA5L3X5R1H225M160AB	2,200,000	0.750	0.0062	0.227
CGA5L3X5R1V225K160AB	2,200,000	0.750	0.0062	0.227
CGA5L3X5R1V225M160AB	2,200,000	0.750	0.0062	0.227
CGA5L2X5R1E225K160AA	2,200,000	0.750	0.0052	0.227
CGA5L2X5R1E225M160AA	2,200,000	0.750	0.0052	0.227
CGA5L3X7R1H225K160AB	2,200,000	0.750	0.0041	0.227
CGA5L3X7R1H225M160AB	2,200,000	0.750	0.0041	0.227
CGA5L3X7R1V225K160AB	2,200,000	0.750	0.0041	0.227
CGA5L3X7R1V225M160AB	2,200,000	0.750	0.0041	0.227
CGA5L2X7R1E225K160AA	2,200,000	0.750	0.0052	0.227
CGA5L2X7R1E225M160AA	2,200,000	0.750	0.0052	0.227
CGA5L3X5R1H335K160AB	3,300,000	0.750	0.0053	0.151
CGA5L3X5R1H335M160AB	3,300,000	0.750	0.0053	0.151
CGA5L3X5R1V335K160AB	3,300,000	0.750	0.0053	0.151
CGA5L3X5R1V335M160AB	3,300,000	0.750	0.0053	0.151
CGA5L2X5R1E335K160AA	3,300,000	0.750	0.0044	0.151
CGA5L2X5R1E335M160AA	3,300,000	0.750	0.0044	0.151
CGA5L3X7R1H335K160AB	3,300,000	0.750	0.0044	0.151
CGA5L3X7R1H335M160AB	3,300,000	0.750	0.0044	0.151
CGA5L1X7R1V335K160AC	3,300,000	0.750	0.0020	0.151
CGA5L1X7R1V335M160AC	3,300,000	0.750	0.0020	0.151
CGA5L1X7R1E335K160AC	3,300,000	0.750	0.0040	0.151
CGA5L1X7R1E335M160AC	3,300,000	0.750	0.0040	0.151
CGA5L3X5R1H475K160AB	4,700,000	0.750	0.0039	0.106
CGA5L3X5R1H475M160AB	4,700,000	0.750	0.0039	0.106
CGA5L3X5R1V475K160AB	4,700,000	0.750	0.0039	0.106
CGA5L3X5R1V475M160AB	4,700,000	0.750	0.0039	0.106
CGA5L2X5R1E475K160AA	4,700,000	0.750	0.0063	0.106
CGA5L2X5R1E475M160AA	4,700,000	0.750	0.0063	0.106
CGA5L2X5R1C475K160AA	4,700,000	0.750	0.0056	0.0210
CGA5L2X5R1C475M160AA	4,700,000	0.750	0.0056	0.0210
CGA5L3X7R1H475K160AB	4,700,000	0.750	0.0034	0.106
CGA5L3X7R1H475M160AB	4,700,000	0.750	0.0034	0.106
CGA5L1X7R1V475K160AC	4,700,000	0.750	0.0018	0.106

## Multilayer Ceramic Chip Capacitors

Nov. 18, 2020  
Simple Model

Automotive Grade, General (Up to 75V) / CGA5 series (3/4)

### Circuit Diagram



### Circuit Parameters

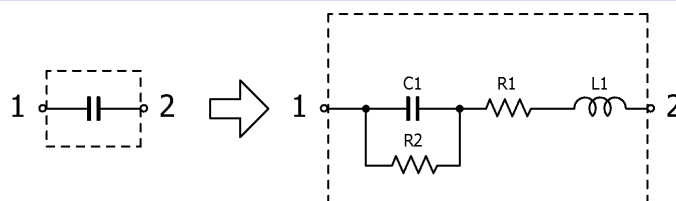
Part No.	C1[ $\mu$ F]	L1[nH]	R1[ohm]	R2[Gohm]
CGA5L1X7R1V475M160AC	4,700,000	0.750	0.0018	0.106
CGA5L1X7R1E475K160AC	4,700,000	0.750	0.0063	0.106
CGA5L1X7R1E475M160AC	4,700,000	0.750	0.0063	0.106
CGA5L3X7R1C475K160AB	4,700,000	0.750	0.0056	0.0210
CGA5L3X7R1C475M160AB	4,700,000	0.750	0.0056	0.0210
CGA5L3X5R1H685K160AB	6,800,000	0.750	0.0035	0.0730
CGA5L3X5R1H685M160AB	6,800,000	0.750	0.0035	0.0730
CGA5L3X5R1V685K160AB	6,800,000	0.750	0.0035	0.0730
CGA5L3X5R1V685M160AB	6,800,000	0.750	0.0035	0.0730
CGA5L3X5R1E685K160AB	6,800,000	0.750	0.0035	0.0730
CGA5L3X5R1E685M160AB	6,800,000	0.750	0.0035	0.0730
CGA5L2X5R1C685K160AA	6,800,000	0.750	0.0032	0.0140
CGA5L2X5R1C685M160AA	6,800,000	0.750	0.0032	0.0140
CGA5L1X7R1V685K160AC	6,800,000	0.750	0.0032	0.0730
CGA5L1X7R1V685M160AC	6,800,000	0.750	0.0032	0.0730
CGA5L1X7R1E685K160AC	6,800,000	0.750	0.0016	0.0730
CGA5L1X7R1E685M160AC	6,800,000	0.750	0.0016	0.0730
CGA5L1X7R1C685K160AC	6,800,000	0.750	0.0032	0.0140
CGA5L1X7R1C685M160AC	6,800,000	0.750	0.0032	0.0140
CGA5L3X5R1H106K160AB	10,000,000	0.750	0.0026	0.0500
CGA5L3X5R1H106M160AB	10,000,000	0.750	0.0026	0.0500
CGA5L3X5R1V106K160AB	10,000,000	0.750	0.0026	0.0500
CGA5L3X5R1V106M160AB	10,000,000	0.750	0.0026	0.0500
CGA5L3X5R1E106K160AB	10,000,000	0.750	0.0015	0.0500
CGA5L3X5R1E106M160AB	10,000,000	0.750	0.0015	0.0500
CGA5L1X5R1C106K160AC	10,000,000	0.750	0.0045	0.0100
CGA5L1X5R1C106M160AC	10,000,000	0.750	0.0045	0.0100
CGA5L1X7R1V106K160AC	10,000,000	0.750	0.0025	0.0500
CGA5L1X7R1V106M160AC	10,000,000	0.750	0.0025	0.0500
CGA5L1X7R1E106K160AC	10,000,000	0.750	0.0015	0.0500
CGA5L1X7R1E106M160AC	10,000,000	0.750	0.0015	0.0500
CGA5L1X7R1C106K160AC	10,000,000	0.750	0.0026	0.0100
CGA5L1X7R1C106M160AC	10,000,000	0.750	0.0026	0.0100
CGA5L1X5R1C156M160AC	15,000,000	0.750	0.0033	0.00600
CGA5L1X5R1C226M160AC	22,000,000	0.750	0.0022	0.00400
CGA5L1X7R0J226M160AC	22,000,000	0.750	0.0017	0.00400

## Multilayer Ceramic Chip Capacitors

Nov. 18, 2020  
Simple Model

Automotive Grade, General (Up to 75V) / CGA5 series (4/4)

### Circuit Diagram



### Circuit Parameters

Part No.	C1[pF]	L1[nH]	R1[ohm]	R2[Gohm]
CGA5L1X7T0G476M160AC	47,000,000	0.750	0.0019	0.00200