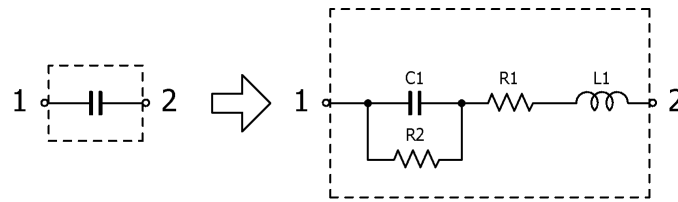


## Multilayer Ceramic Chip Capacitors

June 29, 2015  
Simple Model

Automotive Grade ( Serial Design ) / CEU4 series

### Circuit Diagram



### Circuit Parameters

Part No.	C1[pF]	L1[nH]	R1[ohm]	R2[Gohm]
CEU4J2X7R2A102K125AE	1,000	0.480	0.2671	10.0
CEU4J2X7R2A102M125AE	1,000	0.480	0.2671	10.0
CEU4J2X7R2A152K125AE	1,500	0.480	0.1998	10.0
CEU4J2X7R2A152M125AE	1,500	0.480	0.1998	10.0
CEU4J2X7R2A222K125AE	2,200	0.480	0.1638	10.0
CEU4J2X7R2A222M125AE	2,200	0.480	0.1638	10.0
CEU4J2X7R2A332K125AE	3,300	0.480	0.1194	10.0
CEU4J2X7R2A332M125AE	3,300	0.480	0.1194	10.0
CEU4J2X7R2A472K125AE	4,700	0.480	0.0955	10.0
CEU4J2X7R2A472M125AE	4,700	0.480	0.0955	10.0
CEU4J2X7R2A682K125AE	6,800	0.480	0.0781	10.0
CEU4J2X7R2A682M125AE	6,800	0.480	0.0781	10.0
CEU4J2X7R2A103K125AE	10,000	0.480	0.0483	10.0
CEU4J2X7R2A103M125AE	10,000	0.480	0.0483	10.0
CEU4J2X7R2A153K125AE	15,000	0.480	0.0616	10.0
CEU4J2X7R2A153M125AE	15,000	0.480	0.0616	10.0
CEU4J2X7R1H223K125AE	22,000	0.480	0.1563	10.0
CEU4J2X7R1H223M125AE	22,000	0.480	0.1563	10.0
CEU4J2X7R1H333K125AE	33,000	0.480	0.0490	10.0
CEU4J2X7R1H333M125AE	33,000	0.480	0.0490	10.0
CEU4J2X7R1H473K125AE	47,000	0.480	0.1322	10.0
CEU4J2X7R1H473M125AE	47,000	0.480	0.1322	10.0
CEU4J2X7R1H683K125AE	68,000	0.480	0.0367	7.35
CEU4J2X7R1H683M125AE	68,000	0.480	0.0367	7.35
CEU4J2X7R1H104K125AE	100,000	0.480	0.0452	5.00
CEU4J2X7R1H104M125AE	100,000	0.480	0.0452	5.00