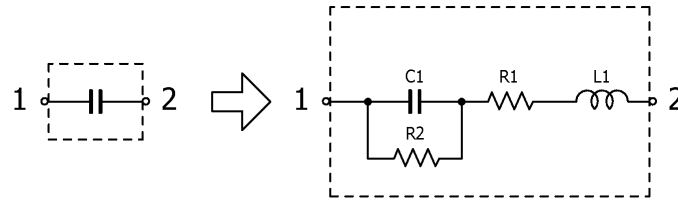


Multilayer Ceramic Chip Capacitors

July 26, 2019
Simple Model

Commercial Grade, Mid Voltage (100 to 630V) / C1005 series (1/2)

Circuit Diagram



Circuit Parameters

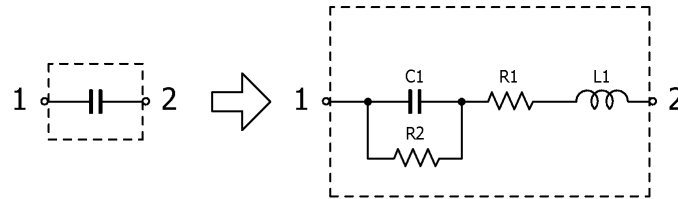
Part No.	C1[pF]	L1[nH]	R1[ohm]	R2[Gohm]
C1005C0G2A101J050BA	100	0.370	0.1104	10.0
C1005C0G2A101K050BA	100	0.370	0.1104	10.0
C1005CH2A101J050BA	100	0.370	0.1104	10.0
C1005CH2A101K050BA	100	0.370	0.1104	10.0
C1005C0G2A121J050BA	120	0.370	0.0877	10.0
C1005C0G2A121K050BA	120	0.370	0.0877	10.0
C1005CH2A121J050BA	120	0.370	0.0877	10.0
C1005CH2A121K050BA	120	0.370	0.0877	10.0
C1005C0G2A151J050BA	150	0.370	0.0978	10.0
C1005C0G2A151K050BA	150	0.370	0.0978	10.0
C1005CH2A151J050BA	150	0.370	0.0978	10.0
C1005CH2A151K050BA	150	0.370	0.0978	10.0
C1005C0G2A181J050BA	180	0.370	0.0761	10.0
C1005C0G2A181K050BA	180	0.370	0.0761	10.0
C1005CH2A181J050BA	180	0.370	0.0761	10.0
C1005CH2A181K050BA	180	0.370	0.0761	10.0
C1005C0G2A221J050BA	220	0.370	0.0687	10.0
C1005C0G2A221K050BA	220	0.370	0.0687	10.0
C1005CH2A221J050BA	220	0.370	0.0687	10.0
C1005CH2A221K050BA	220	0.370	0.0687	10.0
C1005C0G2A271J050BA	270	0.370	0.0704	10.0
C1005C0G2A271K050BA	270	0.370	0.0704	10.0
C1005CH2A271J050BA	270	0.370	0.0704	10.0
C1005CH2A271K050BA	270	0.370	0.0704	10.0
C1005C0G2A331J050BA	330	0.370	0.0667	10.0
C1005C0G2A331K050BA	330	0.370	0.0667	10.0
C1005CH2A331J050BA	330	0.370	0.0667	10.0
C1005CH2A331K050BA	330	0.370	0.0667	10.0
C1005C0G2A391J050BA	390	0.370	0.0540	10.0
C1005C0G2A391K050BA	390	0.370	0.0540	10.0
C1005CH2A391J050BA	390	0.370	0.0540	10.0
C1005CH2A391K050BA	390	0.370	0.0540	10.0
C1005C0G2A471J050BA	470	0.370	0.0506	10.0
C1005C0G2A471K050BA	470	0.370	0.0506	10.0
C1005CH2A471J050BA	470	0.370	0.0506	10.0
C1005CH2A471K050BA	470	0.370	0.0506	10.0

Multilayer Ceramic Chip Capacitors

July 26, 2019
Simple Model

Commercial Grade, Mid Voltage (100 to 630V) / C1005 series (2/2)

Circuit Diagram



Circuit Parameters

Part No.	C1[pF]	L1[nH]	R1[ohm]	R2[Gohm]
C1005C0G2A561J050BC	560	0.370	0.0635	10.0
C1005C0G2A561K050BC	560	0.370	0.0635	10.0
C1005CH2A561J050BC	560	0.370	0.0635	10.0
C1005CH2A561K050BC	560	0.370	0.0635	10.0
C1005C0G2A681J050BC	680	0.370	0.0547	10.0
C1005C0G2A681K050BC	680	0.370	0.0547	10.0
C1005CH2A681J050BC	680	0.370	0.0547	10.0
C1005CH2A681K050BC	680	0.370	0.0547	10.0
C1005C0G2A821J050BC	820	0.370	0.0500	10.0
C1005C0G2A821K050BC	820	0.370	0.0500	10.0
C1005CH2A821J050BC	820	0.370	0.0500	10.0
C1005CH2A821K050BC	820	0.370	0.0500	10.0
C1005C0G2A102J050BC	1,000	0.370	0.0394	10.0
C1005C0G2A102K050BC	1,000	0.370	0.0394	10.0
C1005CH2A102J050BC	1,000	0.370	0.0394	10.0
C1005CH2A102K050BC	1,000	0.370	0.0394	10.0
C1005X7S2A102K050BB	1,000	0.370	0.2870	10.0
C1005X7S2A102M050BB	1,000	0.370	0.2870	10.0
C1005X7S2A152K050BB	1,500	0.370	0.2422	10.0
C1005X7S2A152M050BB	1,500	0.370	0.2422	10.0
C1005X7S2A222K050BB	2,200	0.370	0.1574	10.0
C1005X7S2A222M050BB	2,200	0.370	0.1574	10.0
C1005X7S2A332K050BB	3,300	0.370	0.1427	10.0
C1005X7S2A332M050BB	3,300	0.370	0.1427	10.0
C1005X7S2A472K050BB	4,700	0.370	0.1143	10.0
C1005X7S2A472M050BB	4,700	0.370	0.1143	10.0
C1005X7S2A682K050BB	6,800	0.370	0.1286	10.0
C1005X7S2A682M050BB	6,800	0.370	0.1286	10.0
C1005X7S2A103K050BB	10,000	0.370	0.0669	10.0
C1005X7S2A103M050BB	10,000	0.370	0.0669	10.0