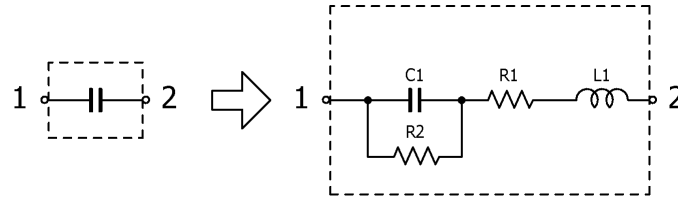


Multilayer Ceramic Chip Capacitors

June 29, 2015
Simple Model

Commercial Grade (Open Mode) / C5750 series

Circuit Diagram



Circuit Parameters

Part No.	C1[pF]	L1[nH]	R1[ohm]	R2[Gohm]
C5750X7R2J154K160KM	150,000	0.650	0.0151	3.33
C5750X7R2J224K230KM	220,000	0.650	0.0110	2.27
C5750X7R2E334K160KM	330,000	0.650	0.0217	1.52
C5750X7R2E474K230KM	470,000	0.650	0.0152	1.06
C5750X7R2E684K230KM	680,000	0.650	0.0079	0.735
C5750X7R2A684K160KM	680,000	0.650	0.0082	0.735
C5750X7R2E105K230KM	1,000,000	0.650	0.0061	0.500
C5750X7R2A105K230KM	1,000,000	0.650	0.0061	0.500
C5750X7R2A155K230KM	1,500,000	0.650	0.0075	0.333
C5750X7R1H225K160KM	2,200,000	0.650	0.0049	0.227
C5750X7R1H335K230KM	3,300,000	0.650	0.0035	0.151
C5750X7R1H475K280KM	4,700,000	0.650	0.0054	0.106
C5750X7R1E685K160KM	6,800,000	0.650	0.0035	0.0730
C5750X7R1E106K200KM	10,000,000	0.650	0.0029	0.0500
C5750X7R1E156M280KM	15,000,000	0.650	0.0025	0.0330
C5750X7R1C226M280KM	22,000,000	0.650	0.0010	0.00400